

Adventist Alpine Village

The Barry Way
Jindabyne NSW 2627

The Adventist Alpine Village (AAV) offers individual and group bookings. There is an option of self contained accommodation in chalets, four of the chalets are set up for easy access, and an option of group accommodation in dormitory style room, one room is set up for easy access. AAV also has a Dining Hall building with a meeting area, open fire area and optional catering for groups. Throughout winter dormitory style bed and breakfast accommodation is also available.

Reservations:

Phone: 02 6456 2738
Fax: 02 6456 1889
Email: info@alpinevillage.com.au
Web: www.alpinevillage.com.au
TTY: Nil

Transport:

The Adventist Alpine Village is located 3 km out of Jindabyne Township. Transport is best via private car or coach, however, if you travel to Cooma on the REX Airline, or, to Jindabyne on the Transborder bus an accessible Taxi service is available to be booked for transport to and from the Village.



Parking:

Parking at well signposted reception area is in an open circulation area. To get from the car to reception there is one small step (10cm) to a veranda and a sliding door easy to open with one hand. It is possible to call on arrival prior to entering reception to organise key and directions, if alighting from your vehicle is difficult, as it is then a drive from reception to the accommodation.



Path of Travel:

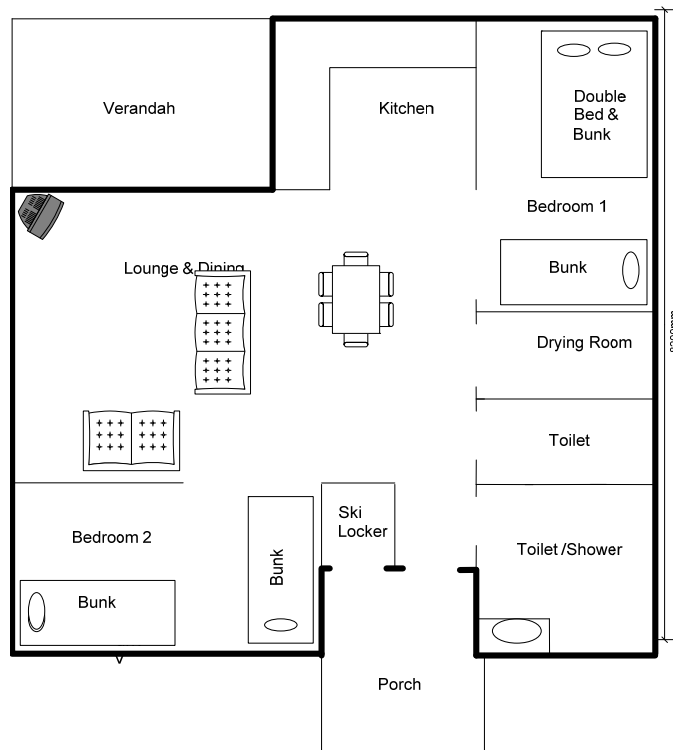
Drive from reception up the hill to the flattened out area where the chalets sit. Parking is on the right as you drive into the chalets next to the rock wall. Access to the chalets involves crossing the road approx 10m to the door.

Chalet Accommodation

Entry / Main Chalet Area

The gradient from the road to the entry platform is 9.8% there is edging on the 1.5m wooden platform which crosses a small drainage dip to the landing at the front door. The main door width is 770mm (knob style door handle with key lock, no automatic closer).

Switches are "quad" style at 1100mm high and the TV is operated by remote control. There is a Small self contained kitchen with a bench height 900mm. No knee space available at sink or stove. Microwave is in an elevated position hanging above the bench. Lounge/TV area has movable lounges to allow for increased circulation space if required.



Bedrooms

- There are 2 rooms are set up with 2 bunk beds in each room which are removable or movable on request. The main bunk is single over double bunk with a space of 800 - 1000mm beside the bed for transfer. The bottom bunks are not attached to the structure so they may be moved or raised if required. There is 270mm space under the bed.
- Bedrooms do not have doors. They have a wide entry space and curtains that may be closed for privacy. Circulation space is good the room dimensions are 4360 x 4320mm.
- If bedroom alterations are required please request when booking.

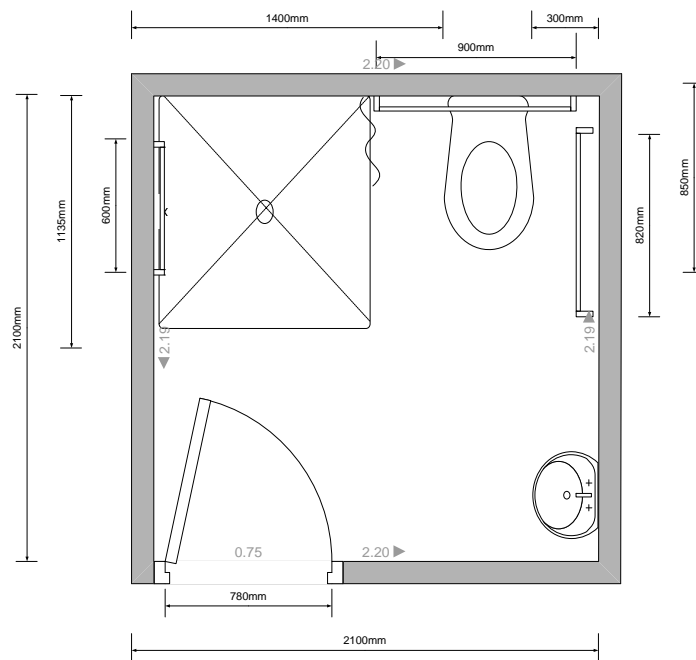


Bathroom

- The bathroom door width is 780mm, with knob handle 1000mm high and opens inwards.
- The light and fan turns on and off by sensor.
- There are no hobs for the shower area but a curtain is in place with a wet area of 930mm x 1060mm. Hand held shower is adjustable with a single mixer lever tap at a height of 1030mm. Grab rail height is 890mm.
- Portable shower seat is available on request.
- Toilet is left hand transfer with seat height 800mm, centre to side 500mm, front of bowl to rear wall 710cm, grab rail height 800mm.
- Basin height 840mm, Knee space height 700mm, depth of sink (to wall) 380mm.
- The mirror is 1090mm at its lowest point.



Adventist Alpine Village



Dining Hall Building:

- There is flat or ramped path of travel around the entire dining hall building. There is also step access to the building.
- There are 2 ramped or flat entries to the facility both have a minimum door width of 800mm but this can be widened by opening the other half of the door. There is a small lip 60-100mm high at each entry. Door handles are lever style at a height of 1100mm.
- Tables are added / removed and moved depending on the group.
- Table height 720mm, knee space 640mm.
- Self service or table service may be used depending on the requirements of the group.
- There is one accessible unisex toilet available in the dining hall building.



Other Facilities:

A large outdoor double tennis/basketball court is available for use along with an outdoor children's play gym. There is also a bush chapel a short walk up the hill.

Emergency:

Each building has a number of emergency entry/exit points. Exit from the site would be via the driveway.