

Alpine Activity Centre (AAC)

The Barry Way,
Jindabyne 2627

The AAC is a budget accommodation centre catering for groups such as Scouts but does cater for smaller groups and independent travellers. Accommodation is capable of sleeping up to 130 people; 116 in dormitory style accommodation and up to 9 people in each of two self contained cottages. One cottage, Kanangra Lodge has been made wheelchair accessible. There is also a camping ground.

The AAC arranges for groups to participate in organised activities provided by local operators. It may in the future offer activities at the AAC.

Reservations:

Phone: 61 2 6456 2433
TTY: Nil
Web: No website
Email: alpineactivitycentre@snowy.net.au

Transport:

The Alpine Activity Centre is located just off the Kosciuszko Rd, Jindabyne on The Barry Way. There's no public transport but an access cab does exist in Jindabyne (131008) otherwise private vehicle is the only option.

Parking:

Parking for AAC is accessed from The Barry Way into a large, bitumen car park, which slopes between 5.9-8.3% (1:16 – 1:12). This main parking area provides access to Reception and the dormitory accommodation. There is a separate vehicular entry from The Barry Way to Kanangra Lodge.

A dedicated accessible parking space is provided approximately 50m from Reception. A signed dedicated parking space is provided for Kanangra Lodge.



Reception entry and foyer:

A level path leads from the car park towards reception, which is house in the managers' residence. The path turns up the hill where two steps lead up to reception. The location of the reception office may change with redevelopment of a building in the car park (currently a sauna).

Available on request, a luggage storage facility is available after check out

Photo of Reception with steps to verandah



Signage, Toilets and Telephones:

Refer to information in the room.

Lifts & Corridors:

NA

Accommodation:

AAC offers dormitory accommodation with an accessible bathroom and Kanangra Lodge offering three bedrooms, two bathrooms – one access bathroom and a large living/kitchen area. A feature of this cottage is the stunning views across Lake Jindabyne.

Kanangra Lodge

A paved concrete path 1240mm wide and approximately 9m long leads from the car parking space up to the door – the gradient ranges between 5.2 - 8.7% (1:20 – 1:11).

A level landing is before the entry door offering flat access. The door is 790mm clear width with a lever handle at a height of 1080mm, keyed entry.



Photo: Kanangra Lodge & car park

Photo: Kanangra Lodge living room & kitchen



The front door leads guests through a laundry into a corridor running at 90degrees – to the right are the

bedrooms and bathrooms, to the left is the living area. The height of the light switches 1300mm, the television has remote control. There is no telephone.

The kitchen bench height is 930mm with no knee space under. Switches for kettle etc are out of reach from the seated position. A balcony runs across the front of property providing great views across Lake Jindabyne and the mountains beyond. There is a lip on exit/entry, across the sliding door running track.

An Information Book is provided giving local attractions etc.

The three bedrooms contain bunk singles and an extra single bed. Management is looking to replace the bunk bedding with queen/king (zipped singles) which will offer reasonable circulation space within the bedroom closest to the bathroom. The room dimensions are 3000 x 3450mm excluding the built-in wardrobe.

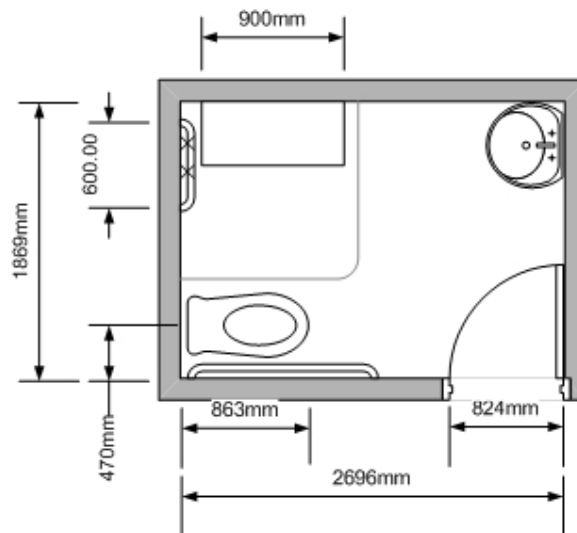
Bathroom:

The bathroom door clear width is 820mm, with lever handle 1m high and opens inwards. There is a wheel-in shower with hand held rose, grab rails height 850mm and star capstan taps 920mm. Fold down shower seat dimensions - 480mm height; 360mm depth; 900mm length. The toilet height is 470mm, centre to side wall 470mm, front of bowl to rear wall 860mm, the grab rail height 860mm. Basin height offers 800mm clearance at the front with a lever tap. Light switches are at about 900mm.

Photo: Bathroom interior



Kanangra Lodge Floor plan



Dormitory Accommodation

The Dormitory is accessed from the car park by one of two paths of entry, one is close to the dormitory entrance, but it is down a steep path which is inaccessible to many people. There is an alternative path on the way to reception the path turns left down to the side of the building. The path grade is 5.5% (1:20) over a distance of about 50m.

The Dormitory entry is up a gentle rise to double doors clear open width of 830mm (both doors 1660mm). There is a lever handle with combination lock at a height of 730mm. Note, a fire hose and extinguisher are located to the right in the foyer. A payphone is located on the left, down the hallway at a keypad height of 1100mm allowing knee space, and a sensor light operates on motion in front of the phone.

The accommodation comprises two large rooms with 25 bunk beds in each room and four smaller rooms (measuring 3m x 3.7m). These rooms are accessed via 800mm clear width doors and comprise bunk beds. However management is planning to replace these with zippable King singles (can be converted into King doubles). There is an accessible toilet at the end of a corridor. Past the dormitories, is a self-catering kitchen and dining room.



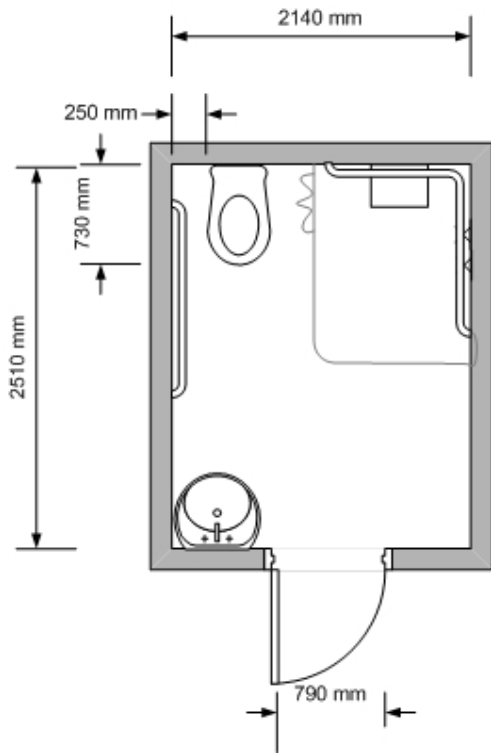
Photo: Dormitory accommodation

Bathroom:

The door offers clear space of 790mm, with a lever handle height: 1000mm into the open plan bathroom. There is a wheel-in shower with hand held rose, grab rails height 840mm and lever taps, 1250mm. Fold down shower seat dimensions - 500mm height; 270mm depth; 360mm length. The toilet height is 480mm, centre to side wall 450mm, front of bowl to rear wall 740cm, the grab rail height 830mm. Basin height offers 790mm clearance at the front with a lever tap. No mirror.

Photo: Dormitory accessible bathroom





Floor plan: Dormitory Bathroom

Dining Hall:

The dining hall offers self catered meals or catering for groups over 20. The kitchen is not designed to be wheelchair accessible. The dining hall is accessed via double doors with automatic closers, clear width 830mm one door open with handles height of 730mm. Table heights are 730mm with knee space of 670mm.

Photo: Dining area and kitchen



Emergency:

A documented emergency procedure is in each room. The alarm is audio and a Warden will seek to evacuate guests to safe refuge.

Other:

Management can arrange equipment hire, for example a hoist.