

Angala, Thredbo

Unit 1, Angala Apartments, Woodridge
Thredbo NSW 2625

Unit 1 is a single accessible apartment available for rental and holiday letting through Thredbo Real Estate services. Angala 1 Apartment is a self contained two bedroom, two bathroom unit. It is located close to Thredbo village and Friday Flat. It enjoys views of the mountains. Facilities include; TV and DVD, underfloor heating and gas fireplace, local telephone, kitchen with dishwasher, microwave, gas/electric stove & BBQ. There is also a laundry with washing machine and dryer, internal ski locker and drying room.

Reservations:

Phone: 02 6457 6387
Web: www.thredborealestate.com.au
Email: info@thredborealestate.com.au
TTY: n/a

Transport:

Transport to Thredbo may be via private car or coach, an accessible taxi service is also available to be booked for transport from Jindabyne.

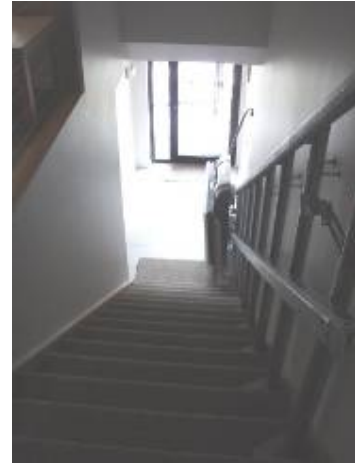
Parking:

The unit has 1 undercover parking space available located at the rear of building. The floor surface is cement and there is adequate space to unload a wheelchair.



Access:

The parking is located approximately 5 metres from door entry. There is a gradient of 6% to entry with small lip at door. There is a clear path of travel from the car position to the door of the unit. The entry door has a minimum width of 850mm with a lever handle at 1040mm height. The door is easy to open with one hand. The door opens into a tiled foyer area (height of hanging space is 950mm). The living area for the apartment is up a set of stairs which have a hand rail and a stair climber suitable for wheel chairs.



Living Area:

The living area consists of a kitchen and lounge area. The light switches are located at 1060mm height and the telephone is located off the kitchen at 1250mm height. There is underfloor heating and a gas fireplace. The laundry facilities are located on the bottom floor.

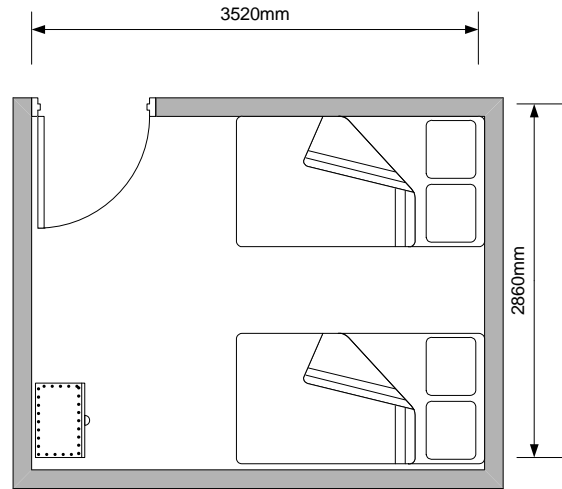
The kitchen has a bench at 910mm height and a table at 750mm height with 660mm clear knee space.



Bedroom:

The main bedroom has room dimensions 3520mm x 2860mm. The main bed is a zip King which can be converted into 2 single beds if required. The height of the bed is 570mm with 140m space underneath the bed. The floor surface in the room is carpet.

Angala 1, Thredbo



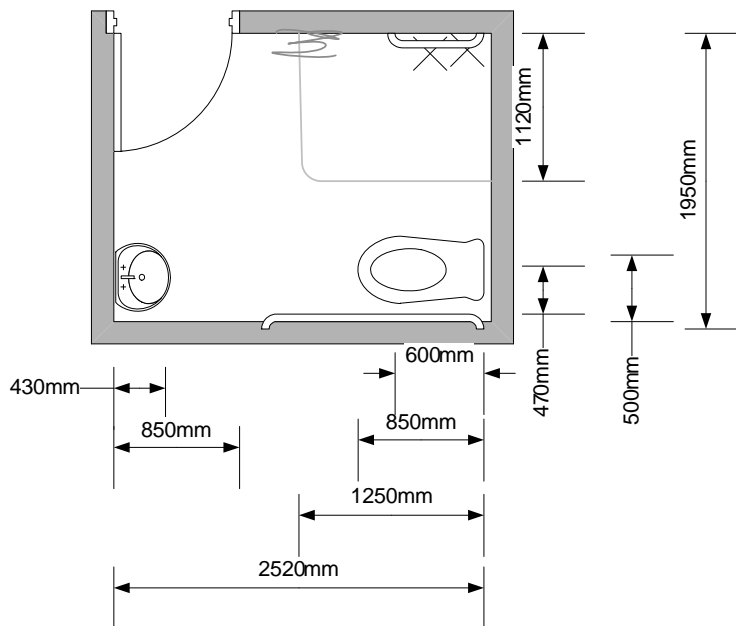
Bathroom

The bathroom entry is through a door with minimum width 850mm and a lever handle at 1030mm. The bathroom is open plan. The shower has no hobs, an adjustable hand held shower rose and a grab rail at 800mm height. There is a folding shower chair, height 480mm, length 980mm and depth 410mm. The shower has a single lever mixer tap at 1000mm height.



The toilet is left hand transfer with 290mm to near wall, 1270mm to far wall. The height of the seat is 470mm, the distance of the centreline to the wall is 470mm and the distance of the front of the seat to the rear is 850mm. There is a side grab rail which is L shaped; 770mm height to 1540mm and a rear horizontal grab rail which is 900mm height.

The wash basin is 850mm height, 430mm depth, 500mm length with knee space of 700mm. There is a single lever mixer tap at 970mm. The minimum height of the mirror is 910mm.



Emergency:

A documented emergency procedure is displayed on the door of each room. The alarm is audio and a Warden will seek to evacuate guests to safe refuge. Each building has a number of emergency entry/exit points. Exit from the site would be via Friday Drive.