

Bungarra Alpine Centre (BAC)

The Barry Way,
Jindabyne 2627

Bungarra Alpine Centre offers accommodation for between 15 to 200 people. It is suitable for all types of groups from social groups to schools seeking to take advantage of the educational activities of the Snowy Mountains. BAC can tailor the ideal program for a group such as a few lift tickets, executive leadership training to the ultimate outdoor program for school groups.

Accessible accommodation is offered in The Firmin Lodge which offers adjoining bathroom facilities for easy access. Additional features include continuous hot water, a drying room, log fire, several TVs, and dining and meeting rooms for up to 120 people. A new facility is under construction (May 2007) providing an accessible bathroom accessed by two bedrooms.

Bungarra is expanding its accommodation offerings to include a series of holiday cottages, really beautiful three bedroom homes, for the independent traveller or family. The cottage named Earth, has been made accessible.

Reservations:

Phone: 61 2 6456 2688
TTY: Nil
Web: <http://www.bungarra.com.au/>
Email: info@bungarra.com.au

Transport:

The Bungarra Alpine Centre is located off The Barry Way less than 10 minutes out of Jindabyne. There's no public transport but an access cab does exist in Jindabyne (131008) otherwise private vehicle is the only option.

Parking:

Reception is located in a building prior to The Firmin Lodge. As Bungarra is a group facility, parking for coaches is provided. A dedicated parking space is signed adjacent to the Firmin Lodge entry and there is an undercover drop of area as well. Note the general surface is a fine packed gravel.

Photo: The Firmin Lodge entry and dedicated car space



Reception entry and foyer:

Guests with disabilities are encouraged to proceed directly to Firmin Lodge.

Signage, Toilets and Telephones:

Refer to information in the room.

Lifts & Corridors:

NA

Accommodation:

Bungarra offers dormitory accommodation with an accessible bathroom in The Firmin Lodge and in a new lodge under construction when visited (May 2007). In addition, tourist accommodation named "Earth" offering three bedrooms, two bathrooms – one access bathroom and a large living/kitchen area. A feature of this cottage is the stunning view across the valley.

The Firmin Lodge - Dormitory Accommodation – Room 6

The entry to Firmin Lodge is level on paved tiles through a doorway of clear width 890mm (single door), can open to double door. A lever handle is 1160mm above the floor surface which is tiled.



There is an embedded mat and small lip at entry.

The entry foyer leads to an accommodation wing (right) and a games/activities room, dining area (left), with views across the valley.

Photo: Hallway to accommodation



A clear accessible path from entry to the building to room accommodation is via a corridor. The corridor is 1620mm wide. The clear door width to the room is 980mm with a lever handle at 1070mm. The door is fitted with an automatic closer, but its operation is light. The room contains bunk beds arranged around the room perimeter. A bathroom is located off the bedroom. Light switches are 1m from the floor and the emergency alarm is both audio (siren) and visual (strobe light).



Photo: Room interior

The bedroom measures 12.2m x 5.3mm offering ample circulation space and sleeping 10 people in five bunk beds. The bottom bunk is 470mm from floor to the top of the mattress and there is 240mm, clear space underneath.

Bathroom:

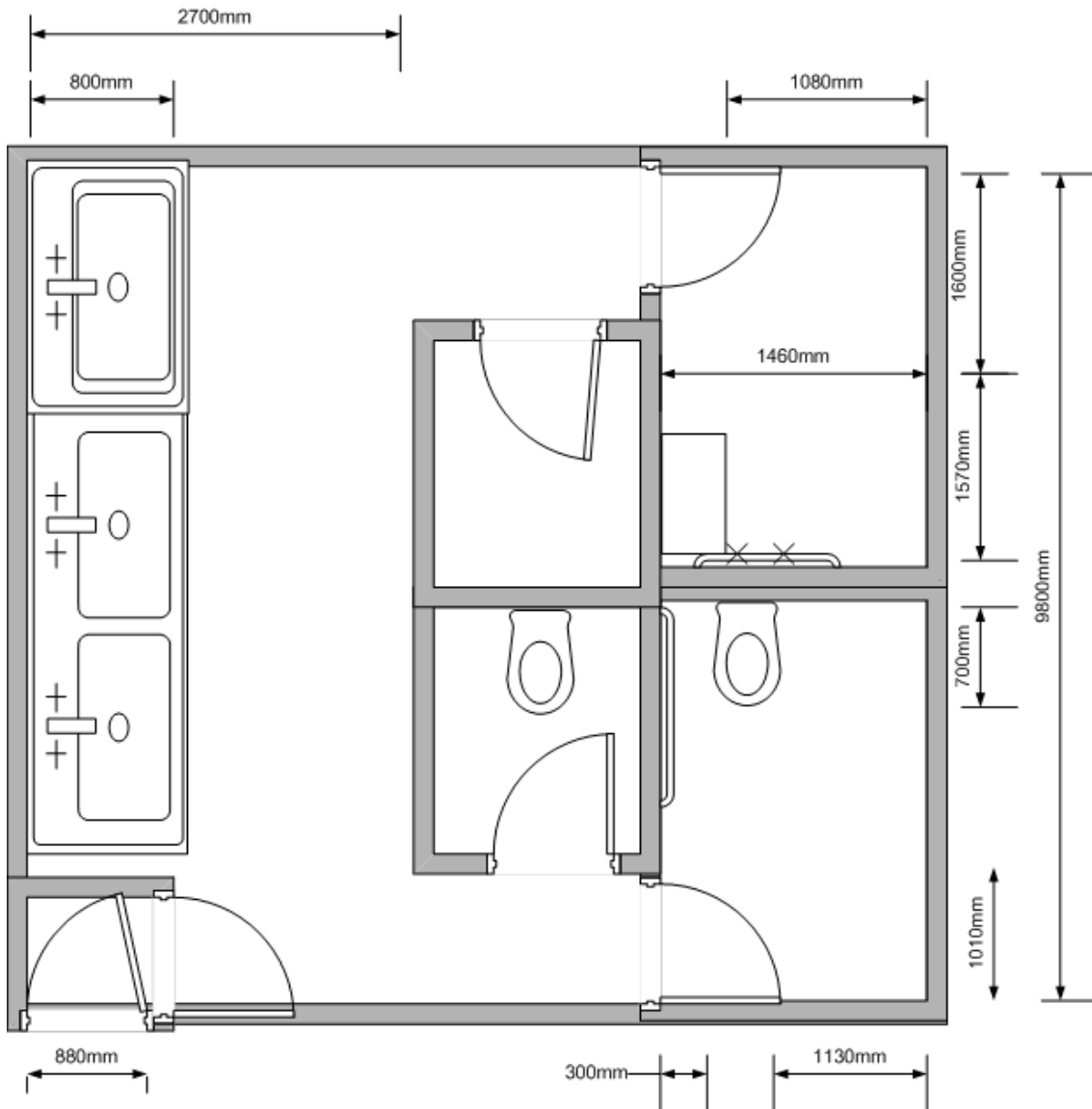
The access bathroom is an ensuite off the dormitory room. It is accessed via an airlock requiring two doors be opened but the auto closers can be adjusted to provide much easier access. The entry corridors measure 1010mm in width. The bathroom comprises two separate showers (one accessible) and two separate toilets (one accessible).

The bathroom door clear width is 880mm, with lever handle 1m high and opens inwards. The wheel-in shower with hand held rose, grab rails height 800mm and capstan taps 1080mm. Fold down shower seat dimensions 360mm depth; 900mm length. The toilet height is 450mm, centre to side wall 450mm, front of bowl to rear wall 700mm, the grab rail height 850mm. Basin height offers 770mm clearance at the front with a lever tap provided for the centre basin.

Photo : Bathroom interior



Firmin Lodge Bathroom Floorplan



Dining:

The dining hall offers catered meals for resident groups. The dining hall is accessed internally from the accommodation room by a hallway and through a games room with pool table etc. Food is served at a servery height 980mm while seating is at trestle tables with a height of 630mm. Access outside the dining hall is via a sliding door with step of about 100mm.

Photo: Dining area and kitchen



Photo: Exit from dining room & step



Emergency:

Emergency alarm is both an audio and visual system.

Other:

Management is prepared to assist facilitate a visit for example by sourcing equipment such as a hoist or staff or carer guides for people with vision impairments.

The Earth, Cottage Accommodation

The management team at Bungarra is developing tourist accommodation aimed at families in beautiful three bedroom dwellings. One such is named Earth. It is located as visitors drive into Bungarra well before the reception and group accommodation lodges. Construction Certificates have been issued for additional cottages.

Parking is on a paved level surface with a clear accessible path from the car space. The clear door width is 900mm with a door knob at a height of 1012mm. The doorway leads to a corridor opening to a lounge/living area and kitchen – offering wonderful views across the valley below. The corridor also leads to three bedrooms and two bathrooms – one accessible.

Photos: Earth parking and entry, kitchen & living



Access to the kitchen and is limited, for example there is no knee space under the sink, power switches are out of reach for a visitor using a wheelchair which restricts the ability to make a cup of tea or coffee. Sliding doors lead from the dining area to a rear patio.

There is a step of 130mm down at the rear as well as a horizontal gap required for the running track of the sliding door. This can be rectified in a number of ways while maintaining the integrity of any weather proofing. Solutions such as threshold ramps, repaving the patio and grate drains can facilitate independent ease of access to the patio.

Bedrooms:

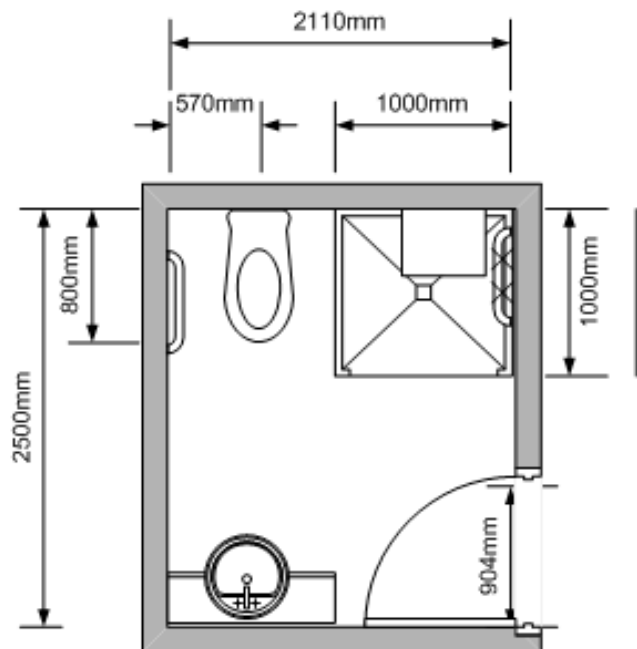
The three bedrooms contain bedding options of bunk, singles and double bed. The bedrooms all measure 4m x 2.9m. The double bed height is 530mm with 200mm clear space under. The singles are 600mm in height.



Bathroom:

The door offers clear space of 900mm, with a lever handle height: 1000mm into the bathroom. There is a wheel-in shower as the shower screen swings open creating straight roll-in/out access but there is no internal circulations space and no sideways access to the fold down shower seat. A hand held rose, grab rail height 800mm and lever taps are installed. The toilet height is 480mm, centre to side wall 570mm, front of bowl to rear wall 800mm, the grab rail height 800mm however the shower screen impedes sideways access. Basin height offers 780mm clearance at the front with a lever tap.

Photos: Accessible bathroom



Floorplan: Accessible Bathroom

