

Mad Mooses Guest House

21 Munyang Street
Jindabyne NSW 2627

Mad Mooses Guest House offers self-contained units or share accommodation centrally located, within 2 mins walk to Jindabyne. The downstairs level with kitchen, living area, three bedrooms and bathroom is accessible for wheelchair access. It can be rented as an entire self contained family unit or as single rooms with communal facilities. There is a second level with stair only access which has an open fireplace and breakfast facilities.

Reservations:

Phone: 02 6456 1108
Fax: 02 6456 1318
Email: moose@snowy.net.au
Web: www.madmooses.com/home.htm
TTY: n/a



Transport:

Transport is available via private car or coach, the Transborder Alpinexpress bus takes you to Jindabyne visitors centre, REX Airlines will fly you to Cooma airport (approximately 40mins drive). An accessible Taxi service is available to be booked for transport in and around Jindabyne.

Parking:

A designated car space is available up a relatively steep driveway at the top, right hand side, of the carpark near the building. The carpark surface is cement.

Approach and Entry:

There is a sloped path from the car park around the building to the entrance of the accommodation which is situated at the rear of the building. The path is 900mm wide at its narrowest point, gradient 5- 8 %. Reception is a separate entrance which is accessible via a flat path from the disabled parking area or via a single step from the main parking area.

Reception:

The door to reception is a large heavy wooden door 1100 mm wide with a knob handle 1000mm height. This door leads to a tiled foyer then into the reception room (door width 760 mm). The counter height is >1200mm. It is possible to call on, or prior to, arrival to request check-in at the unit and avoid going into reception. To reach the unit from reception inside the building there are three steps. To avoid the steps you would have to go back out through front entrance to reach room via the path around the building.

Accommodation:

The entry to the accommodation area is flat (door width 790mm, knob handle 100mm height with a key lock). Switches are located at 1000mm height and not within 500mm of internal corners.

Kitchen/ Dining/ Lounge Area:

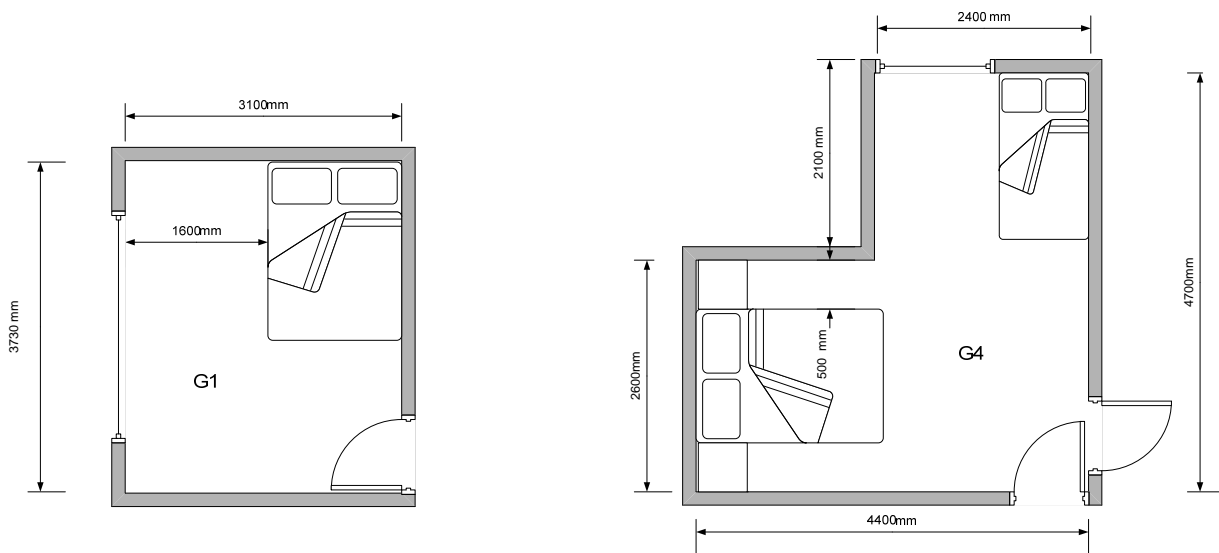
There is adequate circulation space around the area and furniture can be moved or removed if required. The floor surface in the kitchen is linoleum, the benches are 800mm height. The dining table is 780mm with 650mm clear knee space.

The floor surface in the lounge/television area is carpet. The television is operated by remote control.



Bedrooms:

There is one family room (G4) available with direct/ ensuite access to the disabled bathroom there are also 2 smaller single rooms (G1) available from which access to the bathroom is through the lounge area.



Bedroom G4 – An L shaped room with one queen size bed and one single bunk bed. The queen size bed is 580mm height and the single bottom bunk is 440mm height. There is 340 mm of

space underneath queen bed, however, support in the middle may impede the use of a hoist. Both beds have suitable stands to be raised on blocks.



Bedroom G1 – Is a rectangle room (dimensions 3100 x 3730 mm) with a single over double bunk. The height of the bottom bunk is 370mm with 150mm underneath.



Bathroom:

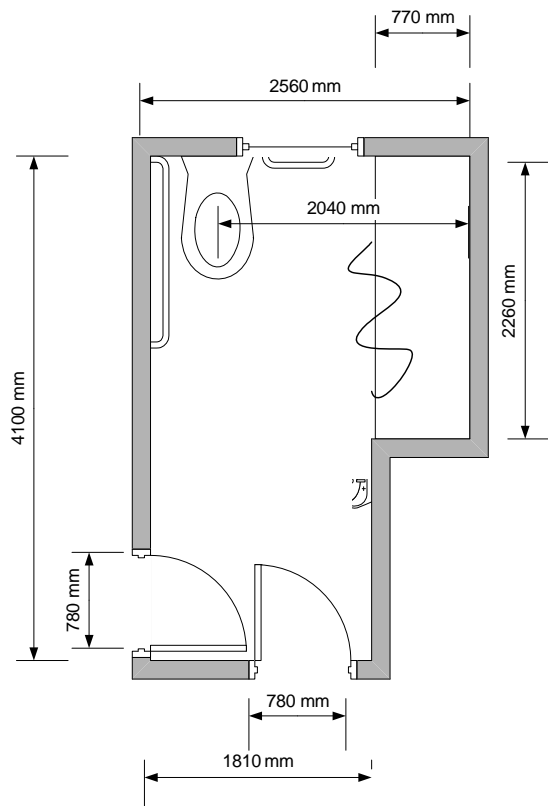
There are 2 bathrooms in the apartment one is set up as accessible and the other is not. There are 2 entrances to the disabled bathroom. One of them is accessible from G4 and the other from the main living area. The door widths are both 780 mm with Lever handles 970 mm high. A door stopper prevents full swing of the doors.

There is a wheel in shower with curtain and horizontal grab rail (780mm height). There is an adjustable hand held rose and fold down chair 1000 x 370 mm x 430 mm high. The taps are capstan (cold tap is at 930 mm and hot tap is at 1130 mm).



The toilet is right hand transfer with 520 mm from the centerline to the closest wall and 2040 mm to the far wall. The distance from the front of the seat to the rear is 820mm. There are side and rear grab rails minimum height 720mm and maximum height 1000mm, horizontal side grab rail is 800mm height.

The washbasin is 750 mm high with a knee space is 650 mm, depth 490mm. The taps are capstan at 860mm height. There are 2 mirrors, the full length mirror is 320 mm at its lowest point, the other mirror is at the washbasin.



Emergency:

A documented emergency procedure is displayed on the door of each room. The alarm is audio and a Warden will seek to evacuate guests to safe refuge. Each building has a number of emergency entry/exit points. Exit from the site would be via the driveway.