

## **Mowamba River Lodge and Fly Fishing School**

Jindabyne NSW 2627

Situated 12 kilometres out of Jindabyne Mowamba river lodge provides accommodation in ensuite rooms with balconies as well as a fly fishing school. There are 3 built dams, to replicate 3 different habitats, as well as access to the Mowamba River. Training is available in all aspects of fly fishing in small, focused classes, you can choose from 2 hour, weekend, and 3 day courses (equipment provided).

### **Reservations:**

Phone: 02 6456 1272

Mobile: 0402 315 799

Fax: (02) 6456 1272

Web: [www.flyfishing.com.au](http://www.flyfishing.com.au)

Email: [info@flyfishing.com.au](mailto:info@flyfishing.com.au)

TTY: n/a

### **Transport:**

Transport is available via private car. An accessible Taxi service is available to be booked for transport in and around Jindabyne.

### **Parking:**

There are no designated disabled parking spaces, however, parking for the accessible facilities is available within 5 metres of the ramp system. There is a drop off zone that is undercover. The ground surface in the carpark area is compacted gravel.



**Approach and Entry:**

There is a clear, well lit path of travel from the parking area to the reception area through the wide garage. Access to the general facility on the bottom level is through the garage and access to the accessible accommodation on the upper level is via a tri directional ramp, which is

approximately 40m long, 1120mm wide with a maximum gradient of 6.5% - 8%. The ramp has two handrails at 750mm and 1000mm.



**Accommodation:**

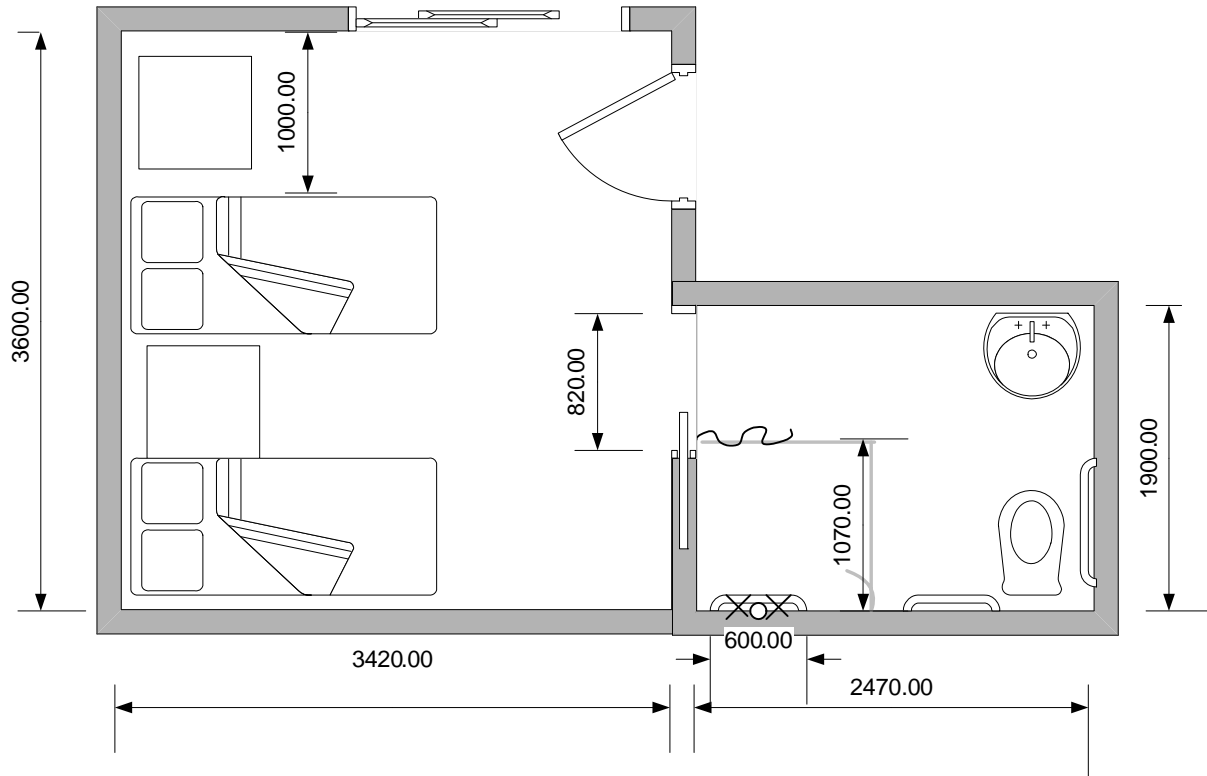
From the ramp the entry to the second floor accommodation area is a flat entry through a sliding door 820mm clear door width with a door handle 1000mm height. There is a hallway, minimum width 800mm that leads to the bedrooms, dining room, kitchen and lounge area. The floor surface is carpet.

**Kitchen/ Dining/ Lounge Area:**

There is a living/dining area on the same floor as the bedroom which has tables (height 740mm, knee space 700mm) and adequate circulation for wheelchair access. There is currently a temporary breakfast bar in place. The living area contains a lounge, TV with remote control and open fireplace.



**Bedrooms:**



Entry to the bedroom is via a sliding door with a minimum door width of 820mm. The height of the switches in the room is 970mm all of which are located more than 500mm from internal corners. The bedroom contains 2 single beds with 1000mm beside the bed closest to the door for transfer. Both beds are movable and on wheels. The height of the bed is 580mm with 100mm under the bed. The floor surface is carpet.



**Bathroom:**

The bathroom is an ensuite with access only from the bedroom. The door is a sliding door with minimum door width of 820mm, the door handle is on the inside of the door at 1000mm height. There is adequate circulation space within the bathroom area. The washbasin in the bathroom is pedestal style 800mm height with a 390mm depth, the taps are star capstan style. The mirror is 900mm at its lowest point.



Entry into the shower is flat and free of hobs or steps with a hanging shower curtain. There is a horizontal grabrail in the shower which is 800mm height and 600 long. The shower has an adjustable handheld shower rose with star capstan taps 780mm height. There is a free standing shower chair available for use.

The toilet is right hand transfer with 1250mm to the wall. The height of the seat is 440mm and the distance from the midline to the nearest wall is 450mm. The distance of the front of the seat from the rear is 850mm. There is an L-shaped side grabrail minimum height 820mm. There is also a rear horizontal grabrail with a minimum height of 820mm.



**Other Facilities:**

Mowamba River Lodge and Fly Fishing School also has dam fishing and fishing ponds. The access to the dam area from the accommodation is via the long ramp to the carpark area, then travel down the grass (crossfall on slope 9% and pathways along grass at steepest is 20%). There is flat access right up to dam.



**Emergency:**

A documented emergency procedure is displayed on the door of each room. The alarm is audio and a Warden will seek to evacuate guests to safe refuge. Each building has a number of emergency entry/exit points. Exit from the site would be via the driveway.