

The Ski Inn

9 Nettin Circuit
Jindabyne NSW 2627

The Ski Inn is a two-storey motel with two, new purpose built accessible, units on the ground floor. There is a large lounge and dining room on top floor with views over Lake Jindabyne. Breakfast is included in all packages, dinner inclusion in packages is optional. Wheel chair access to lounge and dining areas is available by a key operated lift from ground floor units.

Reservations:

Phone: 02 6456 2918
Fax: 02 6456 1545
Web: www.skiinn.com.au
Email: info@skiinn.com.au
TTY: n/a



Transport:

Transport is available via private car. An accessible taxi service is available to be booked for transport in and around Jindabyne.

Parking:

There is one designated accessible parking space approximately 20m from the entrance. The driveway continues to the entrance providing a flat area for set down if required. Call reception on arrival if assistance with luggage handling is needed. The parking area surface is cement.

Approach and Entry:

The approach from the parking area is flat from car, then a slight slope down the driveway to the entrance. The gradient of the slope ranges 2 - 7%. There is an upwards slope from the set down area to the door which is maximum 5% gradient. There is minimal lighting in the parking area at night.

The entry is through a double door airlock. Entry through the initial door is flat, the minimum door width is 800mm and there are 2 pull handles one at 830mm and the other at 1140mm height. The second door is a double door with a knob handle, it has slight upwards slope. Both doors have automatic door closers. There is adequate circulation space in the entry area.



Reception:

The reception is on the second floor up a set of 18 stairs. There is a lift available on request, however, it is key operated and therefore requires a staff member for operation. It is best to call on or before arrival to arrange entry and check-in. The reception counter is 1040mm height. The reception area and directions to reception are clearly signed. Reception is located in large space with the dining and lounge room, therefore, there are some potential hazards of tables, lounges, pot plants.



Accommodation Rooms:

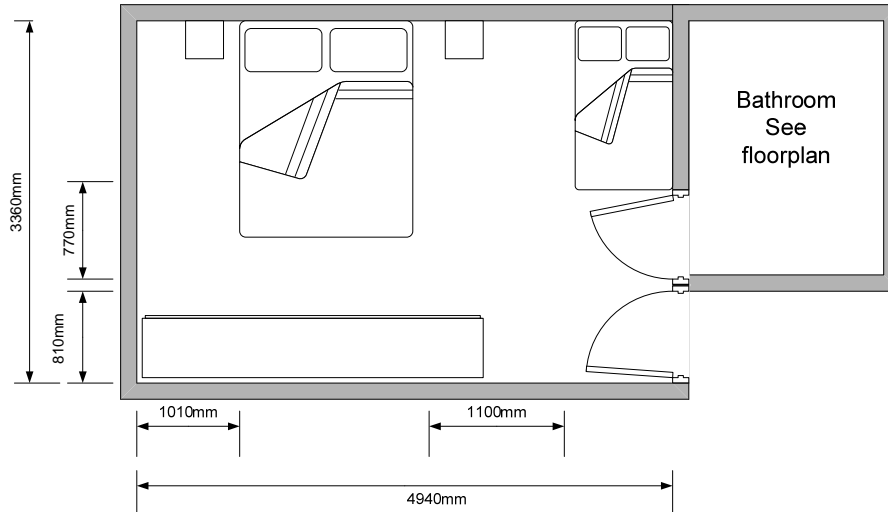
There are 2 accessible units on the ground floor. There is a corridor from the entry to the room which has a minimum width of 1100mm. The accessible rooms are both located at the end of the corridor. Both rooms have the same set up.

The door to the room is inwards opening with a minimum door width of 810mm. The door has a lever handle at 1030mm height and it is easy to open with one hand. The light switches in the room are at 1090mm height and the switches are all located greater than 500mm from internal corners. The rooms are spacious with adequate circulation space and a carpeted floor. The main bed in the room is a zip king bed that can be separated if required. The height of the bed is 520mm and it is on wheels with no space underneath. There is also a bunk bed in the room, the height of the bottom bunk is 590mm with 320mm space underneath and 500mm space to the top bunk, the top bunk cannot be removed.



The Ski Inn

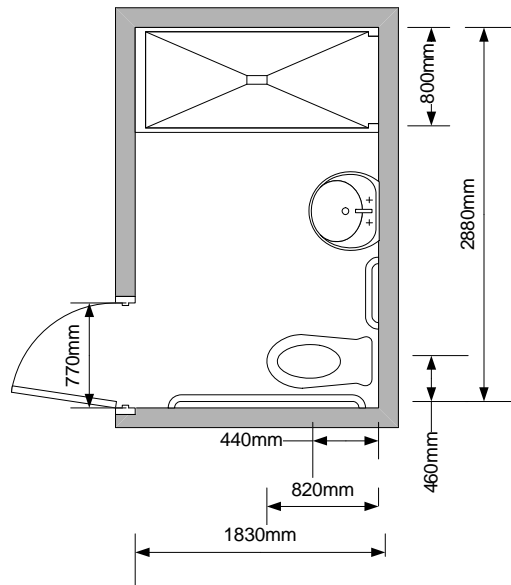
The room also has tea and coffee making facilities, a small bar fridge and a television. The height of the bench is 790mm with only 370mm knee space.



The door into the bathroom is outwards opening with no automatic door closer, a lever handle at 1040mm and 770mm minimum width. There are no hobs or steps into the shower, however, there is a track for the sliding door (door width 810mm). The shower has a hand held shower rose with star capstan taps at 1030mm height. There is a fold down shower chair (dimensions 600mm long, 350mm wide, 470mm high). There are no grabrails in the shower.

The toilet is left hand transfer. The height of the seat is 450mm, there is 460mm from the centreline to the nearest wall and there is 820mm from the front of the seat to the rear. There is a side grab rail horizontal grab to diagonal 810mm minimum height to 1150mm maximum height. There is also a rear grab rail 810mm height. The wash basin is 830mm height with 680mm knee space and depth from wall is 440mm. The washbasin has lever taps 850mm height. The mirror is 1000mm at its lowest point.





Dining/ Lounge Area:

The dining and lounge area's are located on the second floor which is up 18 stairs or accessible via key operated lift on request. This floor is open plan with a balcony that has views over lake Jindabyne. The balcony has a sliding door which has no steps however, it does have a floor track.

Breakfast and dinners are buffet style and can be include in accommodation packages. The height of the buffet/service counter is 1020mm. There is adequate circulation space between the tables. The tables are pedestal style table height is 710mm with knee space of 690mm. The lighting in the dining area is bright.

The Ski Inn



Emergency:

A documented emergency procedure is displayed on the door of each room. There is an audible alarm which will sound in the case of emergency and a warden will seek to evacuate guests to safe refuge. Exit from the site would be via the driveway.

