

Snowline Holiday Park

Kosciuszko Rd
Jindabyne NSW 2627

The Snowline Holiday Park is an accommodation centre situated 2 kilometres from the Jindabyne town centre. The holiday park comprises of 10 various styles of villas from the luxurious to the economical. All of the villas are modern, well-maintained set in the park's landscaped gardens. The park is also a venue for caravan, backpacker and camping style accommodation. There is one villa which is semi accessible.

Reservations:

Phone: 02 6456 2099
Fax: 1800 248 148
Web: www.snowline.com.au
Email: snowline@bestonparks.com.au
TTY: n/a



Transport:

Transport is available via private car. An accessible Taxi service is available to be booked for transport in and around Jindabyne.

Parking:

At reception there are no designated accessible parking spaces, however, there is ample parking within 10-50 metres of the entry. The parking area ranges from flat to sloping (gradient <7%). The signage to indicate reception is clear and easy to follow once you are off the road. Assistance with luggage handling is available on request.

Reception:

The approach to from the carpark to reception is over bitumen which is sloping and uneven in parts. There are 2 steps at the front door one is 140mm and the second step at door entry is 120mm, these steps have no handrail. The clear door width to reception is 840mm. The wooden door opens inwards with a knob style door handle at 780mm height. Once inside reception there is adequate circulation space and the floor surface is tiled.

A lowered counter is available at a height of 730mm with 680mm height/160mm depth clear knee space. The office area has good lighting.



Alpine Villa:

Approach and Entry:

From reception you would drive through a boom gate and around the park to arrive at the Alpine Villa. There is adequate parking directly out the front of the villa. There is a ramp to the entry which is approximately 3000mm long, 1330mm width and 23% gradient. The ramp has a side rail which is 980mm height. The ramp leads to a balcony which is flat with some furniture which is movable but could be difficult to negotiate alone. The balcony then leads to a sliding door. The sliding door has a width of 740mm when open and there is a small lip (i.e. the track) on the floor. The door is keyed entry with the lock and handle at 1080mm height.



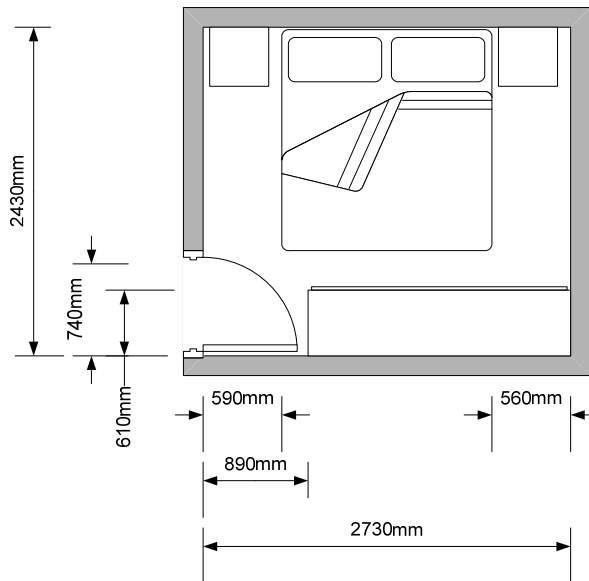
Dining/ Lounge Area:

The villa is single level with adequate circulation space and tiled floor surface. The switches around the villa are located at 1300mm height, the airconditioning and TV/DVD are operated via remote control. The switches are all located more than 500mm from internal corners. The kitchen bench is 910mm height with no knee space. The kitchen table is pedestal style with 770mm with 740mm knee space. The furniture in both the kitchen and the lounge area are movable.



Bedroom:

The main bedroom has a door width of 740mm. The floor surface in the room is carpet. The room has one queen size bed (height 650mm; space under 120mm) which is on wheels. Circulation space around the room is limited with 570mm on each side of the main bed only available for transfer.

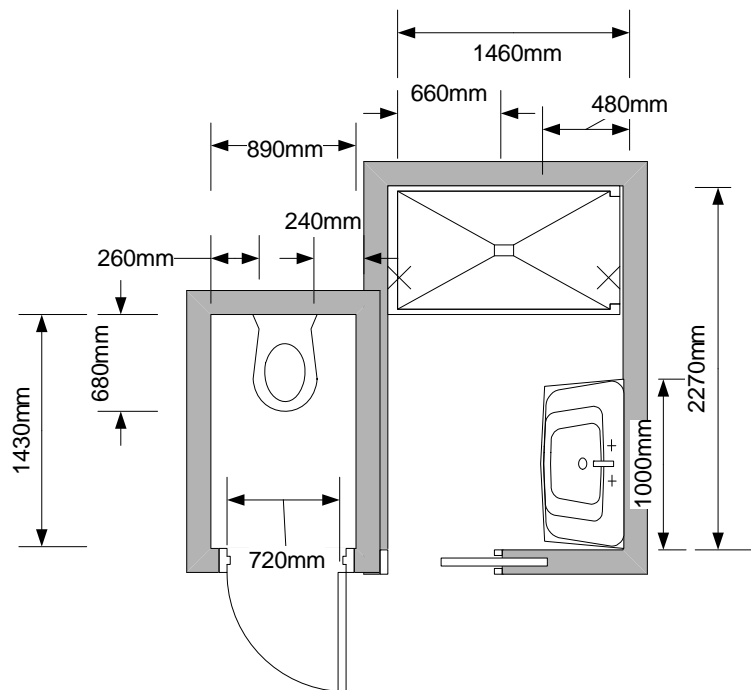


Bathroom:

The bathroom consists of a shower and a washbasin and the toilet is located separately. The door to the bathroom is a sliding door which is 660mm wide. The circulation space within the bathroom area is 1400mm x 1460mm. The washbasin is in the bathroom area with a height of 850mm, 480mm depth and 1000mm length. The washbasin has star capstan taps at 950mm height. The mirror is above the washbasin at 1050mm minimum height.

The shower has a glass door which opens outwards. There is a lip to negotiate to enter the shower. Circulation space within the shower area is 840mm x 1460mm. There are no grab rails in the shower. The shower has 2 fixed shower roses with star capstan taps at 1050mm and 1250mm height. There is no shower chair in the shower however the plastic furniture on the balcony may work as a substitute.

The door to the toilet is an outwards opening door minimum width 720mm with a knob handle at 1000mm height. The toilet is front transfer with limited space beside the toilet (i.e. 260mm on the left and 240mm on the right). The toilet has 680mm from the front of the seat to the rear.



Games, Lounge and TV Room:

Down the road from the villa there is a building which contains; 1 room with lounges and fireplace, 1 room with lounges and TV, 1 games room with pool table, air hockey table, pin ball machines etc. This area has two entrances, one entry through amenities block (15 stairs), the other entrance from rear of block is a ramped entry. The doors to this building are push doors on entry and pull doors on exit (pull handle 1250mm height), the minimum door width is 800mm.

Snowline Holiday Park



Amenities Block:

The amenities block is on the bottom floor of the games, lounge and tv room building. The block has a flat entrance. There is no accessible bathroom in amenities block, however, there is a comprehensive family/children bathroom available which include change facilities and a bath.





Emergency:

A documented emergency procedure is displayed on the door of each room. There is an audible alarm which will sound in the case of emergency and a warden will seek to evacuate guests to safe refuge. Exit from the site would be via the driveway.

Outdoor Activities:

There is a tennis court available. The pathway leading up to tennis court has a large gutter at beginning of path. Length of path is approximately 20m with a gradient ranging from 4.5-13%. There are two steps to access tennis court. There is a gazebo located approximately 10m from the tennis court. There are two steps to gain access to the gazebo.



Snowline Holiday Park

Boat hire is also available on site. Dingy boats, half cabin boats, open boats, canoes, paddle boats are available for hire. The boat hire shed is accessible via the road (which has some speed humps). On approaching boat shed, the surface becomes more uneven and rocky. There are 2 options for launching the boats either from a platform or from the beach.

