

Snowy Mountains Backpackers (SMB)

7-8 Gippsland St
Jindabyne NSW 2627

The Snowy Mountains Backpackers provides budget hostel style accommodation with 50 beds in single, double, dormitory & family rooms and it has communal cooking facilities. There is a stair climber entrance and one accessible bedroom with an accessible bathroom next door.

Reservations:

Phone: 1800 333 468
Fax: 02 6456 1511
Email: backpack@snowy.net.au
Web: www.snowybackpackers.com.au
TTY: n/a

Transport:

Transport is available via private car or coach, the Transborder Alpinexpress bus takes you to Jindabyne visitors centre where there is a good path of travel (approx. 200m) to the Backpackers. If you travel to Cooma on the REX Airline an accessible taxi service is available to be booked for transport.



Parking:

There is a designated, clearly sign posted parking space on the road approximately 40m from the entrance. Follow the road 3m towards the crossing to find the curb ramp then the path of travel along the sidewalk is clear with a short section of 10m which has a crossfall of 13% to move between the sidewalk tables and a café (width >1m) (see picture).



Entry:

There is a flat entry from the sidewalk into a small arcade through 2 glass doors and an airlock (the doors are typically chocked open during the day). Once in the arcade the first door on the left is reception which is a double glass door 1700mm wide door handles 920mm high.

Snowy Mountains Backpackers

Reception:

The reception and internet access area contains adequate circulation space on a carpeted floor. The reception counter is 920mm high with clear signage and good lighting. There is also a lounge and coffee table set up in the reception area.



Accommodation:

From reception the path of travel to the accommodation is to exit building back onto the footpath, walk back past café and back in another entrance to access rooms. The accommodation entrance has one glass door which opens outwards with a lever handle (920mm height) and a key lock. One 5cm step leads to flat area before large flight of 18 stairs. There is a stair climber available. Enquire at reception to use.



Communal Kitchen/ Dining/ Lounge Area:

Once up the stairs there is a large flat communal lounge, dining and kitchen area which has a tiled floor, with some floor mats. There is adequate circulation space. However, circulation space around the dining area may be limited when all the chairs are down. The

Snowy Mountains Backpackers

bench in the kitchen area is 900mm height. There is a communal television in the lounge area which has a remote control.



Bedrooms:

Once in main communal area there is a flat entry into the bedrooms. Entry to the room is through an inwards opening door (width 770mm) with a knob handle and swipe card lock and an automatic door closer. The light switches in the room are 1100mm height and all switches, heater and power outlets are accessible (i.e. not within 500mm of internal corners of the room). The height of hanging space in the room is 1700mm. The floor surface in the room is carpet and there is adequate circulation space around the room.

The room contains 2 single over double bunk beds, both of which could be easily moved around room to suit transfers. The height of the bottom bunk is 500mm, the top bunk can be removed. The bed can be raised on blocks if necessary. There is adequate space under the bed (250mm) for a hoist if required.



Snowy Mountains Backpackers

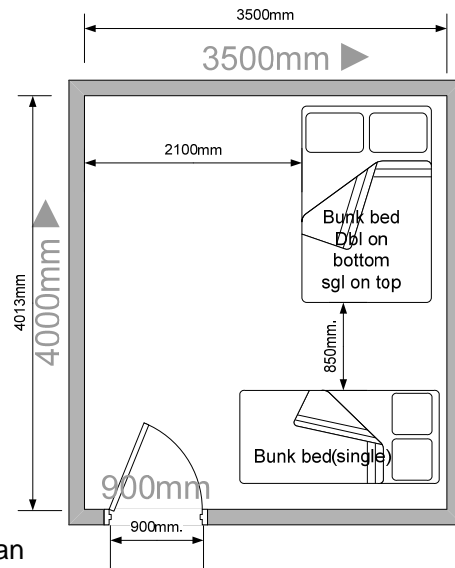


Figure 1. Bedroom Floor Plan

Bathroom:

The bathroom is situated next door to the bedroom. Access to the bathroom is through a door (780mm width) with a knob handle (1000mm height) which open inwards with no automatic door closer. There is a small 20mm lip at the entry to the bathroom. There is adequate circulation space in the bathroom (see floor plan) and a full length mirror in the bathroom.

There is a wheel-in shower with hand held adjustable rose, the taps are star capstan (900mm height). A drop down shower seat is provided. The toilet requires left hand transfer, it is at a height of 430mm, centre to side wall 450mm, front of bowl to rear wall 840mm. The grab rail is horizontal to diagonal at a height of 820mm up to 1320mm at its highest point. The washbasin is an 810mm high pedestal washbasin with ample knee space and a single lever tap (mixer style) 850mm height.



Snowy Mountains Backpackers

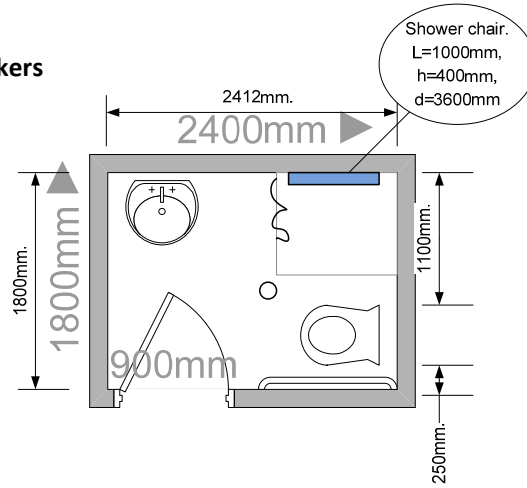


Figure 2. Bathroom Floor Plan

Other Facilities:

Also available at the Snowy Mountains Backpackers you will find Ski & Snowboard Hire, Massage & Therapy, Internet access, Laundry, Secure ski and luggage storage, 24 hour security access and Café Su Su.

Emergency:

A documented emergency procedure is displayed on the door of each room. The alarm is audio and a Warden will seek to evacuate guests to safe refuge. Each building has a number of emergency entry/exit points.