

The Station Resort

8228 Snowy River Way
Jindabyne NSW 2627

The Station Resort is a 1300 bed resort located 5 km south of Jindabyne. There are 4 purpose-built wheelchair accessible rooms that are a short distance from the central resort complex that includes eating and entertainment facilities.

Reservations:

Phone: 02 6451 4800

Phone: 1300 369 909

Fax: 02 6456 2544

Web: <http://www.perisherblue.com.au/winter/accom/stationresort.html>

Email: station@perisher.com.au

TTY: n/a

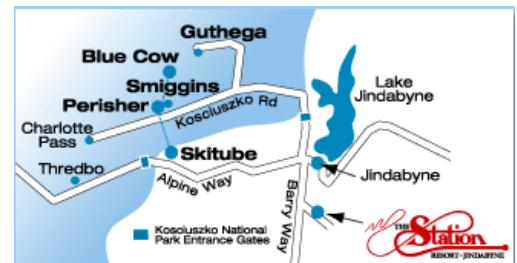
Transport:

Transport is available via private car. An accessible taxi service is available to be booked for transport in and around Jindabyne.

Reception

Parking:

There are no designated accessible car spaces. To access reception people with access needs can park the car at the curb in front of the reception building. There is also a large parking area within 50 metres of the reception building, however, the path of travel from the parking lot to reception requires the negotiation of 3 steps over a small bridge with the option to go back around the road which is approximately 300m around.



Approach and Entry:

The entrance and reception area is well sign posted and well lit. The path of travel from the curb parking area to the reception area is approximately 5 metres via a paved path with a slight incline. The path leads to the reception entry which has one step (100mm height) and a double glass push/pull door that opens inwards. The door is heavy with a handle at 1000mm height. If negotiation of the step into reception is difficult, prior arrangements can be made either when booking and/or by calling on arrival.



Reception office:

There is adequate circulation space within the reception office and the floor surface is carpet. The height of the counter is 930mm. The office has good lighting and clear signage.

Accommodation

There are 4 similar rooms that are designed to be accessible. These are rooms 140-143. The distance from reception to the accommodation is approximately 500m. Access is best by vehicle. There is no designated accessible parking space, however, there is adequate parallel parking on a cement area that has a slight cross fall. The parking area is approximately 50m from the room. Access to the accommodation is via a concrete path (1140 mm wide) that leads to a ramp (9% gradient) with handrails (top rail is at 900mm and bottom rail is 630mm height). The concrete paths lead to an area of timber decking.



Entry to the accommodation is through a glass sliding door and screen (width 830mm). The door has a key lock at 1030mm height. There are slightly raised sliding door tracks to negotiate on entry. On entry the floor surface is carpet and there is adequate circulation space around the room. The switches are located at 860mm height and, all except one power point, are located more than 500mm from the internal corners.

The main room contains 4 beds and wardrobes, tea and coffee making facilities, a table and a television. The furniture in the room is moveable. There is a bathroom within the accommodation just off the main room. There is a sliding door on the opposite end of the room that leads to a small deck which has a step down to the grassed area.

The hanging space is in the wardrobes at 1250mm height. The tea and coffee making facilities are available on top of a mini fridge at 700mm. The table is on the other side of the room to the tea and coffee area. It is a round, pedestal style table 700mm height with 670mm clear knee space.



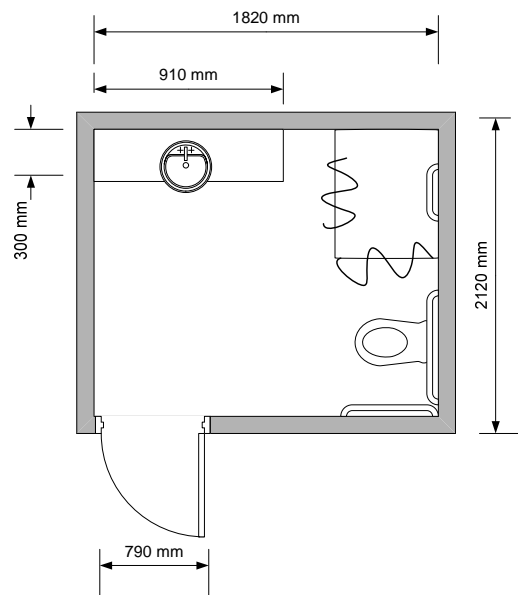
There is space available on both sides of the main, double bed for transfer. The bed is on wheels. The height of the bed is 490mm, with 70mm under the bed.

Bathroom:

The door is 790 mm wide with lever handle at 980mm height. There is a 20mm lip on entry to the bathroom. The bathroom floor is tiled and there is adequate circulation space in and around the room.

The shower has an adjustable hand held shower rose with star capstan taps at 1030mm height. There is a fold down shower chair (530 mm height and 350 mm depth x 600 mm length) and a shower curtain that open all the way to the wall. The shower has a horizontal grab rail (920mm height) and a vertical grab rail (700-1880mm height) both on the wall by the taps.

The toilet is left hand transfer with a 400mm seat height and 700mm from front to rear of the seat. There is 450mm space to the nearest wall and 1650mm to the far wall beside the toilet. The toilet has a rear horizontal grab rail at 1000mm height and a side diagonal grab rail that is 500mm long and 990-1300mm height. The washbasin is 840 mm high, with 730 mm knee space and it is 400 mm deep. The taps are star capstan at 890mm height. The mirror is 900mm at its lowest point.



Bistro and Bar:

The approach pathway to the Bistro/Bar area is 1220mm width with a 2% gradient to the entry door. The door is a heavy double-hinged swing door (minimum door width 810mm) with a lever handle at 830m height. The inside area has good lighting and clear signage. The height of the bar in Happy Jacks Tavern is 1220mm and in the chargrill it is 1250mm. There is adequate circulation space throughout all of the rooms. The tables in the bistro are rectangle style with a height of 710mm, in Happy Jacks Tavern they are round pedestal style with a height of 750mm and 640 mm clear knee space and in the char grill they are square style with height of 740mm. The furniture in all areas is movable. The bain-maries in both restaurants are 910mm in height.

The bistro menus are displayed as you enter into this entrance area and the char grill menu is displayed within the seating area and there is no menu displayed in Happy Jacks Tavern.



Pizza Station:

The pizza station is a small take away pizza shop in the vicinity of the entertainment area of the resort. The entry is a paved path that is flat from the road with a small 8% gradient ramp at the entry door. The entry is a double door with 1700mm clearance when both door are open (850mm for one door). The doors are heavy double -hinged swing doors with push/pull handle at 830mm. The counter is at a height of 910mm. There is one small table in the corner. The pizza station has good lighting with a clearly signed display of menu choices.



Lawsons Entertainment Venue:

The Lawsons entertainment venue is used for concerts and functions throughout the year. Entry to Lawsons is flat and open when there is an event on. The doorway is 1700mm clear door width. There is no foyer. The entry leads straight into the venue room. There is a counter that is 1250mm height. The venue is a large hall so circulation space in the venue will be dependant on the type of event and number of people attending. There are neither fixed seats nor an audio loop.

Both the male and female toilets at the venue have an accessible toilet stall built to standards. Signage to indicate accessible toilets is only visible once inside the toilet room. The door width to both the male and female toilet rooms is 820mm.



Emergency:

The documented emergency sign is displayed next to the door of each room as the doors themselves are glass. There is an audible alarm which will sound in the case of emergency and a warden will seek to evacuate guests to safe refuge. Exit from the site would be via the driveway.