

Cooma Monaro Railway (CMR)

Cooma Railway Station
Bradley St
Cooma NSW 2630

The Cooma Monaro Railway is an historic railway that provides a scenic return trip from Cooma station through Bunyan and Chakola. Cooma station has a gift and information shop with a model railway. Staff have the ability to assist passengers onto the train using a well constructed ramp with rails. There is a wheelchair that can be utilised to gain access through the narrow train doors and placed at the front of the train. If a wider wheelchair is required access can be gained through the guard's carriage in the middle of the train. Assistance at the other platforms is also available.

Reservations:

Phone: (02) 6452 7791
Fax: n/a
Mobile: 0417 061 699
Email: cmri@snowy.net.org.au or manager@cmrailway.org.au
Web: www.cmrailway.org.au
TTY: n/a



Transport:

Transport is easiest via private car or coach. The Transborder Alpinexpress bus takes you to Cooma town centre which is approximately 5 minutes drive from the station. Travel to Cooma is also travel on REX Airlines, the airport is approximately 10 minutes drive from the town centre, however, there is no wheelchair accessible taxi service available in Cooma.

Parking:

There is no designated disabled parking space at the station. However, there is ample parking within close walking distance to the access ramp.

Entry:

From the carpark (compacted gravel surface) there is a wide cement ramp (11% gradient) which leads onto the platform.

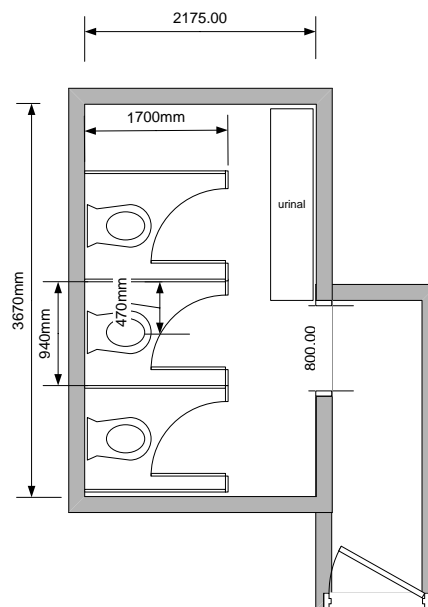


Information/ Souvenir Shop:

At Cooma station there is a ticket sales, souvenir shop and model railway in one room with a wooden floor surface. There is adequate circulation space between displays. The counter for ticket sales and souvenir purchases is 1000mm high and service may occur beside the counter as required. For the model railway a glass panel allows viewing for children and those using a wheelchair.

Toilet:

There are no designated disabled toilet facilities. However, the male toilets have more space for circulation (see floor plan). The door is easy to open with one hand with a width of 800mm and the taps are capstan style at a height of 1030mm. Staff are happy to accommodate and can change the toilets so that females can utilise the one with more space.



Other Facilities:

The railway is available for charter (e.g. for weddings, parties, etc) and catering can be organised at the hall situated on the bank of the Numeralla River at Chakola, some 20 kilometres north of Cooma.

Emergency:

A documented emergency procedure is displayed on the door of each room. The alarm is audio and a Warden will seek to evacuate guests to safe refuge. Each building has a number of emergency entry/exit points. Exit from the site would be via the driveway.