

Department of Corrective Services Museum

Cnr Vagg and Vale Street,
Cooma, NSW, 2630

The DCS Museum is located in Cooma adjacent to the historic and functioning Cooma Correctional Centre. The museum showcases the varied history of the Correctional Services in New South Wales since 1788. It contains information, displays and artifacts from the convicts to the modern day system. Inmates guide tours through the museum. Inmate arts and crafts along with Aboriginal art are available for sale in the craft store attached to the museum. The entire facility is very accessible as all entrances are ramped and the hallways are wide.



Contact:

Phone: (02) 6452 4085
Fax: (02) 6452 2491
TTY: n/a

Transport:

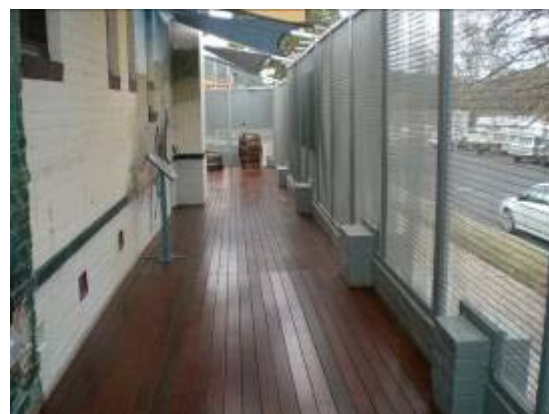
Transport is easiest via private car or coach. The Transborder Alpinexpress bus takes you to Cooma Town Centre which is approximately 5 minutes drive from the station. Travel to Cooma is also travel on REX Airlines, the airport is approximately 10 minutes drive from the town centre. There is no wheelchair accessible taxi service available in Cooma.

Parking:

A designated accessible parking spot is available on the road. Alternatively, it is possible to drive up to the ramp at the entrance for drop off.

Approach and Entry:

There is a clear path of travel from the parking area to the entrance ramp. The only hazard is that you must cross the road from the designated parking space, however, the road is generally quiet. There is a ramped entry (gradient of 11%) to the undercover verandah which is the starting point for your travel through the museum.



Museum:

The path of travel around the museum is completely accessible. The stairs are coded with contrast strips for the visually impaired and all areas are also accessible via ramps gradients. The longer ramps are at between 7 and 11% and the short (>2m) ramp has a gradient of 15.5%. The minimum door width throughout the museum is 830mm. The floor surface throughout the museum varies from polished wooden floorboards to paved areas and concrete. There is ample circulation space between displays and the display are at an average height of 1000 mm. There are seats available throughout the museum for resting as required.

Path of travel around the museum



Toilet:

There is a designated unisex disabled toilet available outside the main museum building via a concrete and wooden ramp. The door to the toilet is heavy and wooden (minimum width 850mm) with a bolt latch. The circulation space within the toilet room is 2000 x 1700 mm. The height of the light switch is 1370mm. There is an horizontal grab rail beside the toilet at 830 mm height. The wash basin is 900 mm high with 770 mm knee space and a single lever (mixer) tap at 1000 mm. The minimum height of the mirror is 1370mm.





Emergency:

A documented emergency procedure is displayed. The alarm is audio and a Warden will seek to evacuate guests to safe refuge. The building has a number of emergency entry/exit points.