

## **Eucumbene Trout Farm**

Round Plain Rd  
Berridale NSW 2628

Open 7 days 10am - 5pm (closed Christmas Day & Boxing Day)

The Eucumbene Trout farm has been operating since 1988. It provides one of the few places in Australia where you are guaranteed to catch a trout. At the Trout farm you can experience a demonstration of the trout farming process, large accessible hatchery tanks for easy viewing, fishing and cooking your trout on site. There is a large grassy picnic area to make a day of your visit. Staff at the Trout Farm frequently cater for groups with a variety of access needs and are alert to needs of people with disabilities.

### **Reservations:**

Phone: (02) 6456 8866  
Fax: (02) 6456 8857  
Web: [www.eucumbene.com](http://www.eucumbene.com)  
Email: [info@eucumbene.com](mailto:info@eucumbene.com)  
TTY: n/a

### **Transport:**

Transport is available via private car. An accessible taxi service is available to be booked for transport to and from Jindabyne.

### **Parking:**

There is no designated parking spaces, however, there is adequate room for parking in the grassy parking lot approximately 20 metres from the entrance to the trout farm. The surface of the parking area is grass and firm gravel.

### **Access and Entry:**

There is a clear path of travel via grass/dirt and concrete paths to the entry. The entry has a small lip to negotiate. The door is 750mm wide with a knob handle at 1100mm. Inside, the floor surface is tiled. There is adequate circulation space around the shop/reception area. The counter height is 960mm with no knee space. The shop area is well lit with good signage.

### **Trout Farm Facilities:**

Leaving the entry to head to the outside facilities, there is door width 750mm, push/pull handle at 1180mm and a small lip of 35mm. Outside there is a large grassy picnic area with an undercover BBQ area. The bench height is 920mm and BBQ height is 650mm. There are also tables and chairs available in this area.



Access to the 'sure catch' ponds is via a ramp (maximum gradient 16%). There are breeding ponds for viewing and two 'sure catch' ponds, one has flat access and the other has two steps.



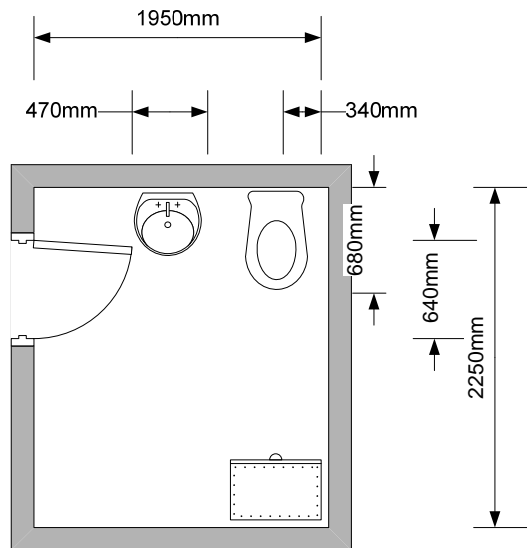
There is also access to the Trout Lake via pathways. The gradient ranges 14.7-24% with the minimum path width 1080mm. The path moves from concrete onto grass/gravel towards the lake.



**Bathroom:**

There are separate male and female toilets. The male toilet is a stall only and the female toilet is a larger room style toilet which may also be used for people with access needs.

There is a drain channel to cross on entry. The door width is 650mm with a knob handle at 1100mm height. There is adequate circulation space around the room. Toilet height 390mm, space beside 150mm to near wall, 1320mm to far wall, 680mm front to rear. There are no grab rails. The wash basin is 850mm height with 750mm knee space, 360mm depth and capstan taps at 860mm. The mirror is 1530mm at its lowest point.



**Emergency:**

A documented emergency procedure is displayed. There is an audible alarm which will sound in the case of emergency and a warden will seek to evacuate guests to safe refuge. Exit from the site would be via the driveway.