

Jindabyne Bowling & Sports Club

Bay St (corner of Kosciuszko Rd)
Jindabyne NSW 2627

The Jindabyne Bowling & Sports club lies on the bank of Lake Jindabyne. The Club offers a range of activities for members, guests and out of area visitors such as; Lawn Bowls, TAB, squash and tennis courts, restaurant, bar and conference room.

Contact:

Phone: 02 6456 1014
Email: jbc@snowy.net.au
TTY: n/a

Transport:

Transport is available via private car or coach. There is an accessible taxi service available to be booked for transport in Jindabyne.

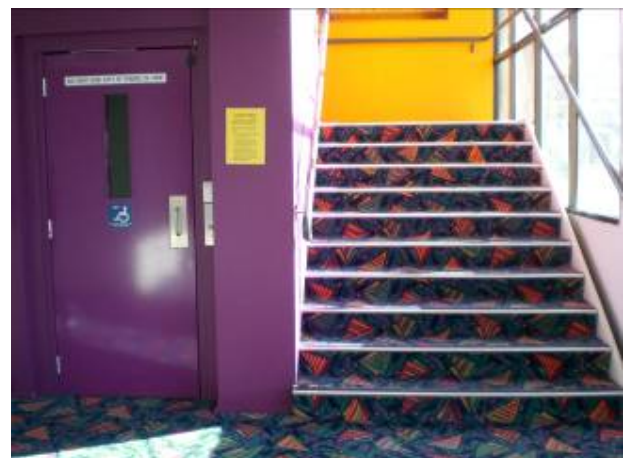
Parking:

There are 2 designated disabled parking spaces directly outside the entrance to the club. These spaces are clearly signposted however, the ground signage is faded. The surface of the carpark is rough bitumen with a few minor ground indentations



Approach & Entry:

The approach from the carpark follows slightly rough ground approximately 10m to the entry. The entry contains 2 double doors with airlock. The doors are slightly heavy outward opening pull/push style (handle height 1000mm) and the entrance is flat. Once through the airlock there is a carpeted area with adequate circulation space which leads to the upper level via stairs or accessible elevator (dimensions 1400mm x 970mm). There is also a ramp entrance at the back of the building that goes through the squash courts and into the bar area. Entrance via this method is only possible by obtaining a key.



Jindabyne Bowling & Sports Club

Bar and Bistro:

The bar and bistro are located on the upper level of the club accessible via stairs or elevator. The floor surface of the area is carpet and there is adequate circulation space between tables and displays in both rooms. The height of the bar is 1200mm. The service at the Bistro requires you to order and pay at the counter (counter height 1240mm). The menu is available on a blackboard above the counter with large print and good contrast. The tables are arranged in rows and are 740mm height with 670mm clear knee space. The lighting in the Bistro room is bright and the view is overlooking the lake.



Toilet:

An accessible toilet is available at the end of a row of stalls in the male and female toilets (stall dimensions 2000 x 1670 mm). The toilet is clearly signed. The door to the toilet area has a minimum width of 810mm with an automatic door closer. The door to the stall is 900mm. There is a side and rear grab rail (height 950mm) for the toilet. The washbasin is pedestal style 860mm height with capstan taps at 930mm. The minimum height of the mirror is 1050mm.



Other Facilities:

Other facilities available include; a bowling green which is on the lower floor with flat entry from the carpark and building and a squash court which is accessible via either the bar on the second floor of the building or a rear entry ramp into the squash court area which has polished wooden floor boards and is flat throughout. To gain access to the squash courts the key is available at the bar.

Emergency:

A documented emergency procedure is displayed. The alarm is audio and a Warden will seek to evacuate guests to safe refuge. Each building has a number of emergency entry/exit points.