

Snowy River Winery

Jindabyne Rd
Berridale NSW 2628

Open 7 days 10am – 5pm

The Snowy River Winery has a café, wine tasting and sales, garden area and African violet sales. All services are situated in the one building with a ramp that leads onto the verandah and allows access to all areas. Three separate entrances from the main verandah exist for main counter, wine area and cafe. Wine tasting/sale area is partially sectioned from café area due to licensing issues. All areas are free from clutter and provide ample circulation space.

Contact:

Phone: (02) 6456 4015
Email: info@snowyriverwinery.com
Web: www.snowyriverwinery.com
TTY: n/a



Transport:

Transport is available via private car or coach. The Transborder Alpinexpress bus takes you to Lions Memorial park in Berridale town centre which is approximately 400m from the winery. An accessible taxi service is available from Jindabyne to be booked for transport.

Parking:

There is no designated parking, however, there is ample flat parking around the building. If a ramp is required, parking to the right of the building will provide the easiest access. The carpark surface is compacted gravel.

Path of Travel:

At the front of the building there are 3 steps leading to the verandah. From the right of the building there is a grassed area and a driveway/cement ramp (6% gradient) which also accesses the verandah.



Snowy River Winery

Entry:

There are 3 entry doors leading from the verandah to the café, to the wine tasting and sales area and to the bathroom area. All 3 doors are the same with minimum door width 900mm lever handles 1040mm high and easy to open with one hand. There is a small 3cm lip to enter through the doors.



Café:

The café serves lunch, snacks and drinks. Service is via the counter (1000mm height). The floor surface is tiled and there is adequate circulation space in the general café area. The tables are four legged wooden tables 740mm height with 620mm clear knee space. The menu is on the blackboard above the counter in large print with good contrast. The café has clear signage and good natural lighting.



Wine Tasting/Sales Area:

The wine tasting and sales area is in the central area of the building however it is cordoned off from the café and bathroom area for licensing reasons, therefore, access is only possible from the verandah. The wine tasting counter is 1000mm height.

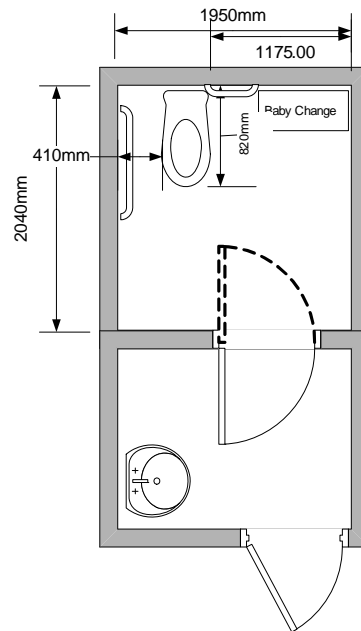


Toilet:

A clearly signed, accessible unisex toilet is available for use (see floor plan). The toilet has one door (850mm width) which opens outwards and leads into a washroom then a second door which opens both ways and leads into the toilet area. There is a rear grab rail (height

Snowy River Winery

850mm) and a side grab rail (810mm minimum height). The washbasin is 790mm height with lever taps at 800mm. The mirror minimum height is 1000mm. There is also a baby change fold down table.



Other Facilities:

The Winery also provides a garden out to the left of the building which provides a beautiful area to sit or stroll. Access to the garden is via a ramp from the verandah.



Emergency:

A documented emergency procedure is displayed. The alarm is audio and a Warden will seek to evacuate guests to safe refuge. The building has a number of emergency entry/exit points.