

## **Thredbo Valley Distillery**

Alpine Way  
Thredbo Valley NSW 2625

The Thredbo Valley Distillery produces Wildbrumby schnapps. The property is open year round and it features a cellar door and café, art gallery and studio, a granite sculpture walk and a working raspberry farm. The cellar door is open daily from 10am to 5pm year round with trading hours extended during winter and holiday periods.

### **Contact:**

Phone: 02 6457 1447  
Fax: 02 6457 1407  
Email: [slap2@bigpond.com](mailto:slap2@bigpond.com)  
Web: [www.wildbrumby.com](http://www.wildbrumby.com)  
TTY: n/a



### **Transport:**

Transport is available via private car or coach, the Transborder Alpinexpress bus takes you to Jindabyne visitors centre or Friday Flat in Thredbo. An accessible taxi service is available to be booked for transport from Jindabyne or Thredbo.

### **Parking:**

There is a designated disabled parking space with small signage, however, there are no markings to indicate the width of the space. The ground surface in the parking area is gravel and grass and may be uneven in places.



### **Approach and Entry:**

The parking is approximately 50m from the entrance to the cellar door/café. The path of travel is along a rustic crushed granite pathway which is well maintained. The maximum gradient of the pathway is 14% with a maximum cross slope of 8%. The pathway leads up to a tiled verandah at the cellar door/café.

## Thredbo Valley Distillery

### Cellar Door/Café:

The wooden entry door into the cellar door/café is 800mm minimum width, outwards opening with no automatic door closer. There is a small step (100mm) which is slightly adapted with a ramped door mat (see picture). The floor surface inside the building is polished floor boards.

There are two counters, one for tasting and the other for sales. The tasting counter is slightly higher, however, both counters are less than 1200mm in height. There is adequate space between displays for circulation and the café table area can easily accommodate a wheelchair.

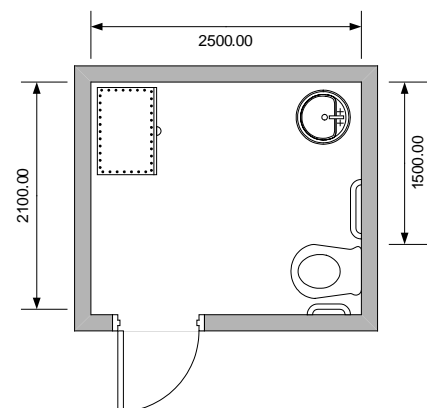


### Toilet:

There is an accessible unisex toilet available. The path of travel is back onto the verandah and follow the verandah around to the back of the building. Caution must be taken following the verandah as there is currently no edge indicators or barriers. The door to the toilet opens outwards (width 800mm) with a knob handle and rustic style latch.



Distillery Toilet



### Other Facilities:

The art gallery and studio are opened by appointment by contacting the resident artist Brad Spalding on 02 6547 1447 or [brad.spalding@wildbrumby.com](mailto:brad.spalding@wildbrumby.com). Exhibitions and workshops for painting and drawing are also held on a regular basis.

**Emergency:**

A documented emergency procedure is displayed. The alarm is audio and a Warden will seek to evacuate guests to safe refuge. Each building has a number of emergency entry/exit points. Exit from the site would be via the driveway.