

## **Thredbo Chairlift and Kosciuszko Summit Walk**

Valley Terminal  
Thredbo NSW 2627

### **Enquiries:**

Phone: General enquiries (02) 6459 4100  
Fax: n/a  
Email: [reservations@thredbo.com.au](mailto:reservations@thredbo.com.au) or  
[info@thredbo.com.au](mailto:info@thredbo.com.au)  
Web: [www.thredbo.com.au/thingstodo/summer/index.asp](http://www.thredbo.com.au/thingstodo/summer/index.asp)  
TTY: n/a



### **Transport:**

Transport to Thredbo may be via private car or coach. An accessible taxi service is also available to be booked for transport from Jindabyne. The Transborder Alpinexpress bus takes you to Friday Flat in Thredbo where there is a good path of travel (~500m) to Valley terminal.

### **Parking:**

There are two designated accessible car parking spaces on the road opposite the main terminal building. They are clearly signed. Access from here to the Valley Terminal building is along a bitumen path with a slight uphill gradient.

### **Chairlift:**

During summer, you can take the Kosciuszko chair lift which goes from the village to Eagles Nest Café and accesses the Summit walks to Mt Kosciuszko, the highest point in Australia.

#### To get on the chair lift:

The Kosciuszko Express chairlift is a 4 seated chair lift located at Valley Terminal on Friday Drive in Thredbo. There is a ramp that goes from the car park to the bottom of the chair lift that has a gradient of 9%. However, the gradient is not built to standards for wheelchairs. There is a flat entrance to the chair round the right hand side.

Motorised and manual wheelchairs as well as strollers can be strapped onto the chair lift. The chair dimensions are: 450mm deep, 430mm backrest, 1920mm length. The chair can be stopped and/or slowed down for easy loading.

**Kosciuszko Express Chairlift**



The Snowgum chairlift is used 8 weeks either side of the ski season because of maintenance on the Kosciuszko chair. The Snowgum chair is accessible by a ramp that is 1230 mm wide, handrail 900mm high and a gradient of 7%. It is a two seated chair and has a much rougher walk at the top of the chair. It is a stair walk to Eagles nest café from the top of the chair. It is

## Kosciuszko Summit Walk

recommended that people who may experience problems with access plan their walk when the Kosciuszko Express chairlift is operational. Please call Thredbo Resort for shut down times. Staff who work at the Thredbo chairlifts are experienced with assisting people with disabilities.

**Snow Gum Chairlift**



### **Summit walk**

The walk begins at a paved path which leads on to a footbridge that crosses Merritt's Creek. The majority of the walk (5km to Mt Kosciuszko) follows a raised metal pathway with occasional steps that range between 18 cm and 21cm. This path turns into a set of 15 + stone stairs just before the Mt Kosciuszko lookout (~1.5km from Eagles Nest). The path gradient ranges between 12-17%. Families with prams and some people in wheelchairs have been able to reach the lookout if assisted by companion/s.

It is possible to book into a guided walk to Kosciuszko with a guide who will give you an informative talk on the unique flora, fauna, geological features and the history of the area.

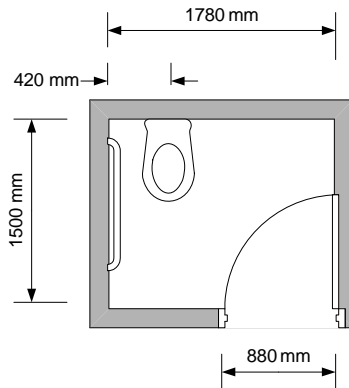
### **Eagles Nest Restaurant**

The Kosciuszko Express Chairlift leads to Eagles Nest Restaurant and to a small viewing area at the right of the drop off. Exiting the chair lift at the top, there is a gradient of 15%. To get back on the chairlift for the ride down, there is a 22% gradient. A set of 10 stairs leads to the entrance to Eagles Nest, there is no ramp access. To gain entry to the main Eagles Nest restaurant a further set of 10+ stairs must be climbed.

There is a bathroom available once inside the eagles nest facility, however, there is no designated disabled toilet. The bathroom door to the bistro is 790 mm and the stall is 650 mm wide.

**Valley Terminal Toilet:**

In the male and female toilet rooms behind Valley Terminal there is a designated disabled cubicle in each (see floorplan). There is a flat path of travel around the Valley Terminal Building.



**Outside the cubicle**  
Mirror height 1100mm  
Sink Height 900mm  
Knee space: 580mm  
Tap height 1000mm