

Banjo Paterson Inn, Clancy's Brasserie

1 Kosciuszko Rd
Jindabyne NSW 2627

The Banjo Paterson offers quality accommodation, dining, entertainment and relaxation facilities. The accessible facility at the Banjo Patterson Inn is Clancy's Brasserie. The Brasserie provides an accessible restaurant area and bathroom facilities.

Contact:

Phone: 02 6456 2372
Free call: 1800 046 275
Fax: 02 6456 1138
Email: reservations@banjopatersoninn.com.au
Web: www.banjopatersoninn.com.au
TTY: n/a

Transport:

Transport is available via private car or coach. There is an accessible taxi service available to be booked for transport in Jindabyne.

Parking & Approach:

Parking is available behind the Banjo Paterson Inn with a wide path that winds down around the side of the building to the front bar area. If you continue down the ramp to the right, this will take you to the Brasserie. There are no designated accessible parking spaces in the car park.



Clancy's Brasserie

Entry:

The ramp from the carpark to the entry is approximately 60m with a width of 2100mm and a maximum gradient of 14%. The entrance to the bar area of the Banjo Patterson Inn is flat through a 1700mm wide door which has an automatic door closer and a lever handle at 1000mm. The door is easy to open with one hand. There is adequate circulation space in the bar area and the floor surface is carpet. The bar is at a height of 1100mm and there is good lighting and clear signage.



Brasserie:

There is a licensed brasserie attached to the bar with meals ranging from main \$18-70, entrée \$10-20, lunch \$10 -40. To get to the restaurant you go through the first door into reception which is a double door with a width of 1900mm. The second door from the reception to the restaurant is a double door with a 1500mm clearance width. The first door has a lever handle at a height of 970mm. The second door has a knob handle at a height of 800mm. The area has good lighting and has clear signage.

There is a dining area which has 2 stairs with handrail to negotiate (see picture below). The height of the bar is 1000 mm. Tables can be brought down onto the lower level. Staff can get food from the food service bar for any customers who can't access that area. A large print menu can be printed on request.



Clancy's Brasserie

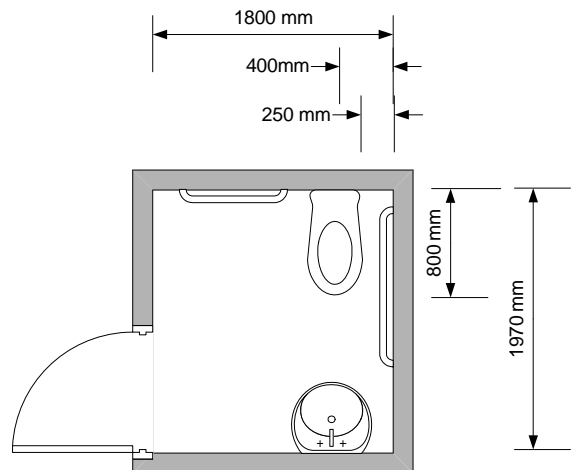
There is also a flat cocktail bar area which has a flat path of travel from the reception doors, a wooden floor surface and adequate circulation space in some areas around the tables and bar (see picture below).



Toilet:

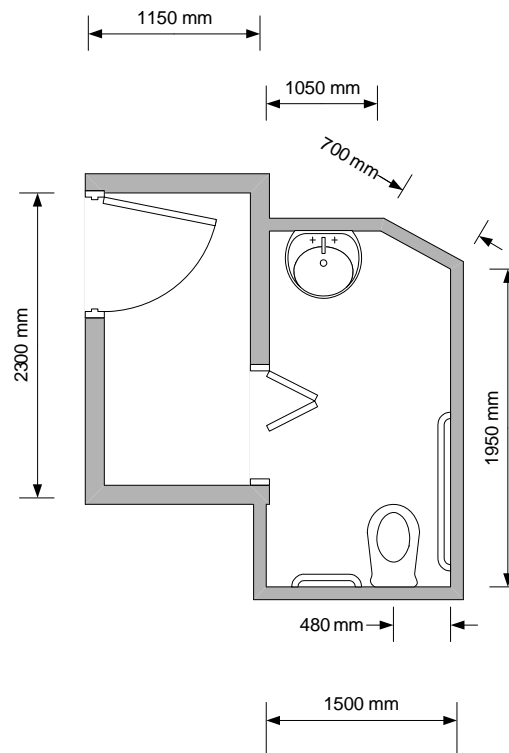
Clancy's Brasserie has 2 accessible toilets available. One in the dining area and one in the bar area. Both toilets are clearly signed with tiled floors and adequate circulation space.

The dining area toilet has an inwards opening door with 900mm minimum door width. The door is easy to open with one hand with a lever handle at 1100mm height. The toilet has a rear horizontal grab rail at 800mm height and a side horizontal to diagonal grab rail 820-1200mm height. The washbasin is at a height of 850mm with single lever mixer tap at 950mm. The minimum height of the mirror is 1030mm.



Clancy's Brasserie

The toilet in the bar area has a bi-fold entry door with 850mm minimum door clearance. The toilet is right hand transfer and has horizontal rear grab rail at 830mm height and a side horizontal to diagonal grab rail at 830-1140mm height. The basin is 900mm height with single lever mixer tap at 1000mm height. There is no mirror.



Emergency:

A documented emergency procedure is displayed. The alarm is audio and a Warden will seek to evacuate guests to safe refuge. Each building has a number of emergency entry/exit points.