

## **High Life Living Café**

72 Jindabyne Rd  
Berridale NSW 2628

This café serves light snacks ranging in price from \$3- \$10. It seats around 12 people. There is an accessible bathroom located inside the café. It also has a retail section which includes various hand made/painted household items.

### **Contact:**

Phone: (02) 6456 3633  
TTY: n/a

### **Transport:**

Transport is available via private car or coach. The Transborder Alpinexpress bus takes you to Lions Memorial Park in Berridale town centre which is approximately 400m from the winery. An accessible taxi service is available from Jindabyne to be booked for transport.

### **Parking:**

Currently there are no accessible car spaces in Berridale. There are, however, plenty of car parking spaces on flat bitumen.

### **Entry:**

Flat entry with a small 200mm long incline into the café. The door is 840mm width with lever handle at 1120mm. The door is easy to open with one hand.

### **Cafe:**

The counter is 1120mm height with no knee space. The lighting in the café is bright and the menu has good contrast. The floor surface is wooden floorboard with adequate circulation space around the café. The minimum circulation space between occupied tables is 770mm. The tables are round with a pedestal leg. They are at a height of 750mm with knee space of 700mm.



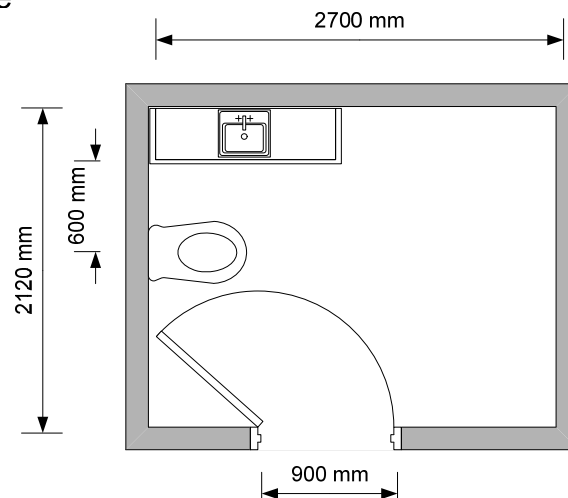
## High Life Living Cafe

### Toilet:

There is a unisex toilet in the café that has adequate circulation space but no grab rails. The entry to the toilet is through an inwards opening door (width 900mm) with a lever handle at 1070mm. There are no grab rails in the toilet. The basin height is 850mm with no knee space and star capstan taps at 950mm. The minimum height of the mirror is 950mm.



High Life Café  
Bathroom



### Emergency:

A documented emergency procedure is displayed. The alarm is audio and a Warden will seek to evacuate guests to safe refuge. The building has a number of emergency entry/exit points.