

Cradle Mountain Chateau

3718 Cradle Mountain Road
Cradle Mountain TAS 7310

Cradle Mountain Chateau is set in alpine woodland at the northern boundary of Cradle Mountain – Lake St Clair National park. The Chateau offers hotel style accommodation with three of these rooms set up as accessible. The Chateau also offers two restaurants and a bar, a day spa, conference facilities and a wilderness gallery.

Reservations:

Phone: 1800 084 620
Email: info@puretasmania.com.au
Web: www.puretasmania.com.au
TTY: n/a

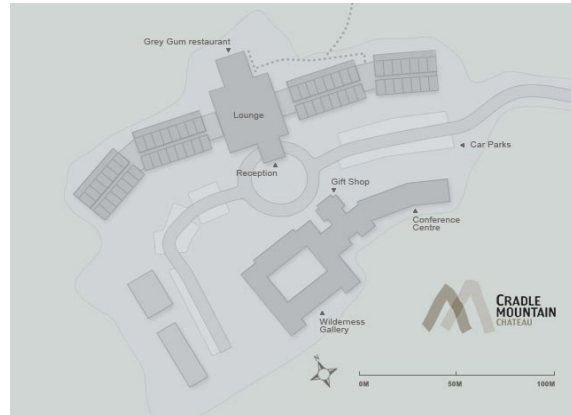


Figure 1: Map of Cradle Mountain Chateau

Transport:

Travel to Cradle Mountain Chateau is by private car or coach service. Tassielink Coaches travel from Launceston or Strahan however at the time of writing did not provide a wheelchair accessible service. It would be advisable to contact the service in case this was to change in the future. Tel: 1300 300 520 www.tassielink.com.au
To reduce traffic flow within the park the Cradle Shuttle Bus Service departs from the Cradle Transit Terminal. This service is not wheelchair accessible.

Parking:

There is no designated accessible car space. The undercover drop off area directly in front of reception is for setting down and picking up guests. The car park areas are clearly sign posted 30m to the right and left of the set down area. The hotel staff can assist with handling luggage. There is a slope of approx 12.8% from the parking areas to the reception entrance.



Picture 1: Covered set down area

Cradle Mountain Chateau

Entry:

There is a flat entry from the covered set down area into a reception hall through 2 glass doors. The single door opening is approximately 850mm clearance with door handle height of 920mm. Once inside the reception hall; the reception desk is immediately on the right.



Picture 2: Entry

Reception:

The reception area contains adequate circulation space on a wooden floor, with clear signage and good lighting. The reception counter is 1320 mm at its highest point and 1050mm high at the lowest point. There is no knee clearance. There is a lounge and coffee table available for use.



Picture 3:
Reception desk

Accommodation:

From reception the path of travel to the accommodation is to move towards the bar area, then turn left into the West wing hallway. The hallway has low pile carpet. Rooms 31, 32, and 33 have bathrooms that would be suitable for a wheelchair user.

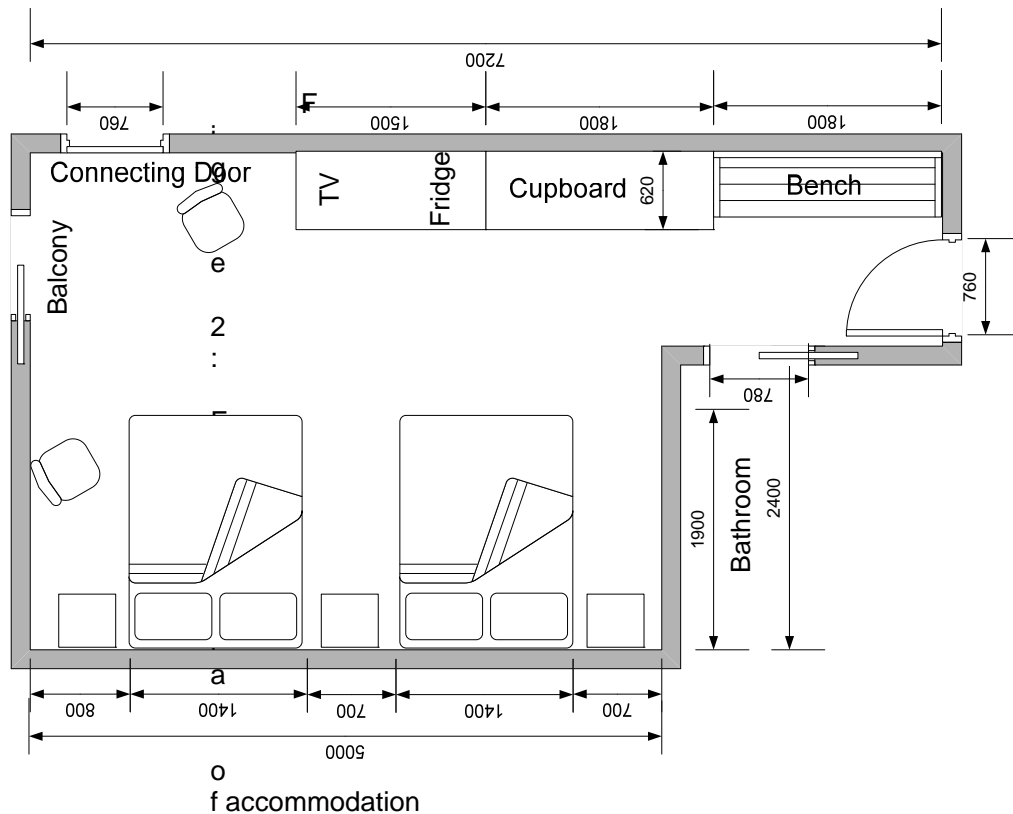
Entry to the room is directly from the hallway. Clearance through the inward opening front door is 760mm and the lever handle is 1000mm high. The door is heavy and has a door closure that will hold at full open. The flooring inside the room is medium pile carpet. There is no emergency egress signage.

Hanging space is only available inside the cupboard on the right hand side; height of hanging space is at 1730mm. The television is located inside a wall unit (750mm high) on the right hand side which also contains the remote control unit. Also on the right hand side are a bar fridge and tea and coffee making facilities at 900mm high.

The room has two queen size beds. Both beds are on castors and can be moved. There is adequate space beside the main bed for transfers. They are 550mm high, with 100mm underside clearance.



Picture 5: Bedroom



Bathroom Area:

Cradle Mountain Chateau

Entry to the bathroom is from the hall way with 780mm door clearance through a cavity slide door. The door is light to move, however there is only a small door lock as a handle (approx 900mm high).

The bathroom has adequate circulation space and has linoleum flooring. There is a mirror at 900mm to 1700mm high. The wash basin is 770mm high with underside clearance of 620mm. The taps are capstan and set 400mm from the front of the basin. The height of the taps is 850mm.

There is adequate circulation space in the wet area and it is free of hobs, steps and floor tracks. There is a curtain surrounding the shower area. There is a vertical grab rail 800mm to 1900mm in height and a horizontal grab rail 600mm in length and 800mm high. There is a hand held shower hose and 2 capstan taps. The fold down shower seat is 500mm high, 380mm deep and 960mm long.

Picture 6: Shower area



There is space for a right hand transfer to the toilet. The height of the toilet seat is 450mm, 450mm from centre line to nearest object and 540mm from the front of seat to rear. A continuous grab rail is situated at the rear and side at 800mm high. The length at rear is 800mm, length at side is 670mm and also has a 700mm vertical rail.

Picture 7: Toilet circulation space

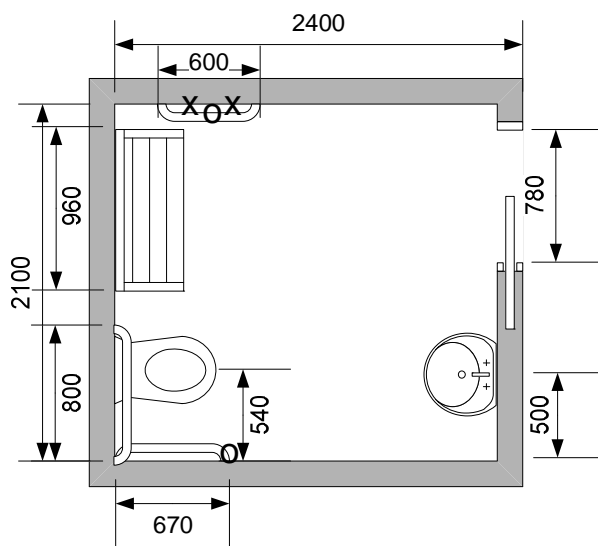


Figure 3: Floor plan of bathroom

Cradle Mountain Chateau

Other Facilities:

Restaurant

Cradle Mountain Chateau offers two dining areas. Quolls restaurant has café style dining and Grey Gum restaurant offers fine dining. Entry to both dining areas is directly from the reception hall through open double doors. The tables in both dining areas are 740mm high with 700mm underside clearance. Tables are a mixture of pedestal style and standard long tables with corner legs. There is ample circulation space between tables. The buffet service counter in Quolls restaurant is 700mm high. A unisex accessible toilet is available just outside the restaurant areas to the left of the foyer in the East wing passage.



Picture 8: Quolls restaurant

Library area

The only accessible library area is situated in the East wing.

Day Spa

The Day Spa is located in the East wing immediately beyond the foyer on the right hand side. The Day Spa offers several facilities that have varying degrees of accessibility. Management are able to assist with inquiries.

Conference Centre and the Wilderness Gallery

The conference centre and gallery is located in the building directly opposite the main entry to the Chateau. Entry is via a ramp of 6.2% with tactile markers at the bottom. Once inside the main foyer, a ramp leads to a second level. Turning left at the top of the ramp the hallway leads to the conference centre and an accessible toilet on the immediate left. Turning right at the top of the ramp leads to the gallery entry. The floor covering in the foyer, on ramped areas, in hallways and in the conference centre is low pile carpet. Inside the gallery the flooring is timber.



Picture 9: Ramped entry to the Conference Centre and Wilderness Gallery

Emergency:

The alarm is audio. Each building has a number of emergency entry/exit points.