

Cradle Transit Terminal

Cradle Mountain Road
Cradle Mountain TAS 7310
Phone: 03 6492 1110
Fax: 03 6492 1120

Cradle Transit Terminal is located 2km before the Cradle Mountain park entrance. The centre is open daily from 8 am to 5 pm and is the main transit facility for coaches and the shuttle bus. The terminal also houses the National Parks information shop and a café. An accessible toilet is available.

Parks and wildlife service Tasmania have produced a booklet titled '*Parks for all people. Access for the mobility impaired in Tasmania's National Parks and Reserves*'. This booklet is available at the Visitors Information and Transit Terminal Park Shop and features several walks around Cradle Mountain.

Reservations

Email: cradle@parks.tas.gov.au
Web: <http://www.parks.tas.gov.au/natparks/cradle/facilities.html>
TTY: n/a

Transport:

Travel to Cradle Transit Terminal is by private car or coach service. Tassielink Coaches travel from Launceston or Strahan however at the time of writing did not provide a wheelchair accessible service. It would be advisable to contact the service in case this was to change in the future. Tel: 1300 300 520 www.tassielink.com.au
To reduce traffic flow within the park the Cradle Shuttle Bus Service departs from the Cradle Transit Terminal. This service is not wheelchair accessible.

Parking:

There are two designated accessible car spaces with signage located separate to the main car park and in close proximity to the main building. Path of travel to the transit terminal is to cross the asphalt area immediately behind the parking space. Visible from the parking space are two ramps that lead to porch areas. The ramp to the right leads to the transit terminal shop and has an upward slope of 9.9% and covered with chicken wire. The ramp is 3.1m wide and 3.1m long. There is a 50mm angled lip at the base of the ramp and the ramp has no handrail. The ramp to the left leads to the second entry to the café.



Picture 1: Car park



Picture 2: Ramped entries from car park

Cradle Transit Terminal

Entry:

At the entry to the Transit Terminal Shop there are two doors. The doors are outward opening and have lever hook handles at 1040mm. The doors are 850mm. The doors have closures and there is a 25mm lip. The entry area is flat and is 3m x 3m and has an overhead covering of sail cloth. The floor surface is timber covered with chicken wire. The door is of heavy weight.

Picture 3: Entry doors



National Parks Information Shop:

Once inside the building you are in the National Parks information shop. This is a large area approx 12m x 7m offering adequate circulation space.

The floor is linoleum and the area has good lighting. The shop has a service counter with a height of 910mm.

The service counter is a point of contact with park staff and for purchases within the park shop.

Picture 4: Park Shop service counter



Cradle Mountain Café:

The Cradle Mountain Café is adjacent to the National Parks information shop and in the same building. From the information shop, go through the double doors into the café. The doors are light weight with a single door opening of 770mm. The doors have 'D' handles, the bottom of the handle is 1040 and the top is 1250mm. Immediately beyond the doors is the counter area ahead. The café offers adequate circulation space on timber flooring. There are several pedestal tables 730mm high with 690mm underside clearance and have an area of 700m x 700mm.

The second entry to the café is directly from the outside porch and separate to the park shop. It is located opposite the food service counter. The doors are double with a single door with of 810mm. The door handle is a lever hook at 990mm. When exiting this door you will be on a wooden veranda 1700mm wide. The veranda follows the length of the building with a 5 m ramp of approx 9%.

The café has several counters. An information counter is 735mm high with 700mm under clearance. An information display counter and coffee counter at 880mm and a food service counter at 1180mm high. The menu for the café is on a board situated on the wall behind the food service counter.

Cradle Transit Terminal



Picture 5 & 6: Double door leading to café, accessible bathroom and information counter

The café has an outdoor dining area. To enter to the outdoor area exit through double doors situated at the opposite end of the café to the park shop entrance. The doors have an opening of 800mm and 810mm and have hook lever handles at 950mm. Both doors have door closures and are heavy to medium weight. There is a lip below the door of 20mm. To the right of the exit to the outside area is an Internet café terminal and a public telephone at 1500mm high.



Picture 7: Exit to café outdoor area



Picture 8: Internet Café/ Telephone



Picture 9: Second entrance to café

Cradle Transit Terminal

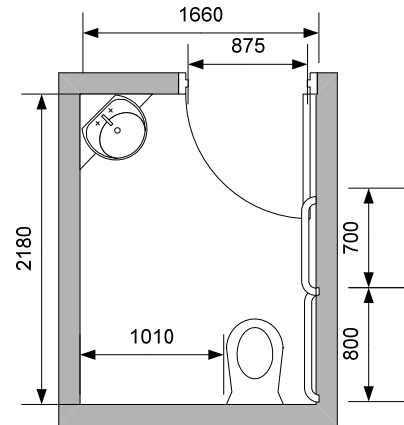
Bathroom Area:

The bathroom is in the café area of the complex. After entering the café from the Park Shop, turn to the right and the toilet is at the end of the corridor.

Entry to the bathroom is first through a light push door. There is no signage on this door to indicate an accessible bathroom. Inside you are in a large area with linoleum floor. To the left is the accessible bathroom with clear signage. The bathroom door is 875mm wide with a push door (inwards) of medium weight. On the inside is a clasp lock at 1000mm. The toilet has clear circulation space of 1500mm x 1500mm. The toilet is a right hand transfer with a clear space of 1010mm and the height of the toilet is 450mm. The closest wall to the toilet is 440mm from centre and on this wall is a grab rail at 800mm high and 800mm horizontal. Then 45 degrees for 700mm to a height of 1300mm.

A basin is situated in the corner and is 800mm high. Distance from front of basin to lever mixer is approximately 450mm. Under side clearance of 630mm. A mirror is beside the basin at height 1100mm to 1700mm.

Figure 1: Floor plan of accessible toilet



Emergency:

Emergency entry/exit points are clearly marked throughout the building.