

Best Western Beechworth Motor Inn

54 Sydney Road,
Beechworth, Vic, 3747

The Best Western Beechworth Motor Inn is located 1km North of the Post Office in the Historic Township of Beechworth. Accommodation at the Beechworth Motor Inn consists of 10 units with various bedroom configurations. The most spacious and accessible floor plan of these is Unit 4 which has a queen size bed.

Reservations:

Phone: 03 5728 1301
Fax: 03 57 282 007
Email: contact@beechworthmotorinn.com.au
Web: www.beechworthmotorinn.com.au/
TTY: n/a

Transport:

Transport to Beechworth is via private vehicle, private coach or V-Line coach. V-Line trains run to Albury or Wangaratta and there is V-line coach link up from Wangaratta to Beechworth. The coach service uses an accessible vehicle. Contact V-Line 136 196 for information on availability and schedules.

Parking

There is no designated parking available on site. Parking is available opposite motel reception on concrete driveway. Parking is also available outside each motel unit and is undercover. There is ample drop off and circulation space at the front of the motel.

Entry

There is good lighting and signage at the motel entry. The path of travel from the parking bay to reception entry is to cross over the main drive, over a slight gradient up of 2.1% veering left to a set of stairs to the main entrance. There are four steps (640mm rise) up to the door with a handrail of 870mm high on the left hand side. The owners are willing to come out to guests if they are unable to get up the stairs. Once inside the reception area, there is ample circulation space and the reception counter is low at 1020mm high.



Picture 1: Reception entry



Picture 2: Reception desk

Best Western Beechworth Motor Inn

Accommodation

From reception, travel in your vehicle to park outside each unit. Disembark onto loose gravel surface and then move onto concrete path directly in front of units. Entry to the units is via a small threshold ramp approximately 250mm long and a rise of 50mm. The door opens inward with clearance of 780mm and the door knob is at 1350mm high. The door is light with no self door closure. Immediately on the right inside the door is the key tag insertion for power at 1370mm high.

There is hanging space available at the rear of the room in a cupboard at 1720mm high and the flooring is low pile carpet.



Picture 3: Accommodation entry

Living

The motel units are all identical in size with an ensuite bathroom. Differing configurations of beds (king, queen, singles etc) will suit differing needs. The unit with the most floor space available is set up with one queen size bed (Unit no 4). The room has a two seater couch (440mm high) and space at a bench on the opposite wall with under bench clearance of 735mm. Tea and coffee facilities are at 770mm high and there is a bar fridge under the bench. There is a television and remote control at bench height.



Picture 4: Lounge



Picture 5: Bed

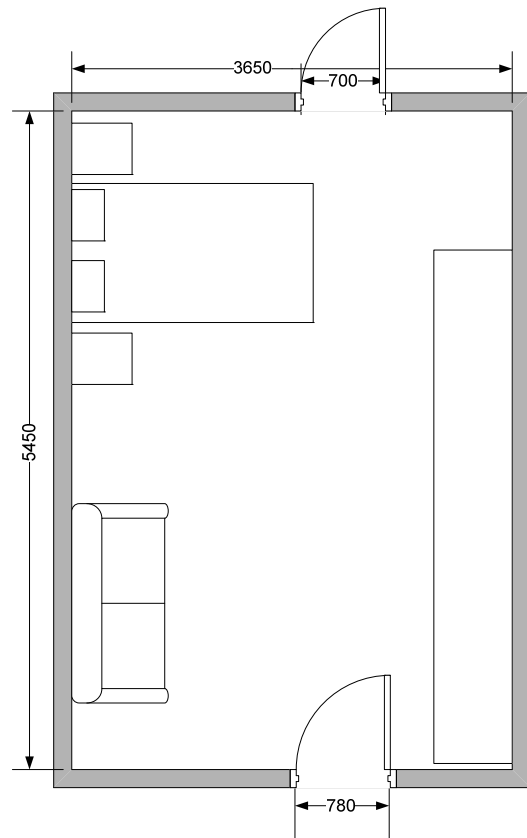


Figure 1: Accommodation

Best Western Beechworth Motor Inn

Bedroom

The queen bed has dimensions of 1150 x 2000mm. The bed height is 560mm, is on castors and has 90mm underside clearance. There is a mirror at 600 – 1850mm high. There is ample room next to the bed for transfers.

Bathroom

The bathroom door offers 700mm clearance and pushes inward to the ensuite with door knob at 1200mm high. The door is light to move. Circulation within the ensuite is at most approximately 850 x 850mm and the floor surface is tiles. The mirror is 700 – 2010mm high. The washbasin is 830mm high, has 650mm underside clearance and 160mm knee depth clearance. There are two capstan taps 320mm deep and 900mm high.

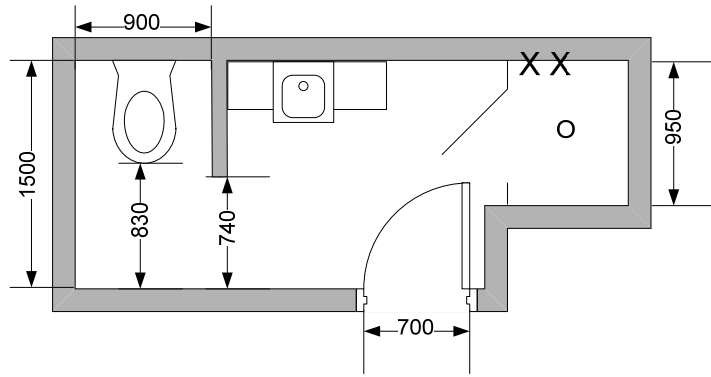


Figure 2: Bathroom

The shower is an enclosed area with three tiled walls and one glass door entry with 540mm clearance. The internal circulation space is 840 x 900mm and there is a small step down of 40mm to enter. Height of taps is 1080mm and there are no grab rails. There is a secondary doorway to the toilet of 740mm clearance but no actual door. The toilet has only 250mm either side and 830mm front clearance. Seat height is 430mm and front of seat to rear 650mm.



Picture 6: Toilet



Picture 7: Shower