

Buttercup Cottage

271 Buttercup Road
Merrijig VIC 3723

Buttercup Cottage is a self contained unit that sleeps 4, with 1 double and 2 single beds, located in a rural setting. The unit is quite spacious with good clearances and circulation space. Accessibility has been well provided for throughout the building with the bathroom, shower and toilet facilities in particular provide very good accessibility.



Picture 1. Buttercup Cottage

Reservations:

Phone: 03 5777 5591
Fax: 03 5777 5905
Email: buttercup@mansfield.net.au
Web: www.buttercup.com.au
TTY: n/a

Transport:

Transport is available via private car. There is a bus service to Mansfield. Buttercup Cottage is approximately 15km from Mansfield. There is a local taxi service.

Parking:

Parking is available at either reception or next to the cottage, however reception is not accessible. Reception is at the owners' house. There is a gravel parking area with a path (including two platform steps) to the front door of reception.



Picture 2. Parking

The owners are happy to meet guests at the cottage to complete check-in and assist with baggage if needed. Please call ahead to make arrangements. There is mobile phone reception at Buttercup Cottage.

The carport at the cottage is concrete, although a little narrow at 3m wide. There are plans to widen this area. At present vehicle exit on one side is onto a slightly uneven gravel surface while the other exits onto concrete adjacent to the ramp.



Picture 3. Entrance

Buttercup Cottage

Accommodation

Entry:

From the carport there is a 3.3 metre long ramp (at 6.1%) to a wide veranda. The threshold has a 25mm lip. Inside is a flat polished floorboard surface. The doorway is 825mm wide. There is an outward opening fly screen door with D handles. The main door is not heavy, inward opening and has hooked lever handles 1000mm high.

Kitchen/ Dining/ Lounge Area

The living area is quite spacious and uncluttered with good circulation space between furniture. It has a lounge area at one end and a kitchen at the other. The floors are polished floor boards. All switches are of the big button type and are at around 1100mm high and are easily reached. There is a remote control for the TV which is 800mm high and for the heating/airconditioning unit. There is a wall mounted phone at 1000mm high.

The seat height of the lounge chairs is 490mm. The dining table is a standard four legged table 800mm high with knee clearance of 680mm and seats four.

The kitchen benches are at 960mm high. The microwave is under the bench at 700mm high. There is an under-bench electric stove and bench top hotplates with the first hot plate being 100 mm from the front. There is a dishwasher at floor level.

The sink tap is 485mm back from the front of the bench and 100mm higher than the bench.



Picture 4. Kitchen/Dining



Picture 5. Lounge Area

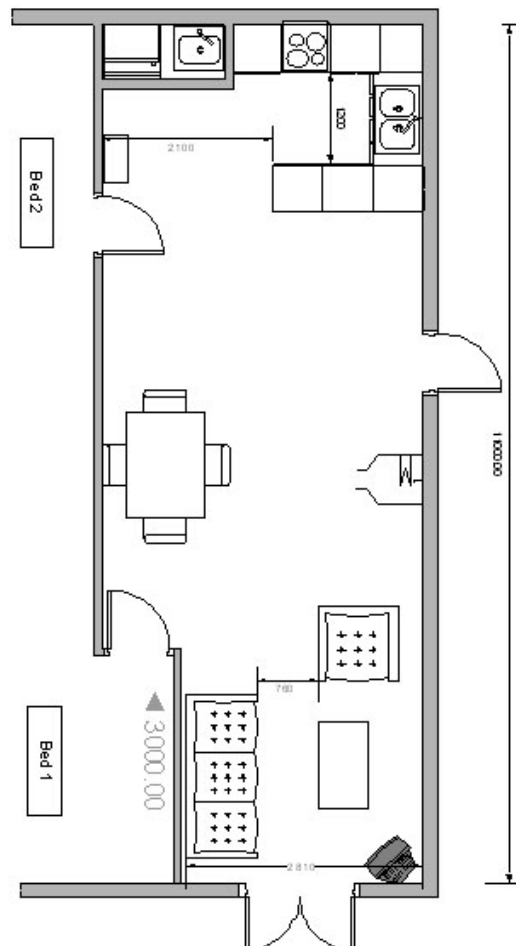


Figure 1. Kitchen/Dining/Lounge Area

Buttercup Cottage

Bedroom 1

Bedroom 1 has been designed to be more accessible, in particular with regard to the ensuite. The door to Bedroom 1 is 820mm wide. The door handle is 1070mm high and is a hooked lever type. The bedroom has good circulation space. There is room for a hoist if the bed is moved closer to the window. The bed height is 600mm with a 180mm high space underneath.



There are two bedside tables and an antique arm chair by the external door. The door opens inwards against the wardrobe. A luggage rack for suitcases is provided. The clothes hanging rail in the wardrobe is at 1500mm high. There is a full length mirror in the room with a minimum height of 340mm.

Bedroom 2 is not as spacious as bedroom 1 and the ensuite is not accessible.

Toilet / Shower Bathroom

The toilet is 450mm high. The rear and side grab rails are 800mm high. The front of the toilet seat is 840mm from the back wall and the centreline of the toilet is 450mm from the side wall. There is good space beside the toilet for right hand transfer (approx. 1220mm).

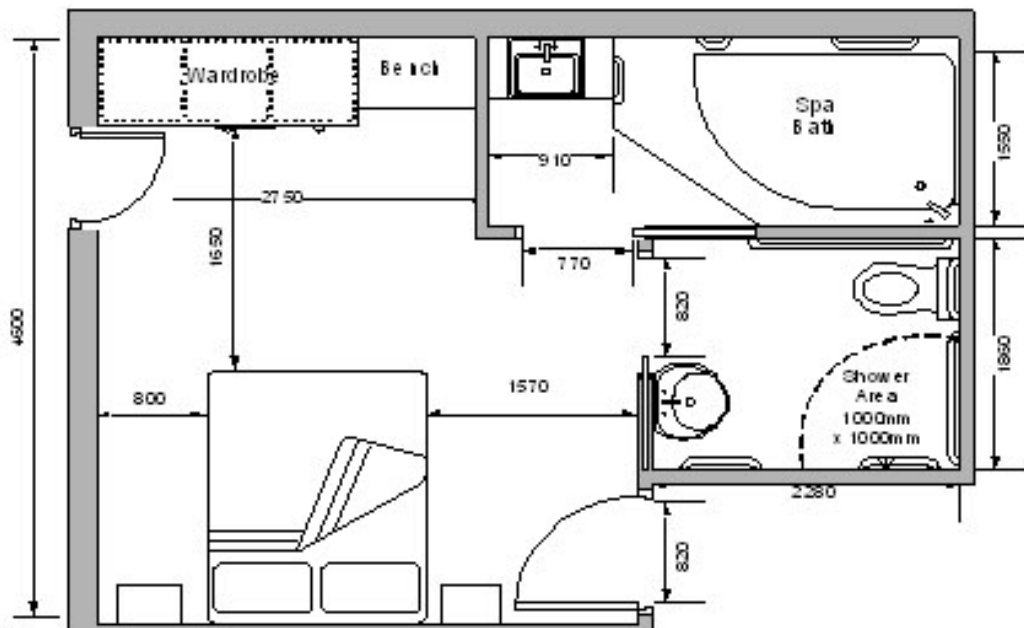


The shower is accessible with an open flat entry. There are two grab rails in the shower corner at 800mm high. The shower has lever type taps. The shower is a hand held nozzle type attached to a vertical sliding track. There is a free standing chair in the shower.

Picture 7. Bathroom

Spa Bathroom

This bathroom is accessed through a sliding door which has an opening 770mm wide. It has a shallow recessed door handle 1000mm high and is not heavy. Circulation space is a little limited at 1100 x 850mm. The floor is a smooth tiled surface. The basin is 790mm high with no knee space. The capstan taps at the rear of the basin are 850mm high.



Buttercup Cottage

Emergency:

In addition to the front door there is an exit door opening through a flat threshold onto the veranda at the west end of the living area which could provide an alternative exit in an emergency.

Exit from the site would be via the driveway and there is another gated exit from the property on the northern boundary next to the house.