

Falls Creek Country Club (FCCC)

Bogong High Plains Road
Falls Creek VIC 3699

Falls Creek Country Club is a 6 floor facility housing 70 self contained apartments and a dining room. It offers accommodation to groups and families. The main entrance is at ground level and the floors are linked by an elevator. The apartments vary in size and configuration, offering several floor plan options and bathroom facilities. The dining room has a unisex accessible toilet. The most accessible floor plan has been detailed here.

Reservations:

Phone: 03 5758 3391
Fax: 03 5758 3481
Email: enquiries@falls creekcountryclub.com.au
Web: www.falls creekcountryclub.com.au
TTY: n/a

Transport:

Transport to the mountain resort is available via Falls Creek Coaches which run services to Albury Airport. At present no coaches have wheelchair facilities but are due to be available in February 2008. FCCC offers a guest courtesy shuttle to the bus terminal, car parks and Falls Express. This vehicle is not wheelchair accessible.

Parking:

There is no designated parking at the FCCC. The driveway leads to a drop off area of approximately 10m x 10m in front of the main entrance. This area has a mixed gradient ranging from approximately 4% to 9%. The path of travel from the drop off area to the front entrance is approximately 10m long, clear of large obstacles but with some unevenness due to broken concrete.

Entry:

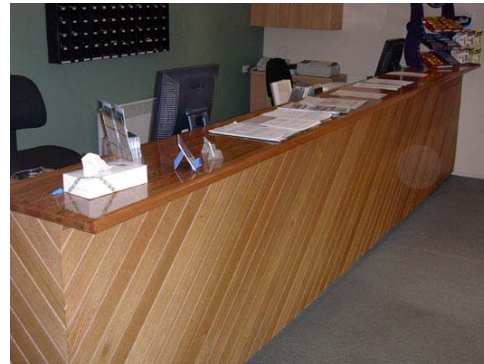
There is a short rise in the path for approximately 700mm with a gradient of 14%, followed by a further 1100mm of 9% to the front door. There is a 2% cross fall running to the right. The entry is then flat through double glass doors with single opening a clearance of 850. Doors have self closures and open in and out with door handles at 800 – 1090mm high. Directly inside the door and on the right hand side is a snow grate from a now disused entry. This poses a potential hazard. Once inside, the reception is located on the left through double doors that remain open during office hours.

Picture 1. Entry



Reception:

The reception area contains adequate circulation space, half tiled and half carpeted with a 10mm lip at join. The reception counter is 1100mm high with clear signage and good lighting. There is another single door from the reception area that leads to the dining room.



Picture 2. Reception counter

Accommodation:

From reception, the path of travel to the accommodation is to cross back through the entry hall to the lift. The elevator has a door clearance of 875mm and internal circulation space of 1400mm x 1940mm. The buttons are at a height of approx 1200mm and there is a hand rail on one wall of 920mm high. Take the lift up two flights to the 4th floor, (ground floor is level 2). Out of the lift make a left hand turn through the lift lobby to a single glass on the right that leads to a hallway. This door (clearance 900) is heavy, self closing, and outward opening with a door knob 940mm high and separate lock approximately 250mm higher. (Management is planning to change over to a card swipe mechanism but have no time line on this at present.) There is a lever handle internally. Follow the hallway to room 405 on the right hand side. The apartment door opens inward, is self closing and has a door knob with lock at 940mm and 900mm clearance. The hallway width is at least 1000mm wide.

Kitchen / Lounge / Bedroom Area:

Once inside there is a bathroom immediately on the right, or follow the hallway of min width 840mm past a bedroom and to an open plan studio style bedroom (two x single beds) and kitchen. The apartment has low pile carpet throughout except for tiles in the kitchen area and bathroom. There is minimal space in the lounge/dining/bedroom area but furniture can be rearranged or removed to provide adequate circulation.

The studio kitchen is self contained with a fridge, stove, microwave and sink along one wall of the room. The bench height is 900mm with no knee space. There is a small pedestal table of 730mm height and 700mm height clear.

The two single beds can be joined to create a queen size, or moved to create more circulation space. They are 500mm high and there is 120mm under bed clearance.



Picture 3. Studio style bedroom and kitchenette of room 405

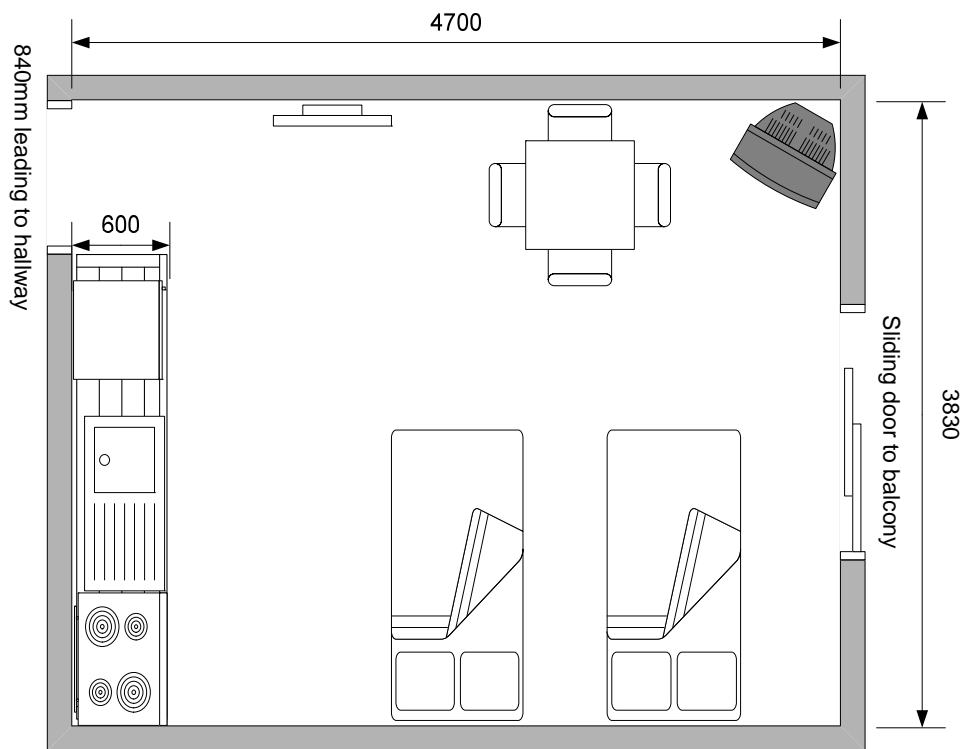


Figure 1. Floor plan of bedroom/living/kitchen area

Bedrooms:

There is a separate bedroom of dimensions 1450mm x 1280mm, between the bathroom and studio living area. It has two single beds (500mm height and 120mm under clearance) and the beds could be rearranged or removed to provide greater circulation space. The door clearance is 760 off hallway of approx 840mm wide. The door knob is 1020mm high.

Bathroom:

The bathroom has a corner shower, toilet and basin with small vanity. The door has 770mm clearance, a door knob of 1020 height and is inward opening with no automatic door closure. Circulation space is approximately 1200mm x 1200mm (see floor plan) and there is a mirror 970 – 1870mm in height.

The shower is a fiberglass corner unit with a 100mm hob, and at least 900mm clear opening with a shower curtain. There are no grab rails or hand held shower hose and the 'Crystal' style plastic topped taps are 1030mm high. Contact management ahead of time to arrange a shower chair.

The toilet requires a left hand or front on transfer with 600mm clearance to the right hand side. The seat height is 400mm, centre to side wall 535mm, front of bowl to rear wall 700mm. There are no grab rails. The washbasin has no underside clearance, the basin is 800mm high and the taps (2 x crystal) a depth of 400mm.

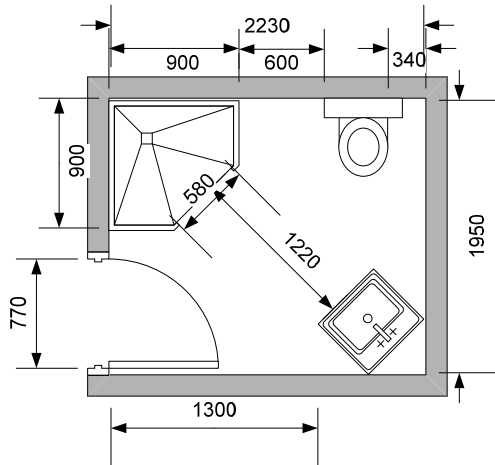


Figure 2. Bathroom floor plan in room 405



Picture 3. Circulation space around toilet



Picture 4. Shower access

Other Facilities:

Also available at the FCCC you will find an indoor pool, spa and sauna, laundry, secure ski and luggage storage, 24 hour security access and dining room and bar.

Emergency:

A documented emergency procedure is displayed on the door of each room. The alarm is audio. There is no use of the lift in the event of fire so an alternative evacuation plan would need to be discussed with Management.

Dining room:

Access to the dining room is via the reception or via an external door from the outside drop off area. This door is 930mm wide, lever handle at 980mm height and a self closure, outward opening. The dining room is low pile carpet throughout and it is large with areas of ample circulation space. Tables could be easily rearranged to increase circulation. The dining room has pedestal tables and round trestle tables all of 740mm high with 700mm knee clearance. There is a drinks bar 1100mm high and no knee clearance. Full table service is available.

The dining area has a unisex accessible toilet within the toilet facilities area. There is a no signage for an accessible bathroom until beyond the first bathroom door. The main bathroom door is 850mm wide, inward opening and with a lever handle of 1080mm height.

Falls Creek Country Club

There is an internal hallway 960mm wide and the accessible bathroom to the left. The door is 870mm clear, inward opening and with no door handle on the outside and D/hook handle on the inside. The room is 2080mm x 2000mm with adequate circulation space. The toilet is built to Australian Standards with right hand transfer, grab rails and accessible washbasin with single lever mixer.



Picture 5. Dining room



Picture 6. Accessible toilet