

Golden Leaf Motor Inn

186-188 Great Alpine Road
Myrtleford, 3737
Victoria

The Golden Leaf Motel offers 24 rooms, with one room having a reasonably good accessible bathroom. All the other rooms have a flat access shower, but no rails. A shower chair is available on request. Rooms are air conditioned, and have tea and coffee making facilities (with bar fridge). Adjacent to the reception area is a restaurant with good circulation space. It offers breakfast and dinner, reservations are necessary. There is also a swimming pool.



Picture 1. Main entry from road

Reservations:

Phone: 03 5752 1566
Fax: 03 5751 1620
Email: contact@goldenleafmotorinn.com.au
Web: <http://www.goldenleafmotorinn.com.au>
TTY: n/a

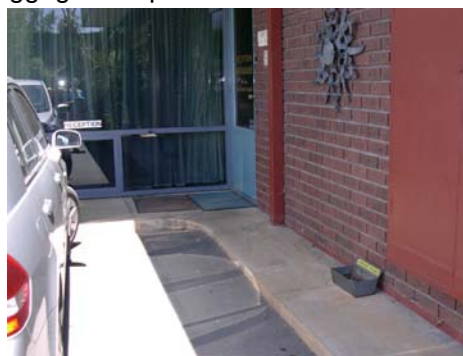
Transport:

The Motel is best reached by private car or coach. V-Line trains run to Albury or Wangaratta and there is V-line coach link up from Wangaratta to Bright, via Beechworth. The coach service uses an accessible vehicle. Contact V-Line 136 196 for information on availability, schedules and whether it stops in Myrtleford.

Reception Parking and Approach:

There are no designated accessible parking spaces, however there is ample parking next to the reception area. The coach set down area is along the adjacent service road, which is close to the reception. There is adequate circulation space to unload wheelchairs from the coaches or cars. Staff are very willing to assist with luggage if required.

The carpark surface is flat, concrete, and safe from hazards. There is good lighting, however there is no reception sign. A gutter of approximately 100mm needs to be negotiated to get up onto the path which takes you to the reception. The path is less than 1000mm wide and there are some ash trays placed intermittently along the walls encroaching on a clear path of travel. A ramp is available on request.



Picture 2. Entry to reception

Reception Entry and Counter:

The approach to the reception is flat, and then there is a threshold of 40mm high, 180mm deep at the doorway. A threshold ramp is available on request. The door width is 940mm. It is an outward opening door, of medium weight, and it self closes. The door handle is a knob, which is 1140mm high. There are 2 doormats to negotiate.

There is good circulation space within the reception area and the surface is wheelchair friendly (low pile carpet). The counter is 1140mm high and has knee space of 120mm deep.

Lighting is good. The night bell, which is found outside next to the door, is 1530mm high. To note, there is an internal central hallway that will take you to some of the rooms. It is flat access on low pile carpet. To get to the room with the accessible bathroom however you will need to go back outside.

Accommodation Approach and Entry:

From reception the room can be reached by going on the flat, concrete path, which travels along the front of the rooms. Another option is to cross the flat sealed car park, however a gutter will need to be negotiated again prior to entry.

The approach to the room is flat and there is circulation space of 1150mm deep in front of the door. There is a threshold of 40mm high and 180mm deep, and a ramp is available on request. The threshold is 35mm high internally. The door is 850mm wide. It is light, inward opening, and has knob handle 1120mm high. The door does not self-close.

Hanging space is available in a cupboard to the left of the door. It is 1150mm high. Floor surface is wheelchair friendly on low pile carpet.

There are no emergency exit signs. Audible fire alarms are installed.



Picture 3. Approach to room.

Living Area/Bedroom:

The room is open plan with a double bed, a two-seater couch, and a small table with two chairs. There is good circulation space, on low pile carpet. The majority of switches are at a good height, however some are within 500mm of internal corners. The light switch at the entrance is 1050mm high. The controls for the air conditioning are 1700mm high. There is a remote control for the television.

The couch is 440mm high, the chairs are 420mm. The tea and coffee making facilities are accessible. Maximum reach is 600mm over the bench. Bench height is 780mm, with an area with knee clearance of 630mm. The bar fridge and a cupboard are adjacent to this under the bench. There is good space beside the bed for transfers, and this can be increased if necessary by moving furniture. The height of the bed is 500mm and is on castors. The clearance is 120mm. There is little scope to raise the bed however because of fixed lights above it. Higher beds with longer legs are available on request. The height of the mirror is 1080mm-1980mm.

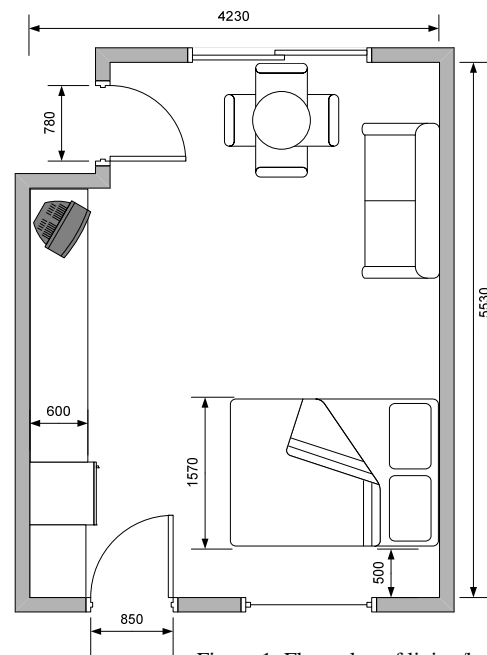


Figure 1. Floor plan of living/bedroom area

Picture 4. Living/bedroom area



Bathroom:

The door into the bathroom is 780mm wide. It is outward opening, and has a knob handle which is 1110mm high. The door is not heavy, and it does not self-close. There is good circulation space within the bathroom, and the floor surface is made from tiles. The mirror height is 1250mm-2000mm. The washbasin is 760mm high, 600mm deep, and has knee space 220mm deep. The Capstan lever taps are 830mm high.

Entry into the shower is flat. There is a horizontal grab rail 840mm high. The shower head is fixed and the Capstan taps are 1000mm high. A shower chair is available on request.

The toilet is a right hand transfer and is 460mm high. Centerline of the toilet to the nearest object is 430mm. Front of seat from the rear is 650mm. There are no rails.

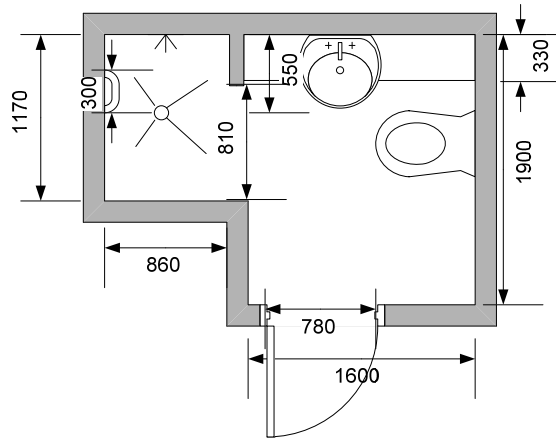


Figure 2. Bathroom floor plan



Pictures 5 & 6. Shower and toilet

Restaurant Entry and Counter:

The restaurant is adjacent to the reception area. Entry and counter information is the same as above.

Dining Room:

There is ample circulation space. Tables are 740mm high with a knee clearance of 700mm. They are of pedestal style.

Bathroom/Toilet:

There are separate male and female toilets adjacent to the restaurant. There are 2 stalls in each. The door widths are 750mm. They are light, inward opening, and self-close. The knob handles are 1140mm high. Floor surfaces are tiles. Mirror heights are 1380mm-1840mm. The washbasins are 790mm high, 430mm deep, with a knee clearance of 620mm high and 200mm deep the tap heights are 930mm.

Side transfers onto the toilet are not possible.