

High Country Motor Inn

13-17 Great Alpine Road
Bright VIC 3741

The High Country Motor Inn (HCMI) offers motel style accommodation on large grounds on the main road traveling into Bright. There is one room that has been set up with an open plan bathroom and flat access shower. Some equipment is also available on request. There is also a restaurant and bar on site with flat access but no accessible toilet facilities.

Reservations:

Phone: 03 5755 1244
Fax: 03 5755 1575
Email: contact@highcountrymotorinn.com.au
Web: www.highcountrymotorinn.com.au
TTY: n/a

Transport:

Transport to Bright is via private vehicle or V-Line services. V-Line trains run to Albury or Wangaratta and there is V-line coach link up from Wangaratta to Bright, via Beechworth. The coach service is an accessible vehicle. Contact V-Line on 136 196 for information on availability and schedule.

Parking:

There is no designated parking on the motel grounds but there is allocated parking for each motel unit and ample parking near the dining room. From the reception you will be directed to the parking bay adjacent to the unit of 2660mm x 4470mm. Half of this area is paved, the other half loose gravel. All other parking areas are flat and are on loose gravel (small stones).

Entry:

There is an undercover area outside reception that is signposted from the road. This area is flat, loose gravel and ample circulation space. The entry to reception has a small threshold lip of 10mm and is well signed. The door is an inward opening push door with no handle on outside and approximately 1040mm high D handle on inside. The door clearance is 770mm and the door is light to open and with a self closure. The after hours phone is placed at a height of 1500mm next to the door.



Pictures 1 & 2. Reception parking and entry

High Country Motor Inn

Reception:

The reception area contains adequate circulation space. It also leads to the bar and restaurant. The reception counter is 1300mm and has some knee clearance of 300mm. There is good lighting and signage. A potential hazard is that the main entry to the reception and restaurant has also a potentially high traffic flow for guests checking in. This may impact on circulation space and safety.



Picture 3. Reception counter

Accommodation:

From reception the path of travel to the accommodation is to exit the reception, and either drive vehicle (if arriving in private car) ahead through the grounds and then veering left, or continuing ahead to a concrete path that follows the line of buildings/rooms around to the furthest right hand side. Alternatively again, the path of travel directly to the room is across a flat, grassed area of approximately 30metres.

From parking space, disembark onto concrete and make way to the room entry on the left hand side of the park. There is a short threshold ramp 210mm long of 18.5% gradient through a 770mm doorway, with inward opening door, door knob with lock at 970mm height. The entrance hall narrows down to 710mm leading to bedroom ahead and tea/coffee facilities and bathroom to the right. The floor is tiled in the bathroom and entry hall and low pile carpet elsewhere. No emergency exit signs are shown but there is a second entry/exit at the opposite end of the bedroom/lounge area. The second entry is a sliding door of medium weight. The door handle is at approximately 1100mm and the clearance is 900mm. There is a threshold of 40mm internally and 70mm externally.



Picture 4. Parking and entry to motel unit

Bedroom/lounge area:

The living area consists of one double bed, one single bed, one two seater couch and one small table. The tea/coffee making and hanging space are in a separate room that leads to the bathroom and would be difficult to access due to limited circulation space and no under bench clearance. There is adequate circulation space in the living area and furniture could be easily moved to provide more space. Most switches are within clear reach other than those behind the double bed. There is a television and the remote control for this and the air conditioner is housed in a box at 1450mm high. There is a mirror at 810mm – 1760mm. The main bed is 600mm high and there is clearance underneath of 130mm. The bed could be raised on blocks if necessary.



Picture 4. Bedroom/Living area and second entry

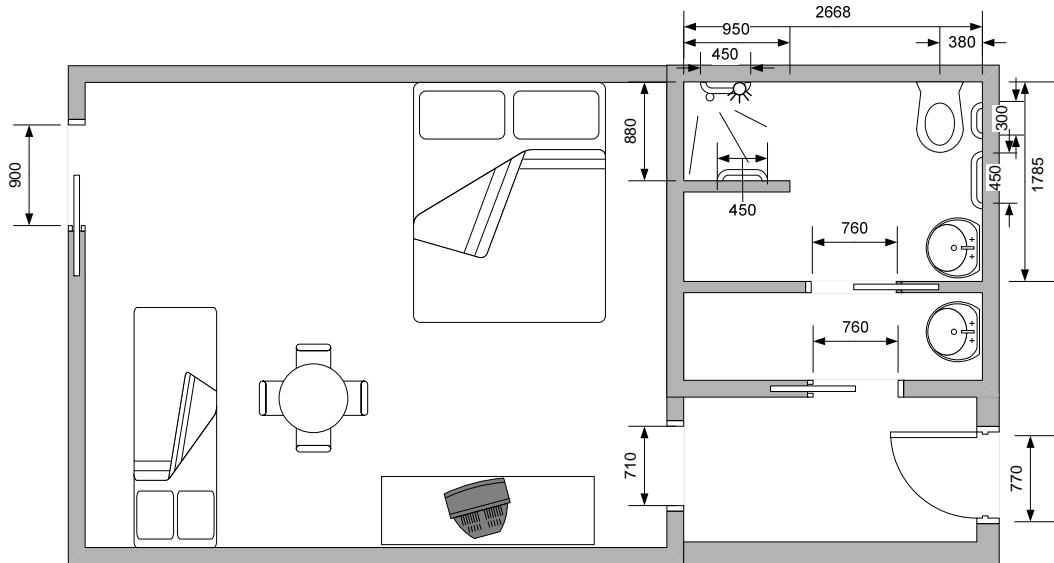
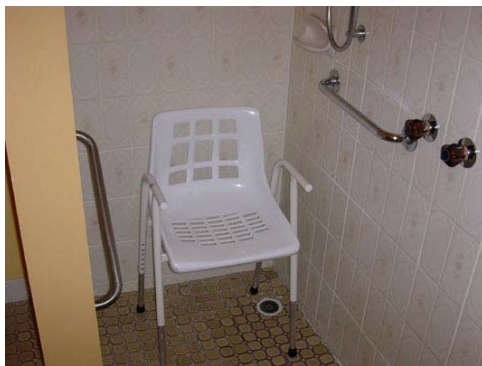


Figure 1. Full motel unit floor plan

Bathroom:

The bathroom is situated to the right of the main entry through the kitchenette area. Access is via a cavity slide door (opening 760mm) with recessed handle 1000mm high. The bathroom does not have clearance of 1500 x 1500mm as shown in the floor plan. The floor is tiled and mirror height is 1100 – 1670mm. The washbasin is 760mm high, underside clearance to 630mm and a depth of 400mm. There are two lever taps at 840mm high. The shower wet area is 950mm x 880mm and is free of hobs, steps or floor track. There is no curtain and three sides are closed in by walls. There is a handheld shower on a slider rail and a 450mm oblique rail on the opposite wall to the taps (see floor plan). The rail is 640mm from the floor at its lowest point and 950mm from floor at highest point. There is a 450mm horizontal rail next to the taps at a height of 970mm from floor. The height of taps (plastic crystal style) is 1000mm. An adjustable height shower chair and transit mobile commode is also stored in the bathroom.

There is sufficient space beside the toilet for a left hand transfer. The seat height is 420mm, centerline to wall is 380mm and front of seat to rear is 640mm. There is a 300mm horizontal grab rail next to the toilet at 760 high and a 450mm oblique rail from 540mm to 750mm high. The flush for the toilet is 1200mm high.



Picture 5 & 6. Shower and toilet layout

High Country Motor Inn

Other Facilities:

Also available at the High Country Motor Inn you will find an outdoor recreational pool, a sauna, restaurant and bar, wireless internet, and a conference room.

Emergency:

A documented emergency procedure is displayed on the door of each room. The alarm is audio and a Warden will seek to evacuate guests to safe refuge. Each building has a number of emergency entry/exit points.

Picture 7. Swimming pool

