

Howman's Gap

RMB 2587 Bogong High Plains Rd
Falls Creek VIC 3699

Howman's Gap Alpine Centre is a YMCA run facility approximately 4 kms from Falls Creek. It offers accommodation for up to 160 people and has 4 wheelchair accessible bedrooms and 4 partially accessible bedrooms. It offers 2 accessible bathrooms near the accommodation and 2 accessible toilets near the dining and recreation areas. All meals are catered for.

Accommodation can be booked as an individual or group. Howman's Gap also offers recreational camps.

Disabled Wintersports Victoria base their winter sports camps at Howman's Gap.

Reservations:

Phone: 03 5758 3228
Fax: 03 5758 3527
Email: admin@howmans.com
Web: www.camps.ymca.org.au
TTY: n/a

Transport:

Transport is available via private car and coach. Falls Creek Coaches pass by daily and if prearranged can drop passengers at Howman's Gap. Public transport to the region is via V-line train to Albury and coach to Mt Beauty.

Parking:

There is currently no designated parking. On request parking can be arranged in the drop off areas close to the accommodation. Upon entering Howman's follow the signs down the hill to the drop off area. At the bottom of the hill the road opens up to a large turning/drop off area. There is ample space for coaches and cars, and assistance with luggage is available upon request. The reception area is the first building on the right.

The main parking area is mostly flat and is situated approx 200m back up the hill. Access back to the main camp area is via two flights of approximately 10 steps or via the steep entry road.

Picture 1. Reception and drop off area



Entry:

The path of travel to the accommodation is to follow a concrete path at the point of the drop off area towards an under cover walkway. This section has a handrail at 1040mm high. The main entry path is 1140mm wide and has a gradient of approximately 6.3% for about 8m. Here the path then intersects to an uphill path to the left that leads to the dining room and a downhill path to the right that leads to the accommodation. Follow



Howmans Gap

the path down hill to the right for approximately 6.5m at a gradient of about 8%. The path is about 1200mm wide and has a black rubber matting surface. There is also a handrail of 1020mm height that continues for the length of the path. At 6.5m turn right again for a flat section of path for approximately 5m to the door of the accommodation.

Picture 3. Path of travel to accommodation



The path of travel to the dining room is to turn left at the intersection and a concrete path continues for approximately 13m at 4.6% gradient uphill. Immediately in front of the door the path levels out providing ample circulation space for opening the door.

Picture 4. Entry to dining room



Reception:

The reception office is on the right hand side when approaching the drop off area. There is a clear undercover landing outside office door and a single step of 130mm into the building. The door is inward opening and 770mm wide with lever door handle at 1200mm high. The door is not heavy and does not have a self closure. There is adequate circulation space once inside the reception area on a low pile carpet. An accessible counter is not available (1080mm high) but there is ample clear area to the left hand side. There is good lighting and signage.

Picture 5. Reception Office



Accommodation:

Entry to the accommodation building is via an inward opening push door, with D handle inside at 1040mm height. Door is self closing and has clearance of 860mm. The hallway is 1330mm wide.

The accommodation has two wings that replicate each other. Rooms in the A wing are described due to proximity to flat entry and accessible bathrooms. However rooms in B wing could be used if more accessible accommodation required. There is low pile carpet throughout the accommodation building except for wet areas. All beds described (whether bunk or standard single) are the same dimension of 940 x 1940mm and are a fixed structure and therefore can not be moved or raised.

Dining

At the entry to the dining area there is a flat landing that is approximately 1330mm wide. The first door is a heavy outward opening door with self closure. The D handle is at approximately 900mm and door width is 960mm. Moving forward onto low pile carpet there is a second door to the right that again opens outward, D handle at about 900mm and door width of 860mm. This opens up into a large communal dining area.

There is low pile carpet throughout the dining room except for food service and wash up areas. There are approximately 17 trestle tables in the dining area each seating about 10 people. The tables are 700mm high with underside clearance of 650mm. There is ample circulation space at the end of each table, and more space could be offered between tables if furniture rearranged.

The food service area has adequate circulation space but assistance might be required to collect food from counters. The cutlery is at 970mm high. The servery is a minimum of 920mm high. The tea/coffee area is at 870mm high with a further 560mm reach required for tea/coffee dispenser. The salad bar is 850mm high and requires about a further 300mm reach to the food.



Picture 6. Dining room

Lounge Area:

The lounge area is adjacent to the dining room with single door of 760mm width, opening into the lounge and handle at about 1000mm high.

There are multiple double couches in the lounge area with ample circulation space around the room. The floor is again low pile carpet. The lounge seats are approximately 440mm high. There is a TV in the lounge for DVDs/Videos only (no reception) and controls at a height of approximately 700mm, (also has remote control).

Travelling through the lounge area leads to another door with 760mm opening. Out into the passageway there are two unisex accessible toilets on the left hand side. They are well signed and offer a toilet, grab rails, basin and hand dryer. Keeping to the left leads to double doors, heavy to open with self closure and D handle at approximately 1100mm high. Clearance about 800mm through single door leading to a games/recreation room. Set up for general use with ample circulation space between is an air hockey table, table tennis table, table soccer, pool table and a TV/Video.

Picture 7. Lounge area



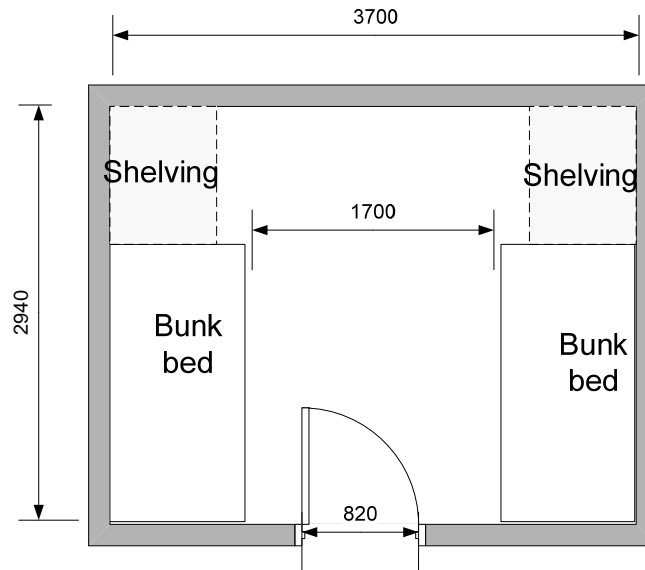
Bedrooms:

Once through the entry point to the accommodation building, follow the hallway pass the accessible bathrooms to the right and a further approx 10m to rooms A15 and A16 on the right hand side. These rooms are replicated in the 'B wing'.

Door width is 820mm with lever handle at 1150mm. The door is inward opening and has a self door closure. It is heavy to use. There is adequate circulation space in the room with 1700mm between the two sets of bunks. There is low pile carpet throughout. The bottom

Howmans Gap

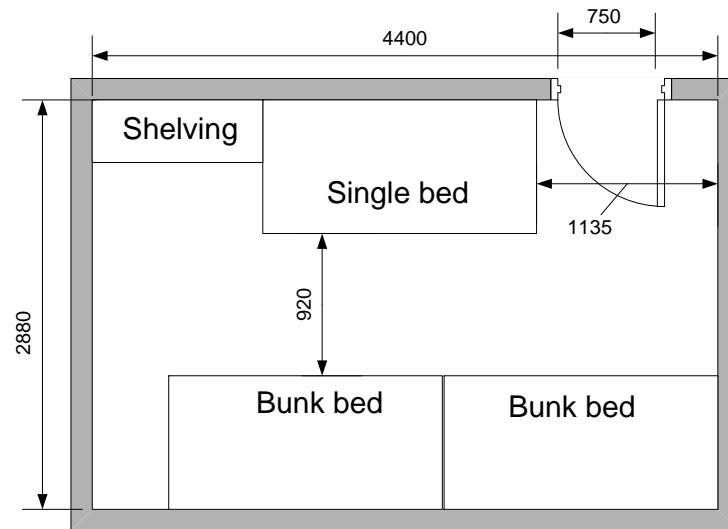
bunk is 450mm high with under bed clearance of 300mm. The beds cannot be moved or raised as fixed to the floor.
There is hanging space available in open shelves at 1100mm. There is a mirror at 1300 – 1800mm at foot of bed.



Rooms A15/A16

Figure 1. Floor plan of rooms A15/A16/B15/B16

Room A3 has a different configuration but also lends well to wheelchair accessibility. Following entry to accommodation building this room is on the left hand side after approximately 5 metres and replicated in the 'B wing'. As the hallway widens to a meeting area, room A3 is immediately to your left turning 180°. The door is inward opening with self door closure. The width is 750mm and the lever handle at 1150mm high. There are two bunk beds along the far wall and one single bed on the near wall. At a minimum there is 970mm clear between the beds. Hanging space is available at approximately 1100mm high.



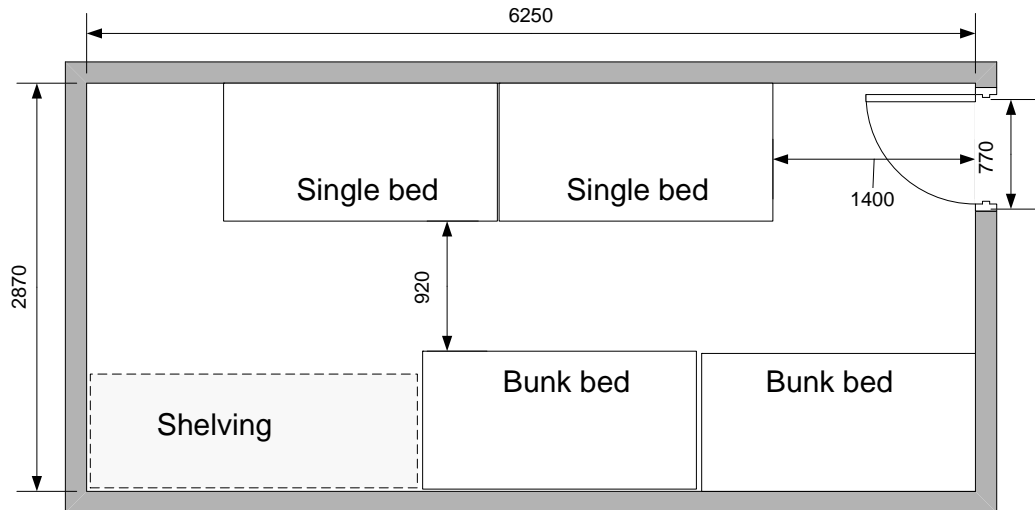
Rooms A3/B3

Figure 2. Floor plan of rooms A3/B3

Howmans Gap

Another appropriate configuration is room A5. After entry to accommodation building continue approximately 10m to room A5 on the left hand side. This room is replicated in the 'B wing'.

The door is inward opening with self door closure. The width is 770mm and the lever handle 1150mm high. Once inside the room there is 1400mm clear to the foot of a single bed. This room offers two single beds on the right hand wall and two bunks on the left hand wall. At a minimum there is 920mm clear between the beds. There is hanging space available at approximately 1100mm high at the foot of the bunks.



Rooms A5/B5

Figure 3. Floor plan of rooms A5/B5

Bathroom:

There are two accessible bathrooms in the 'A – wing' that are a mirror image of each other. The door is a push door, inward opening, self door closure, internally a D handle of approximately 1100mm height. There is adequate circulation space within the bathroom and it has a non slip lino floor. The room offers a mirror 990 – 1860mm in height and hand dryer 1050mm height. The washbasin is 785mm high, underside clearance 600mm, 2 x capstan taps at 865mm height.

The shower area is flat and self draining of circulation 1050 x 1050mm with shower curtain and fold down bench. There is a handheld shower, vertical grab rail (1200 – 1950mm) and 400mm horizontal rail 800mm high. There are two capstan taps at height 960mm. The fold down slatted seat is 1000mm long and 400mm deep and folds down to a height of 450mm.

The toilet offers sufficient circulation space for a left hand transfer. The seat is 450mm high, centre of toilet to wall 450mm and front of seat to rear 830mm. There is an 800mm horizontal side rail (800mm high) with oblique portion of 700mm to height of 1150mm. There is also a rear rail of 300mm at 800mm high.

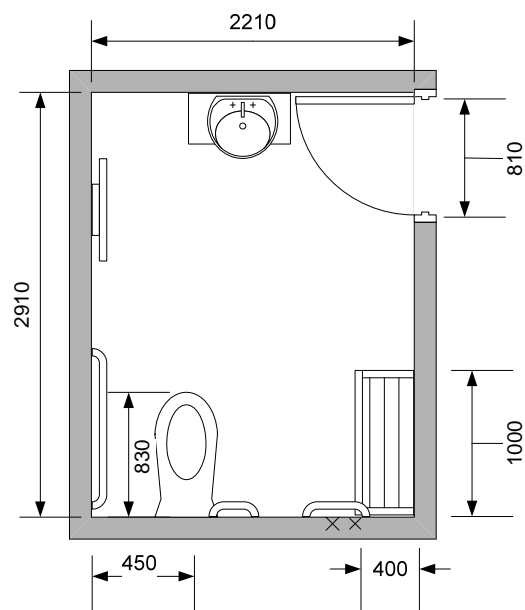


Figure 4. Bathroom Floor Plan

Howmans Gap



Picture 8/9. Accessible bathroom facilities

Other Facilities:

Also available at Howman's Gap is a drying room (accessible) and multiple outdoor activities. Individual needs should be discussed with the centre coordinators to ensure activities are appropriate.

Emergency:

A documented emergency procedure is displayed on the door of each room. The alarm is audio and a Warden will seek to evacuate guests to safe refuge. The accommodation building only has one accessible entry/exit point. The dining room has two accessible entry/exit points.