

Rundells Alpine Lodge

Lot 18, Big Muster Drive
Dinner Plain 3898 Victoria

Rundells Alpine Lodge (previously Crystal Creek) has several facilities available to cater for accessibility needs. One bedroom in the lodge has an ensuite with accessible facilities. There is flat access to the main bar area, an accessible bathroom in the main dining room and an accessible toilet off the main bar.

Reservations:

Phone: 03 5159 6422
Fax: 03 5159 6500
Email: info@rundells.com.au
Web: www.rundells.com.au
TTY: n/a

Transport:

Transport to Dinner Plain is via private vehicle or private coach. Hoys operates regular services but does not have an accessible vehicle.

Transport to Bright is via private vehicle, private coach or V-Line coach.

V-Line trains run to Albury or Wangaratta and there is V-line coach link up from Wangaratta to Bright, via Beechworth. The coach service uses an accessible vehicle. Contact V-Line 136 196 for information on availability and schedules.

Reception

The main reception for guests staying at Rundells is via a drive through drop off area on the corner of Big Muster Drive. There are several steps leading to reception. For alternative flat access the reception area can be accessed via the rear entry of the property (also from Big Muster Drive) and then through the main bar. This path of travel is described below.

Parking

There is no designated parking area at Rundells. The preferred parking (which is marked for guests) is at the rear of the property (i.e. not at the main reception area) as this is closest to the level entry to the building. To find the parking area travel further along Big Muster Drive from the main reception and then take the first right past the outdoor seating area. Continue another 20m and there are several parking spaces on the right.



Picture 1: Car park and rear entry

Rundells Alpine Lodge

Entry

The ground surface in the car park area is grass with regular, small concrete 'blocks' recessed throughout the parking and outdoor seating area. Whilst these are useful in winter with snow/ice/water coverage, in summer they present potential hazards and an uneven surface. The clearest path of travel from the parking area to the entry would be to return back down the concrete road until the corner of Big Muster Drive. Here a clear path leads directly to a ramped entrance. It is also possible to move from the car park to the entry on a shorter route but outdoor dining furniture will need to be negotiated. The gradient of the clear path from the road is approximately 1.3% downwards for around 10m. Here a wooden ramp with black rubber matting cover rises from the path for 3800mm at a varying gradient of 2.6 – 4.6%. This steepens to 8.8% for 1100mm before a 20mm threshold at the door. The door opens outward, d handle at 1000-1150mm high and 770mm clearance.

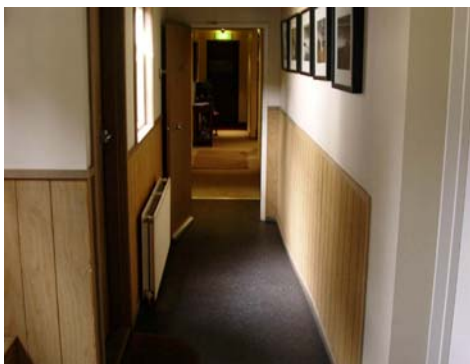
Once inside the building the floor surface is low pile carpet and there is adequate circulation space. If accommodation is required or a reservation already made, enquire at the main bar directly in front upon entry. They can direct you (if necessary) to the reception area, approximately 5 metres further to the right and through a dog legged hallway.



Picture 2: Entry to building (not main reception)

Accommodation

The path of travel to the accommodation from the main bar is to cross the room immediately from the entry point to the start of a long corridor. This corridor is approximately 10m long, is a minimum of 770mm wide, mainly linoleum flooring and has two sections of down sloping ramp – the first of 2000mm at 8.6%, the second of 2400mm at 8%. At the end of the corridor where the floor surface turns to carpet, turn to the right and a further 5 metres of travel on level surface leads to the room entry. (Room number 1) The door to the accommodation opens into the room with a door knob at 1100mm and 760mm clearance. The door is medium weight with a self closure. A wedge is provided to hold the door open. There is hanging space behind the door at 1500mm high and then further into the room in an open cupboard the hanging space is at 1140mm. The room is carpeted throughout and the emergency exit sign is clearly lit in the outside hallway.



Picture 3: Path to accommodation



Picture 4: Room entry

Rundells Alpine Lodge

The room has a king sized bed, ensuite, TV, tea/coffee facilities and a small window alcove/lounge.

Tea and coffee facilities are at 890mm high and 500mm reach. There is no under bench knee clearance. The TV remote control was stored high at the time of assessment but could be moved to within seated reach if requested.

There is adequate circulation space in the room at the base of the bed. The bed (king size) could be moved to allow greater clearance to one side (up to 1000mm), is 550mm high and is on castors with 60mm under clearance.



Picture 5: Hanging space, tea/coffee facilities



Picture 6: Bed

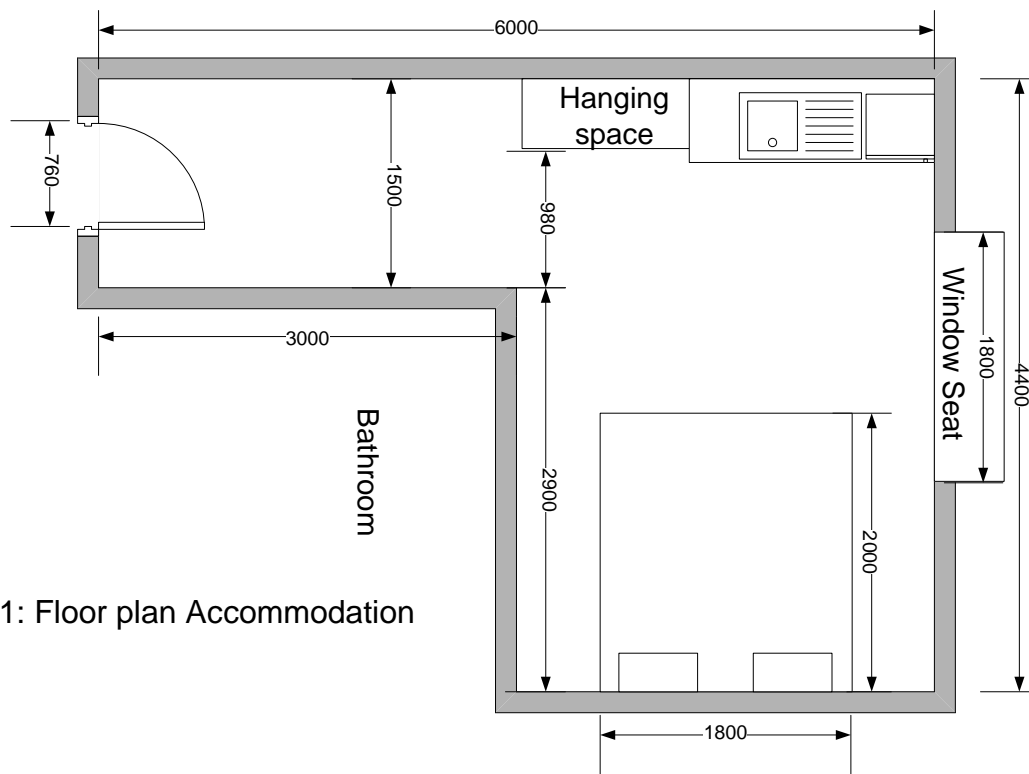


Figure 1: Floor plan Accommodation

Rundells Alpine Lodge

The ensuite bathroom has door clearance of 760mm through an inward swinging door with door knob at 1100mm high. There is minimal circulation space within the bathroom but does provide up to 1200mm² clear. The flooring is a mix of linoleum in the general bath area and tiles in the shower area. There is a mirror is at 960 – 1860mm high above the basin. The basin is 840mm high, 670mm underside clearance and 200mm underside deep. The basin has square style taps that are 400mm deep and 900mm high.

To the right of the room is the shower area of approximately 900 x 900mm with a curtain. There is a metal track joining the tiled area to linoleum around the perimeter of the shower. This track is low profile of around 10mm high. There is a vertical grab rail running from 760 – 1920mm high and a horizontal continuous grab rail 900mm high running through the corner of the shower at a total of 1400mm (700mm on each wall). There is no hand held shower hose. The taps are square style and 1050mm high. The shower has a fold down padded bench with dimensions of 480mm high, 470mm wide, and 330mm deep.



Picture 7: Shower

The toilet offers a right hand transfer and whilst there is circulation space next to it, it is some what impeded by the floor track around the shower wet area. Toilet seat height is 430mm, centreline to nearest object 430mm and front of seat to rear 700mm. There is a continuous horizontal grab rail at 800mm high spanning 900mm across the rear of the toilet to 700mm on the side and then extending a further 600mm at an oblique angle to 1100mm high.



Picture 8: Toilet

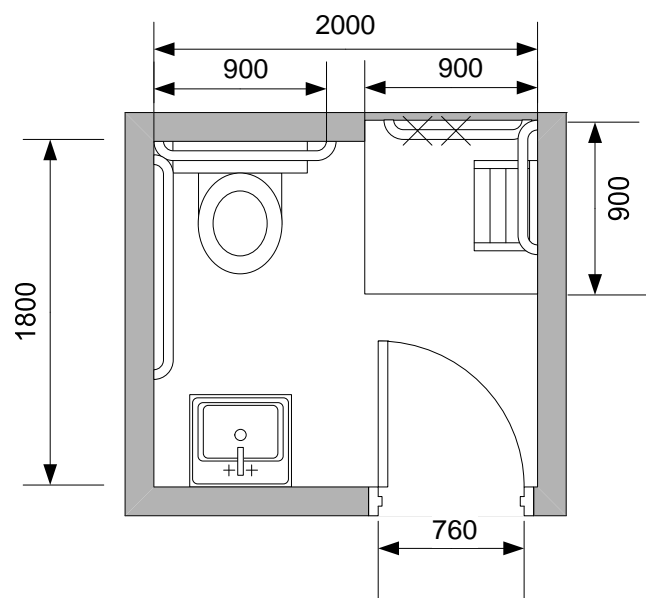


Figure 2: Floor plan accommodation bathroom

Rundells Alpine Lodge

Other facilities

Bar area:

The bar/lounge area offers an array of seating arrangements including couches, and bar stools. There is ample circulation space around the bar area and between seating options.

Both the general bar area of Rundells and the dining room have ready access to an accessible bathroom for patrons. From the bar area the path of travel is towards the main reception area as described previously. Instead of turning to the left for the reception, turn to right and there is a clear path to the signed accessible bathroom. The door opens inward with door knob at 1100mm and clearance of 760mm. There is adequate circulation space within the bathroom, flooring is tiled and there is a mirror at 1100 – 1800mm high. The washbasin is on the right wall, 780mm high, 650mm underside clearance and 160mm knee depth clearance. 2 x lever taps are 270mm deep and 860mm high.

The toilet is in the far right corner and offers a left hand transfer. Seat height is 430mm, centreline to wall is 420mm and front of seat to rear is 700mm. A continuous grab rail at 800mm high exists for 850mm at toilet rear, 700mm along left wall and rises 300mm at an oblique to 1000mm high.

The bathroom also has a baby change table that folds down long ways into the room to a height of 800mm.



Picture 9: Bar area



Picture 10: Toilet in main bar

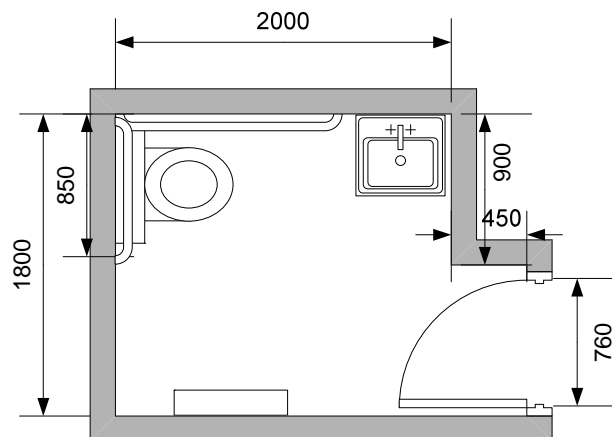


Figure 3: Bathroom layout off main bar

Rundells Alpine Lodge

Dining room

Graze is the restaurant name at Rundells. It offers a gourmet menu specialising in local produce. Mains are priced between \$17.50 and \$39 and the menu is displayed at the main entry at a height of around 1000mm. The entry door stays open and there is clearance of 990mm. The room is carpeted throughout, tables 760mm high with 720mm underside clearance and there is adequate clearance between tables.



Picture 11: Restaurant

The toilet is situated in the far left corner of the restaurant, (almost directly opposite the entry from the bar) but is not signed as accessible. The first door pulls outward offering 750mm clearance and door knob handle at approximately 900mm. It is a medium weight door with self door closure. This leads to an airlock area (carpeted) with sufficient passage space through to a second door (this time signed) leading to the accessible toilet. Pushing inwards, this door offers 820mm clearance and a hook handle and lock on inside at 1100mm. This door is also self closing and heavy to push open. The toilet area is 2440 x 1600mm with a large mirror at 1080 – 2080mm. There is adequate circulation space within. The basin is 850mm high, with 720mm underside clearance and 140mm knee depth clearance. The two capstan taps are 300mm deep and 920mm high. The toilet offers a right hand transfer, is 430mm high, centreline to wall 500mm and front of seat to rear 860mm. A single 300mm horizontal grab rail is to the left rear of the toilet and a 900mm horizontal grab rail at 800mm high. A third rail 900mm long is at an oblique from 800 – 1230mm.

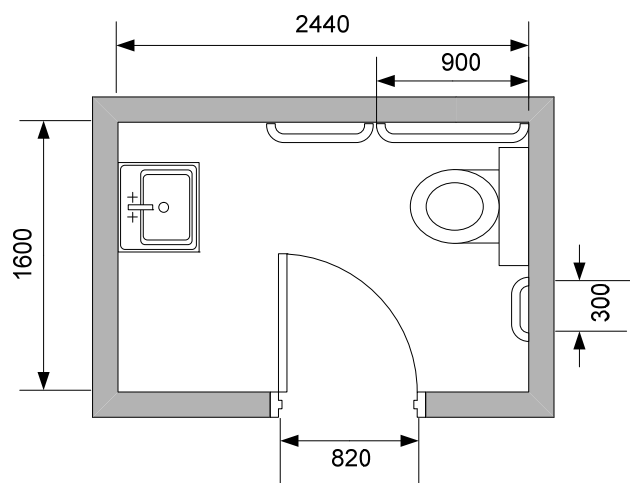
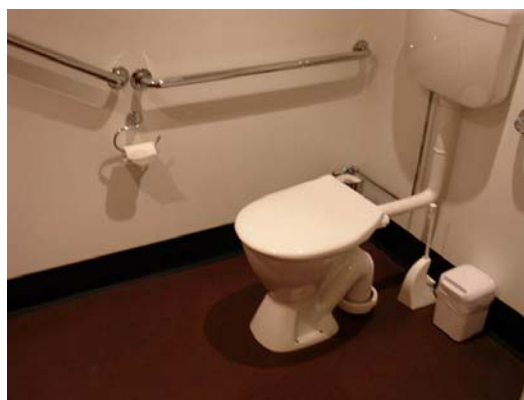


Figure 4: Restaurant bathroom



Picture 12: Restaurant bathroom