

## **Sandy Creek Retreat**

3744 Midland Highway  
Lima South VIC 3673

Sandy Creek Retreat offers individual unit accommodation in an open park style setting overlooking Lake Nillahcootie. Units offer some accessibility with fair circulation space in the living areas. The bathroom facilities are not fully accessible and would suit the more ambulant user.

### **Reservations:**

Phone: 03 5768 2404  
Fax: 03 5768 2581  
Email: sandycrk@bigpond.com.au  
Web: n/a  
TTY: n/a

### **Transport:**

Transport is only available via private car.

### **Parking:**

Parking is available at either reception or next to each unit, however reception is not accessible. The owners are happy to meet guests at the unit to complete check-in. Please call ahead to make arrangements. If you need the wheelchair ramp (for the front door step) please arrange at this time. The carport at the unit is concrete and spacious (5.8m x 3.6m).



Picture 1: Carport

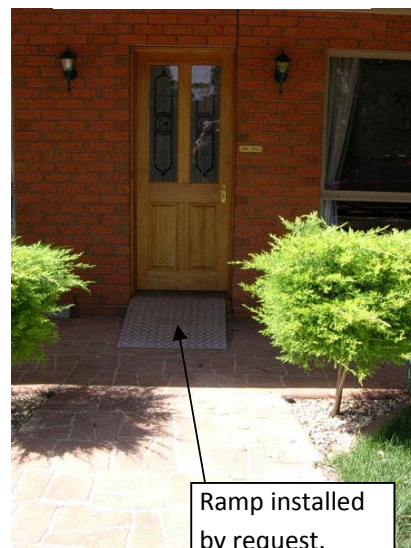
### **Accommodation:**

#### **Entry:**

It is only about 5m from the carport to the front door along a wide (1.7m) and flat paved path.

There is a step (approx. 200mm) at the front door, however the owners have a purpose built ramp (900mm, 17% gradient) that can be put in place if requested.

The front door is a fairly heavy inward opening door. The opening is 765mm wide. The handle is 1100mm high from the outside ground level or 900mm from floor level.



Picture 2: Entry

**Communal Kitchen/ Dining/ Lounge Area:**

The living area is reasonably spacious with good circulation space between furniture. The floors are a smooth tiled surface. All switches are at 1190mm high while the remote for the air conditioner is stored at 1300mm height.

The kitchen benches are 890mm high. The gas cook top is on top of the bench with the first burner 190mm from the front of the bench. The microwave is on top of the fridge at a height of 1400mm. The sink tap is 485mm back from the front of the bench and 100mm higher than the bench. There is a dishwasher at floor level.

The seat height of the lounge chairs 420mm.

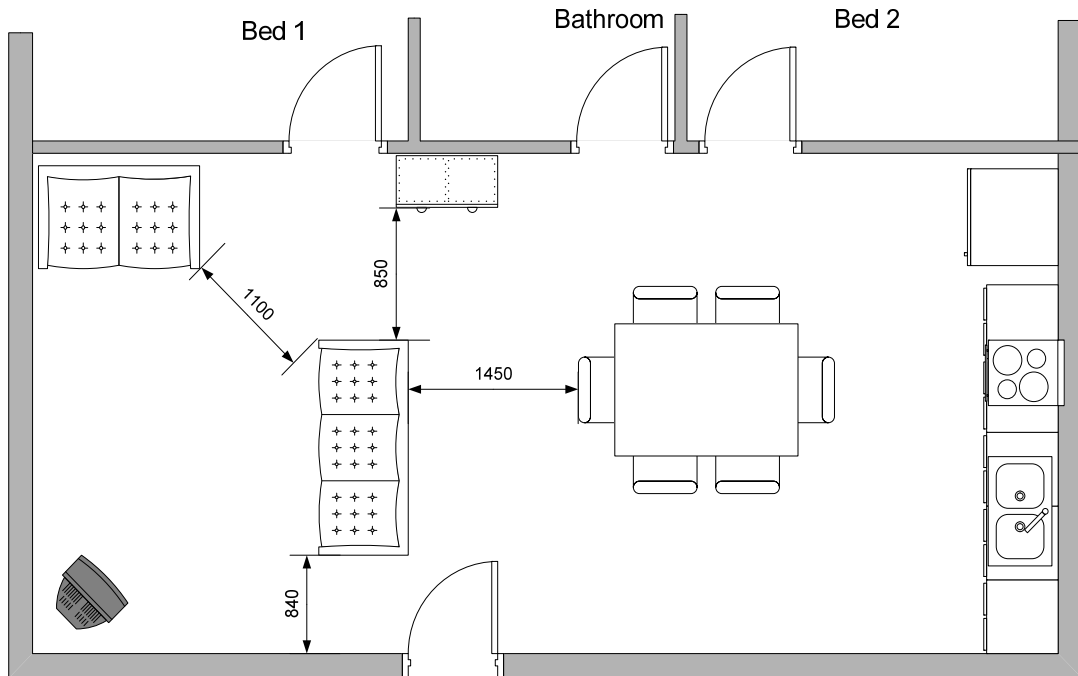


Figure 1: Living Area



Picture 3: Living Area

**Bedrooms:**

The door to Bedroom 1 is 780mm wide. The door lever is 900mm high and is a hooked lever type. The floor is covered with a low pile carpet. The bedroom is not overly spacious with fairly limited circulation space, although there is sufficient space at the side of the bed for transfer. The bed height is 490mm which could be raised but you would need to bring your own castor blocks. As is, the space under the bed is 230mm.

The clothes hanging rail in the wardrobe is at 1640mm high.

Bedroom 2 has a slightly narrower door at 770mm wide with a hooked lever handle. It has two bunk beds with reasonable space between them.

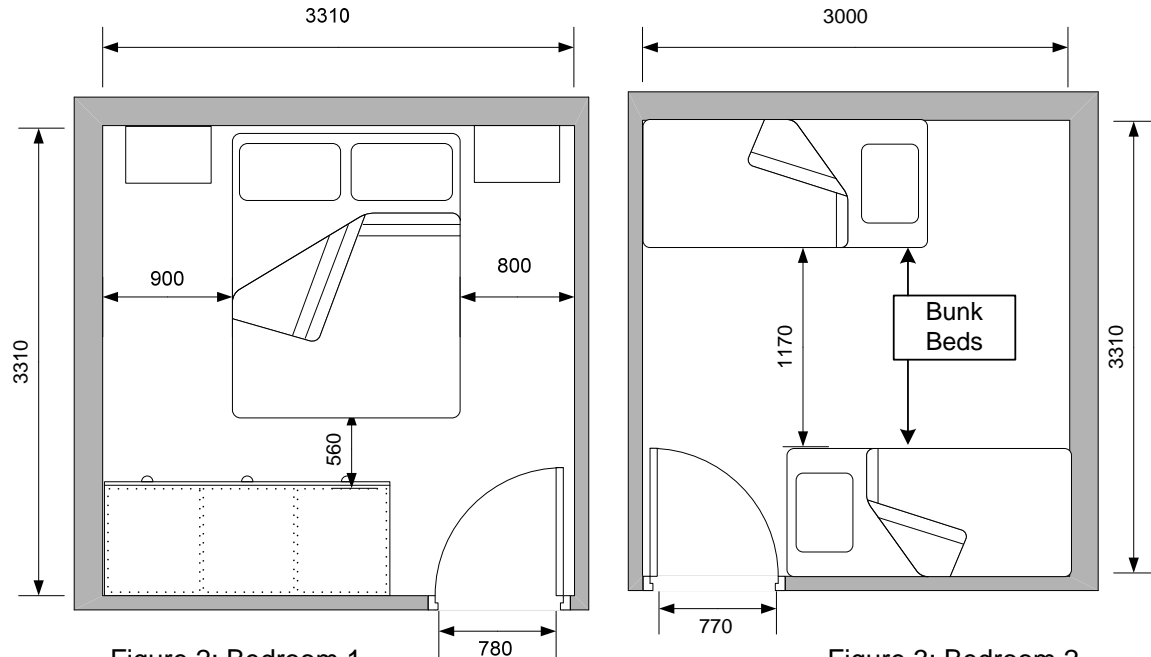


Figure 2: Bedroom 1

Figure 3: Bedroom 2



Picture 4: Bedroom 1

## Sandy Creek Retreat

### Bathroom:

The inward opening door to the bathroom is 770mm wide and has a hooked lever type handle 900mm high. Just inside the door there is only a 670mm gap between the vanity and a corner storage room. Once inside however there is reasonable circulation space.

The floor is a smooth tiled surface. The basin is 900mm high with the capstan taps another 80mm higher and 275mm from the front of the bench. The mirror is behind the vanity with a minimum height of 1150mm.

The shower is not accessible with a 490mm wide door and a 100mm high lip at the door. There are no grab rails and it has a standard shower head. The taps have capstan handles at 1040mm high.

The toilet is 400mm high. The side grab rail is between 550 and 940mm high.

There is no rear rail.

The front of the toilet seat is 750mm from the back wall and the centreline of the toilet is 460mm from the side wall. There is good space beside the toilet for transfer of 1690mm.

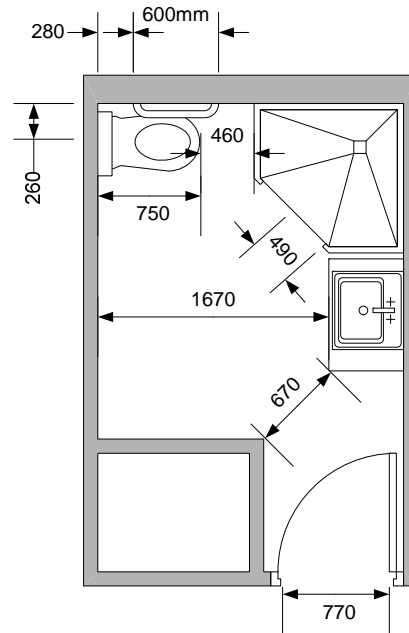


Figure 4: Bathroom



Picture 5: Toilet



Picture 6: Bathroom Entry

### Emergency:

There is a smoke detector but it is only audio with no visual alert.

There is only one entry/exit point at the front door. Exit from the site would be via the driveway.