

### **5 Star Adventure Tours (5SAT)**

3/104 Gavan St  
Bright VIC 3741

5 Star Adventure Tours are predominantly a tour company that will personally cater for a group's needs and interests. Whilst their activities are not specifically 'accessible' they aim to cater to individual or group needs wherever possible. This includes but is not exclusive too, kayaking trips, camping tours, and sunset dinner trips. The 4 wheel drive vehicle used for tours is not wheelchair accessible but again the company operators are willing to explore options to assist participation. The purpose built vehicle can take up to 10 passengers. The front pair of seats has the most circulation space next to it.

5 Star Adventure Tours also operates a café/wine and cheese bar at their shop front in the town of Bright. This café also offers an accessible toilet.



Picture 1 & 2. Tour vehicle and seating

#### **Reservations:**

Phone: 03 5759 2555  
Fax: 03 5759 2655  
Email: [admin@5staradventure.com.au](mailto:admin@5staradventure.com.au)  
Web: [www.5staradventure.com.au](http://www.5staradventure.com.au)  
TTY: n/a

#### **Transport:**

Transport to Bright is via private vehicle, private coach or V-Line coach. V-Line trains run to Albury or Wangaratta and there is V-line coach link up from Wangaratta to Bright, via Beechworth. The coach service is an accessible vehicle. Contact V-Line on 136 196 for information on availability and schedule.

5 Star Adventure Tours may be able to pick up clients from Albury, if then traveling on for a camping tour. This should be negotiated with the tour operators.

## 5 Star Adventure Tours

### Parking:

There is no designated parking. General parking is available on the street parallel to the shop front however there are a number of street planter boxes that impinge on potential circulation space. The path of travel could be directly onto the foot path (avoiding the planter boxes), or via the road ahead to the first intersection where there is a drop gutter that leads up onto the concrete footpath. There are tactile pavers at this drop gutter.

Picture 3. Parking



### Entry:

From the road turn left back along the footpath (with a cross fall gradient of 3.5%) back to the shop front. At the entry there is a slight gradient of 5.5% for approximately 500mm immediately in front of the entrance door. The door is inward opening of medium weight with a self door closure. The door width is 830mm clear with the door handle (hook) at 950 – 1250mm in height. There is a door mat inside the door providing a minor potential hazard. Otherwise the flooring is low pile carpet.

Picture 4. Front entrance to shop/café



### Reception:

Passing through the door, the path of travel remains at 830mm wide until past a large wine barrel on the left. Here at the front of the shop is The Tour Desk which is the reception for 5 Star Adventure Tours. The counter is 950mm high, with underside clearance of 900mm and knee depth clearance of 200mm. There are several chairs and another wine barrel positioned along this counter that would need to be moved to allow space for a wheelchair. There is adequate circulation space between these chairs and the barrel at the entrance. Lighting for the shop front comes from street lighting and appears adequate. Signage for the café is effective with several signs and a sandwich board. Signage for 5 Star Adventure Tours is comparatively small and does not stand out.

Picture 5. The Tour Desk



### Accommodation:

Camping tours are one of the activities that this company offers. They use large '4/6 person' dome tents with internal floor space of 3 x 3metres and internal height of 2.1metres. The beds are army stretchers with an additional mattress. They aim to make the camping experience '5 star' and the tents and beds are all set up for participants. Porta-potty toilets are taken on all overnight camps.

**Dining / Café / Wine Bar:**

The café has several tables of various sizes. The longer tables have 4 corner legs offering good under table clearance at the middle positions. Table heights are 780mm and underside clearance 700mm. There is clear knee depth of 180mm. There is approximately 830mm between tables.

The Wine Bar Counter has two counter levels. The lowest is 1030mm high with knee depth clearance of 500mm. The higher counter is 1120 – 1170mm with 130mm knee depth clearance.

The wine bar is licensed and there are menus at the table. The café offers light meals from breakfast through to the evening. They do not have a large print menu available.



Picture 6. Wine bar and cafe

**Bathroom:**

There is an accessible toilet at the rear of the shop however there is no signage indicating as such. Travel past the left hand side of the wine bar down a hallway of 960mm width. Immediately in front of the toilet the hallway opens up but circulation space is impacted on by storage boxes and a trolley. The toilet door opens outward, is light to open with no self closure. Door width is 780mm and the hooked lever handle is 930mm high. There is not adequate circulation space inside the bathroom, ie there is not 1500mm x 1500mm clear space. The floor is tiled and there is a mirror 1010 – 1920mm high. The washbasin is 780mm high, with depth of 200mm and clear space underneath of 600mm. The lever mixer tap is a height of 900mm.

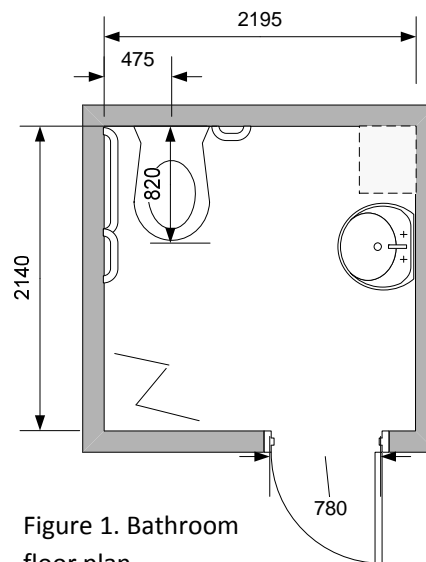


Figure 1. Bathroom floor plan

There is adequate space beside the toilet for a right hand transfer. The seat height is 450mm, centerline to nearest wall 475mm, and front of seat to rear wall 820mm. There is a rear grab rail of 300mm at 800mm from the floor. There is a side horizontal rail of 700mm length at 800mm height and an oblique rail of 700mm length reaching to height of 1120mm.

Also in the bathroom is a concertina screen. This may impact on circulation space.



Picture 7. Bathroom

## **5 Star Adventure Tours**

### **Emergency:**

The exit point to the shop is the main entry to the café and tour desk.

### **Other activities - Kayaking:**

All kayaking trips are done on flat water in the Alpine region. The kayaks used have a wide beam with dimensions of approximately 9ft long and 3ft wide and they are flat across the hull. The trips are led by experienced and qualified kayak instructors. The instructors have the ability to work through individual needs in order to modify or adapt an activity such as kayaking to allow participation at some level.