

Able Management Group

Norton House,
Great Alpine Road
Harrietville Vic 3741

Able Management Group (AMG) is a unique organisation in Australia. It is a not for profit, membership-based, charitable organisation that has been purpose built and grown to provide opportunities for people with disabilities to participate in winter and summer sporting and recreational programs. It does this through access to adaptive equipment, specialised training, and provision of off mountain accommodation.

The centre is located in Harrietville and offers a full sized house as shared lodge style accommodation. There are 5 bedrooms of varying size and capacity and 2 accessible bathrooms. There is a large shared kitchen, dining and lounge area, and ample outdoor area for camping, (including a tipi!). The centre also offers an accessible workshop area and a number of activities and links with local organisations that can accommodate people with differing access requirements.

Reservations:

Phone: 03 5759 2584
Email: coachdeano@hotmail.com
Web: www.ablemanagement.com.au/
TTY: n/a

Transport:

Transport to Bright is via private vehicle, private coach or V-Line coach. Travel from Bright to Harrietville is via private coach or vehicle only.

V-Line trains run to Albury or Wangaratta and there is V-line coach link up from Wangaratta to Bright, via Beechworth. The coach service uses an accessible vehicle. Contact V-Line 136 196 for information on availability and schedules.

Carparking

There is no designated car parking on site but there is ample space for cars or minibuses to park within 10 -15m of the house. Parking is on a firm gravel road. Once out of the vehicle move directly across the driveway to the house, veering to the right and meeting the front verandah. This is undercover with a short 100mm ramp of 10% gradient leading to a large level concreted area. Move along the front of the house approximately 8m to the entry door. There is ample circulation space.



Picture 1: Car park

Able Management Group

Entry

The front door opens inward with a right hand hinge, offers 760mm clearance and has a lever handle at 820mm high. The door is light to open with no self door closure. There is a short threshold of 5.6% gradient.



Picture 2: Path to entry



Picture 3: Entry

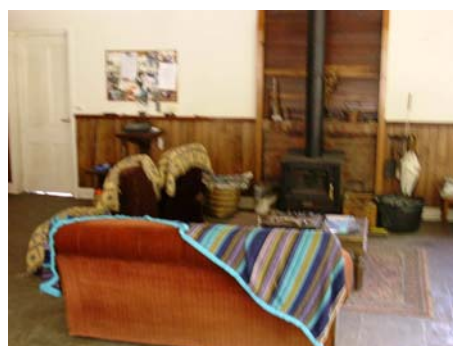
Living/dining area

Once inside the front door you enter a large (12m x 7.4m) open plan dining, kitchen and living area.

This area offers ample circulation space throughout and furniture could also easily be moved to suit individual needs. The main dining table is two long trestles joined together. There are bench style seats surrounding it that, again, could be moved to provide space. The table is 770mm high with 670mm underside clearance.

The living area has several couches of varying heights and shapes. Many have no arm rests and are around 450mm in height. There is a large TV/entertainment area with projector, screen and a large selection of DVDs. The remote controls for these are stored at seated level amongst the couches.

The kitchen is a long room with a large wooden bench which divides it from the dining area. This bench is 900mm high and on the dining area side offers 750mm knee clearance. On the kitchen side this underside is all cupboards. At the far end of the kitchen there is a bench area (where tea and coffee is all stored), that is 1000mm wide and has full underside clearance of 750mm.



Picture 4: Lounge area



Picture 5: Kitchen area



Picture 6: Dining table

Able Management Group

Bedrooms

From the shared kitchen/dining/living area enter a hallway almost directly opposite the original room entry. This hallway is 950mm wide and approximately 10m long and leads first to two bathrooms on either side of the hall. Further along the hallway on either side are two smaller bedrooms. Both of these bedrooms have cavity slide doors providing 800mm clearance with a D handle at 790 – 890mm high. The rooms are 3200 x 3400mm in size and offer 1 set of bunks and 1 single manual adjustable bed. There is 1200mm clearance between the beds and the single manual adjustable bed is approximately 600mm high and has approximately 150mm underside clearance. At the time of report this bed had another mattress stored below it. If space was required for hoist access then the manager would be able to remove the additional mattress.

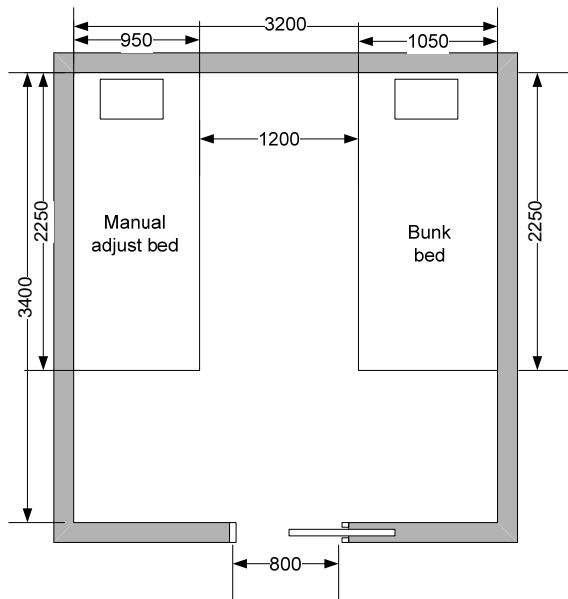


Figure 1: small bedroom



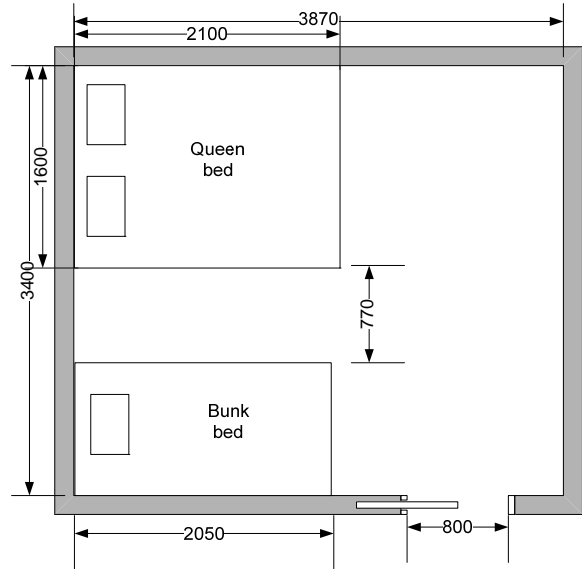
Picture 7: Small bedroom left side

Able Management Group

The next set of bedrooms (the last in the hallway) offer two configurations. They both have dimensions of 3870 x 3400mm and have cavity sliding doors providing 800mm door clearance and D door handles at 800 – 900mm height.

The room to the right has a queen size bed (1600 x 2100mm) that is 500mm high and has 270mm underside clearance. There is 1570mm clear at the foot of the queen bed, 770mm between beds and the bunk bed dimensions are 1050 x 2050mm.

Figure 3: Front bedroom right side



The room to the left houses a double bed that is 1400 x 2000mm, 500 high and with 80mm underside clearance. There is adequate circulation space next to the bed and furniture could be moved to create more space.

All mattresses are innerspring.

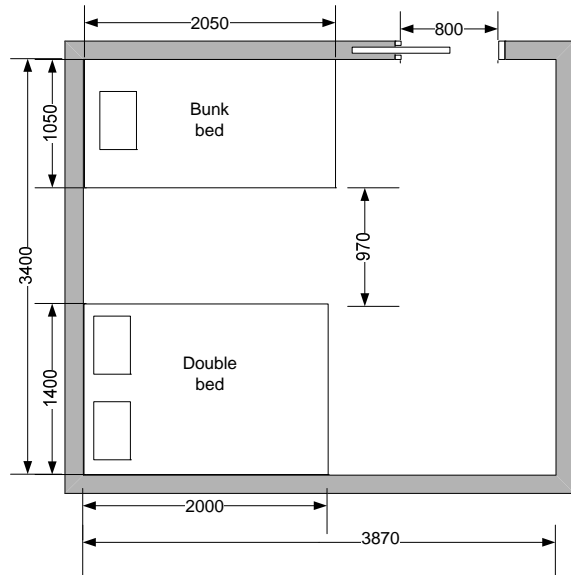


Figure 4: Front bedroom right side

Able Management Group

There is a 5th bedroom that is located separate to the main house. From the initial entry point to the living area of the house, path of travel is approximately 45° across the room to the right to another doorway. This door opens toward the outside, has 750mm clearance, a lever door handle at 970mm high and leads to a stone/concrete (slightly uneven) porch. Once outside, the entrance to the cottage is almost immediately on the right. The door is similar to that described above (790mm clearance and door handle at 1000mm high) and it opens into the cottage. There is a 100mm rise bridged by a short threshold ramp of approximately 300mm long. This room offers a queen size bed with adequate circulation space on either side and could provide at least 1500mm clear if furniture was rearranged. The bed is 500mm high and has 280mm underside clearance. There is a large light switch at 1000mm high next to the door and open hanging space of around 1350mm high. The cottage has floor boards throughout and one low pile rug is situated at the end of the bed.

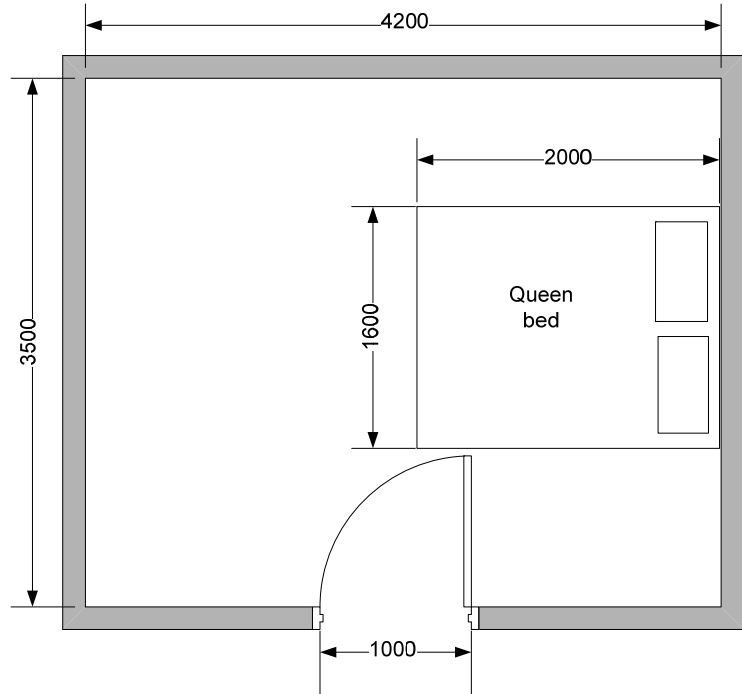


Figure 5: Cottage bedroom



Picture 8: Entrance Cottage bedroom



Picture 9: Cottage bed

Able Management Group

Bathrooms

Two accessible bathrooms are situated at the commencement of the hallway (from the living area). These are similar sized rooms but offer slightly different facilities and configurations to meet differing needs. The first bathroom on the right offers a door clearance of 760mm, the door opens inwards and the lever door handle is at 800mm high. There is a small threshold lip - where the wooden floorboards turn to tiles – of 50mm high. The room has dimensions of 1980 x 3260mm and offers an accessible shower area, toilet and wash basin. There is a mirror of 1020 x 2070mm high above the basin.

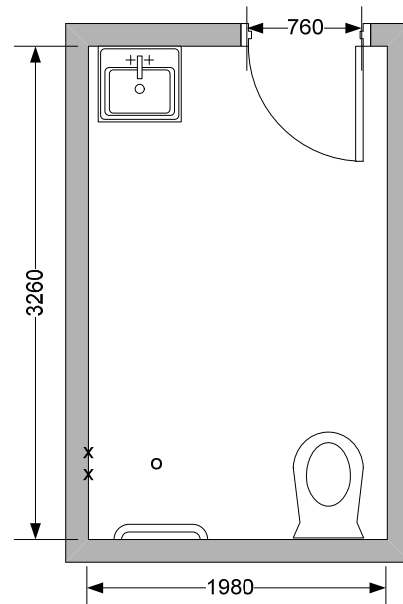


Figure 6: Right side bathroom



Picture 10: Right side bathroom

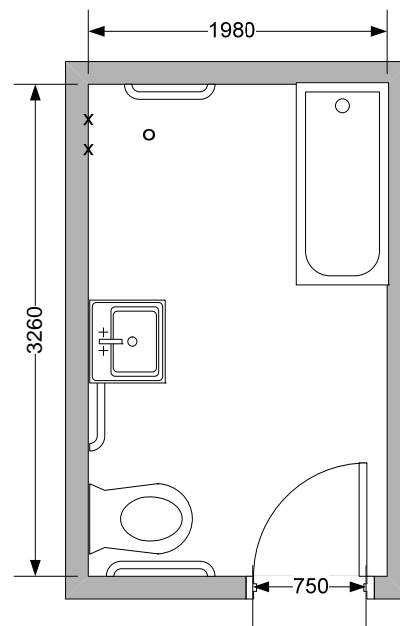


Picture 11: Right side bathroom

The basin is 800mm high, with 650mm underside clearance and 100mm knee space. The mixer tap is 150mm deep and 920mm high. The toilet is in the far left hand corner of the room and there is ample circulation space for a right hand transfer. The seat height is 440mm, centreline to wall 400mm and front of seat to rear 720mm. There is a horizontal grab rail to the side of the toilet of 850mm high, 650mm long, then rising at an oblique 440mm to 1120mm high. The shower wet area offers ample circulation space and surrounded by a curtain track. 'Star' style taps are 1000mm high and there is a hand held shower hose. A 600mm, 920mm high horizontal grab rail is on the back wall, and a vertical rail 800 – 1200mm high on the side wall. There is a free standing shower seat available for use and the room can be heated by an IXL Tastic light/heater.

Able Management Group

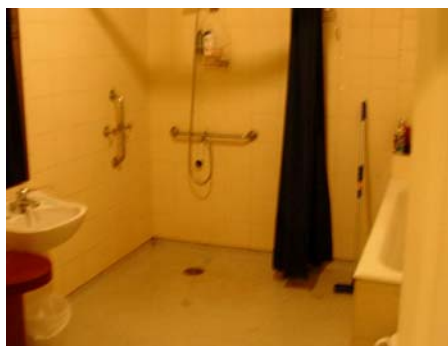
The second bathroom (off the hallway to the left) has similar doorway dimensions (750mm clearance) but also offers a short threshold ramp of approximately 200mm long at the entrance. This room offers a bath as well as wash basin, shower and toilet. Mirror height is 830 – 1910mm. Washbasin is 740mm high, 550mm underside clearance and 200mm depth clearance. Lever mixer tap is 200mm deep and 860mm high. The shower offers adequate circulation space and is free from hobs or tracks. There is a vertical rail 450 – 780mm next to the taps on the side wall and a 600mm long horizontal rail on the back wall positioned 930mm off the floor with a hand held shower hose.



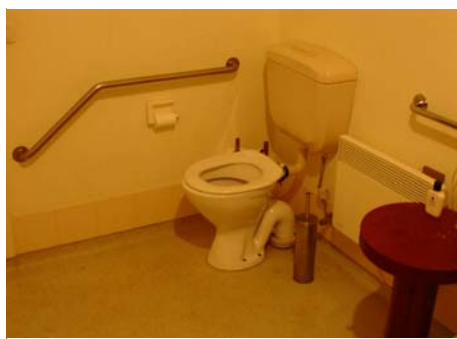
Picture 13: Left side bathroom



Picture 14: Bath Left B/R



Picture 15: Shower Left B/R



Picture 16: Toilet Left B/R

The toilet offers a right hand transfer but partially obstructed by the position of the wash basin (see diagram). Between the toilet and basin is a 300mm long horizontal rail 900mm off the floor. Seat height is 450mm, centerline to wall 375mm and front of seat to rear 700mm. A 700mm long horizontal rail is on the side wall at 850mm high, it then descends on an oblique 400mm to 580mm high.

Able Management Group

Other facilities

In addition to the fixed furniture of the bathrooms, AMG has some equipment available for use such as a shower chair and mobile shower commode. Item descriptions are listed below, for further detail contact AMG:

- Adjustable height shower chair with arm rests.
- Mobile shower commode with bucket, transit wheels, basic padded seat.
- Mobile shower commode with high back, gutter arm rests, full padded seat and transit wheels.
- Mobile battery operated hoist with basic sling and 127kg lifting capacity.
- There is also ample space to store personal equipment.

AMG is set on a large block of land with the Ovens River at it's rear. There are no formal activity sessions but assistance can be provided on an individual basis and at the users own risk. Visitors to the camp would be best to look at the website for ideas and information regarding possible activities and then to discuss these options with the manager. For example a popular activity is the off road buggy. The pictures show the frame and seat set up but for further detail, it is advised to discuss with manager. There are several tracks around the property that lead to the work shop, tipi, river and bbq area. These tracks are mostly loose gravel with grassy sections. The area is largely level with changes in gradient of approximately 3-7% . The only area of significantly steep gradient is closer to the river. A basic concrete path of around 800mm wide runs down to the waters edge and has a gradient up to 17% and is approximately 5m long. Over summer the river is shallow in sections and there are large lilos and foam mattresses that could be used to help enter the river.



Pictures 17 & 18: Off road buggy



Picture 19: Rear of property to river