

Riverdeck Cafe

119 Gavan St
Bright 3741
Victoria

The Riverside Cafe is adjacent to the Bright Visitor's Centre. It is open 7 days a week, 8.30am to 4.30/5pm. It offers a breakfast and lunch menu, kids menu and is licensed. There is outdoor and indoor seating. Accessible entry is through the Visitor's Centre.

Reservations:

Phone: (03) 5755 2199

Transport:

Transport to Bright is via private vehicle, private coach or V-Line coach. V-Line trains run to Albury or Wangaratta and there is V-line coach link up from Wangaratta to Bright, via Beechworth. The coach service uses an accessible vehicle. Contact V-Line 136 196 for information on availability and schedules.

Parking:

There are no designated accessible parking spaces, however there is a 10min drop off zone on the adjacent road (5m from Bright Visitor's Centre entrance), and an unsealed car park across the road with plenty of spaces. The coach set down area is in the same area. There is adequate circulation space to unload wheelchairs. The path of travel to the entrance is clear and accessible from the 10min zone. There is a drop gutter with a 9% gradient, The path is paved and free of hazards. The path slopes upwards 6.9% to the front door for 4.5m. There are no steps. From the car park, a road needs to be negotiated.



Picture 1. Entry to café via visitors centre

Entry and Counter:

There are double doors at the entrance of the Visitor's Centre, with one door being chocked open during summer. The door width is 790mm (with one door open). It has a D handle (820mm-1040mm high) and is outward opening. It is of medium weight. There is a foyer (approximately 1580mm wide, 3m long) before negotiating the same door set up again. Once in the Visitor's Centre the path of travel is straight ahead, past the information desk to your right and approximately 7m through to the Café entrance. Doors are left permanently open during opening hours and are approximately 800mm wide. The service counter is on the right hand side and is 900mm high, with no knee space. Signage is clear and lighting is good.



Picture 2. Café service area

Dining Room:

There is good circulation space in the indoor dining area, with approximately 800mm clearance between tables. Furniture can be moved if required. Tables are 750mm high with a knee clearance of 700mm.

The accessible outdoor area is limited to a deck approximately 1800mm wide. The door to the outside area is at the centre of the glassed wall that faces the river. It is 800mm wide, is inward opening, and self closes. It had a D handle, 800mm-1030mm in height. It is of medium weight. The minimum clearance between tables outside is 800mm. There is also 800mm between the tables and verandah posts. The outside tables are of pedestal design, 700mm high with 670mm clearance.

The menu is written in large writing on the wall above the counter.



Pictures 3 & 4. Table layout and doorway to outside area

Bathroom and Toilet:

There is an accessible toilet adjacent to the outdoor deck area. The key is with the Cafe Staff. The door to the outside area is 800mm wide, is inward opening, and self closes. It has a D handle, 800mm-1030mm in height. It is of medium weight. The path of travel to the toilet is to turn right once outside and travel along the deck for approximately 5 metres with minimum clearance past furniture 800mm. The decking opens up in front of toilet entries offering adequate circulation space. The accessible toilet is on the right and is unisex.



Picture 5. Path of travel to accessible toilet

The door into the bathroom is 780mm wide. It is outward opening, of medium weight, and does not self-close. The outside handle is a D handle approximately 980mm high. There is good circulation space in the bathroom area, and the floor surface is concrete.

The mirror is 1100mm - 1870mm high.

The wash basin is accessible. It is 880mm high and 430mm deep, with a knee clearance of 700mm high and 200mm deep. The Capstan lever taps are 950mm high.

The toilet is a left hand transfer and is 460mm high. Centre line from the side of the toilet to the nearest object is 520mm and front of seat to rear is 740mm. There is a rear and side grab rail, both 790mm high. The side grab rail has an 800mm long horizontal section, then 700mm oblique section.

There is also a male and female stall toilet available.

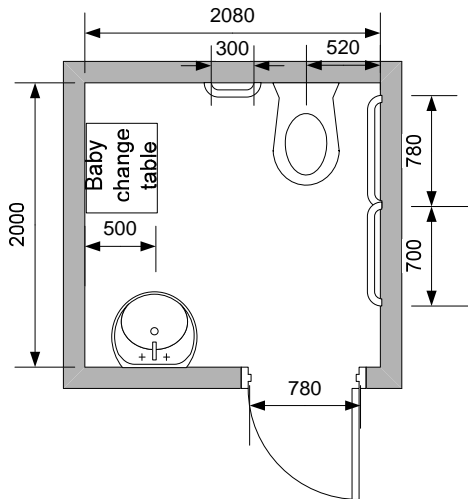


Figure 1. Accessible toilet floor plan



Picture 6. Accessible toilet