

The Alpine Hotel (The Alpine)

7-9 Anderson Street
Bright Victoria 3741

The Alpine Hotel is situated in the centre of Bright town ship next to the main roundabout. It has a family bistro, main bar and pizzeria, a beer garden, bottle shop and motel rooms. There are several accessible entrances and there is one accessible bathroom situated near the bistro area.

The motel rooms were not assessed as no features met any accessibility requirements. There is a small step at entry to all rooms, they offer minimal circulation space, furniture cannot be moved due to limited space and the doorway leading to shower and toilet is under 600mm wide.

Reservations:

Phone: 03 5755 1366
Email: thealpinehotel@bigpond.com.au
TTY: n/a

Transport:

Transport to Bright is via private vehicle, private coach or V-Line coach. V-Line trains run to Albury or Wangaratta and there is V-line coach link up from Wangaratta to Bright, via Beechworth. The coach service uses an accessible vehicle. Contact V-Line 136 196 for information on availability and schedules.

Parking:

There is no designated parking within close vicinity of the Alpine Hotel. The closest public designated parking is two road crossings away near public toilets. From a safety point of view it would be advisable to park on the hotel grounds if possible, (enter from Anderson St).

Entry:

There are several methods of entry to the Alpine Hotel. Two entries exist on Anderson St at the main roundabout in Bright. Both offer level entry via double doors.

The concrete path around the perimeter of the pub is mostly level with a minimal crossfall away from the building.

Bistro entry - The first entry reached when traveling Anderson St from Alpine Way leads to the bistro area. It is a double door with single door clearance of 620mm. To allow double door clearance of 1100mm the latch at the top of the door must be released. The door has a pull d handle of 1110 – 1175mm in height and is medium in weight with a



Picture 1: Bistro entry

The Alpine Hotel (The Alpine)

self door closure. Immediately beyond the door is a door mat with approximately 30mm lip.

Bar entry - Whilst there are four options for entering the main bar only two offer level access. The second entry reached when traveling Anderson St from Alpine Way, leads to the main bar and pizzeria. There are double doors with single door opening of 550mm and full opening of 1100mm. The door pushes inward and the internal d handle is at 1130 -1230mm high. This door leads to the motel reception area. As the doors are inward opening, fully enter the room, allow the door/s

to close before turning to the right and pushing again through a second door to the bar area. This door offers 820mm clearance, is a medium weight to push and the D handle for exiting is 1130 -1230mm high. Beer garden entry - The other accessible entry is via the rear beer garden. From Barrack St an open gate leads to a ramp 6m long with a gradient of 12%. The path is 1400mm wide at its narrowest. The beer garden is open and level. Entry to the main bar is via a single opening door with 810mm clearance and push d handle at 1000 – 1300mm high.

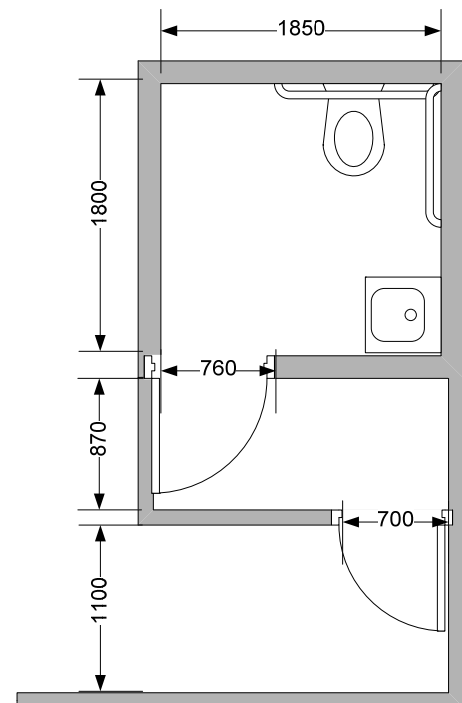


Picture 2: Beer garden entry

Bathroom:

There is one accessible toilet on site and is located at the rear of the bistro. Follow signs to the amenities and travel down a 1100mm wide hallway for 6 m before turning to enter a door on the left. This is a heavy pull door with 700mm clearance and d handle height 1100 – 1250mm. There is a 20mm threshold as the carpet turns to tiles. Turn 45 degrees in the airlock and the accessible toilet is signed ahead. This door pulls open, is 760mm clear and has a d-handle of 950 – 1100mm height. It is light with a self door closure.

Figure 1: Accessible bathroom



The Alpine Hotel (The Alpine)

Inside the bathroom there is clear circulation of approximately 1100 x 1100mm. There is a mirror over the basin at 800 – 1500mm high, and a baby change table that folds length ways into the room and is 900mm high. The basin is 790mm high with 650mm underside clearance and 200mm knee depth. There are two capstan taps at 410mm deep and 840mm high.

The toilet is in the opposite corner to the door and offers a left hand transfer. The seat height is 400mm, centerline to nearest object 580mm and 670mm from front of seat to rear. There is ample space beside the toilet for transfers.

There is a continuous grab rail at 800mm high along the rear (1050mm long) and side wall (600mm long) with a 300mm long oblique portion at the end reaching to 1000mm.



Picture 3: Basin



Picture 4: Toilet

Other facilities:

The bistro area offers family meals throughout the day and has a separate bar area. There are both bench tables (730 high, 690 clear and 280mm deep) and square pedestal table 710 high and 670mm clear. The floor has low pile carpet throughout and mostly offers adequate clearance between tables. The food service area is 900mm high and no knee clearance. The menu is written on a blackboard and a 12 font typed menu also available.



Picture 5: Bistro



Picture 6: Bistro food counter

The Alpine Hotel (The Alpine)

There is a small outdoor eating area to the left of the main entry. The doorway and path is 780mm clear and the door is light, outward opening and has a self closure. There is a short ramp of 1000mm at 7% gradient. Tables outside are all pedestal of 730mm high and 700mm underside clearance. There is minimal circulation space between tables. Door handle height to reenter the bistro is approximately 1100mm.



Picture 7: Bistro outdoor area



Picture 8: Pizza counter

The main bar is an open plan area offering bar seating, several bench style tables, a pizzeria and a beer garden. Tables (in beer garden and inside) are approximately 860mm high, 820mm underside clear and 240mm deep. There is a clear space next to the pizzeria counter where service would be accessible. This area is tiled where as the rest of the main bar is low pile carpet. Outside is paved.

Emergency:

There are lit exit signs throughout the venue. Auditory alarms also exist.