

## **Bright Visitors Centre**

119 Gavan St  
Bright 3741  
Victoria  
Phone: 03) 5755 2275 /1300551117  
Email: [info@brightescapes.com.au](mailto:info@brightescapes.com.au)  
Web: <http://www.brightescapes.com.au/visitbright.asp>

The Bright Visitors Centre is found in the centre of town. Services on offer include: information on local attractions/activities/accommodation, Internet, gift shop, rail/v-line bookings, and car hire. The Riverdeck Cafe is adjacent to the building.

### **Transport:**

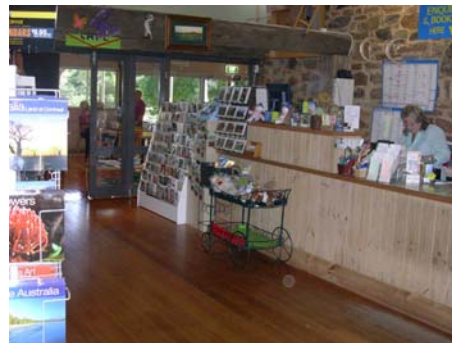
Transport to Bright is via private vehicle, private coach or V-Line coach. V-Line trains run to Albury or Wangaratta and there is V-line coach link up from Wangaratta to Bright, via Beechworth. The coach service uses an accessible vehicle. Contact V-Line 136 196 for information on availability and schedules.

### **Parking:**

There are no designated accessible parking spaces, however there is a 10min drop off zone on the adjacent road (5m from Centre's entrance), and an unsealed car park across the road with plenty of spaces. This area includes the coach set down area. There is adequate circulation space to unload wheelchairs. The path of travel to the entrance from the 10min drop off zone is clear and accessible. There is a drop gutter with a 9% gradient, and the path is paved and free of hazards. The path slopes upwards 6.9% to the front door for 4.5m. There are no steps. From the car park, a road needs to be negotiated.

### **Reception Entry and Counter;**

There are double doors at the entrance, with one door being chocked open during summer. The door width is 790mm (with one door open). It has a D handle (820mm-1040mm high) and is outward opening. It is of medium weight. There is a short walkway (approximately 1580mm wide, 3m long) before negotiating the same door set up again. There is adequate circulation space in the Centre and the floor surface is wheelchair friendly (bricks to floorboards). The counter is 990mm high, with no knee space. Signage is good, along with lighting. The Information section is in a separate room, of which there is a 900mm doorway to go through. Brochure height varies from 700mm-1800mm. Floor surface is floorboards.



Pictures 1 & 2. Entry and reception counter

**Bathroom and Toilet:**

There is an accessible toilet adjacent to Riverdeck Cafe. The key is with the Cafe staff. The door to the outside area is 800mm wide, is inward opening, and self closes. It had a D handle, 800mm-1030mm in height. It is of medium weight. The path to the toilet is along the deck, which is 1830mm wide. The bathroom is unisex. The door into the bathroom is 780mm wide. It is outward opening, of medium weight, and does not self-close. The outside handle is a D handle, approximately 1000mm high. There is good circulation space in the bathroom area, and the floor surface is concrete.



Picture 3. Path of travel to accessible toilet

The mirror is 1100mm-1870mm high. The washbasin is accessible. It is 880mm high and 430mm deep, with a knee clearance of 700mm high and 200mm deep. The Capstan lever taps are 950mm high. The toilet is a left hand transfer and is 460mm high. Centerline from the side of the toilet to the nearest object is 520mm and front of seat to rear is 740mm. There is a rear and side grab rail, both 790mm high. The side grab rail has an 800mm long horizontal section, then 700mm oblique section. There is also a male and female stall toilet available. The toilet is only available during the opening hours of the Cafe, which is 7 days a week, 8.30am-4.30/5pm.

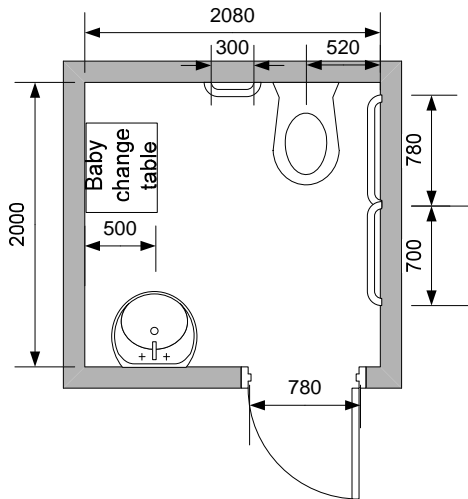


Figure 1. Floor plan of accessible toilet



Picture 4. Accessible toilet