

Alpine Discovery Centre

31 Bogong High Plains Rd Mount Beauty VIC 3699

The Alpine Discovery Centre is situated in Mount Beauty and provides tourism advice and information for visitors to the area. It offers an accommodation and tours booking system, pamphlet display and environmental information. It has an accessible public toilet. It also has a viewing tower but this is not wheelchair accessible.

Reservations:

Phone: 03 57541962 or 1800 111 885
Fax: 03 57541767
Email: enquiry@alpineshire.vic.gov.au
Web: www.visitalpinevictoria.com.au
TTY: n/a

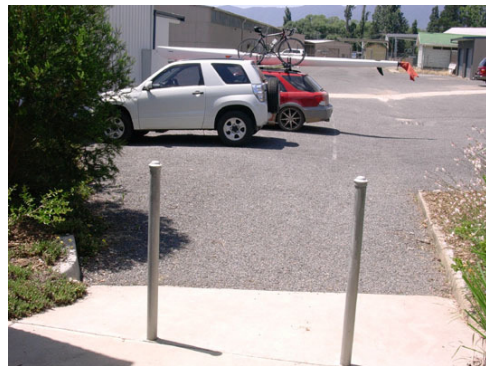
Transport:

Transport is available via private vehicle or Falls Creek Coaches which run services to Albury Airport. At present no coaches have wheelchair facilities but are due to be available in February 2008. For more details see www.pyles.com.au

Parking:

There is currently no designated parking. At the time of writing, the carpark was being resurfaced and signed. It is planned that a designated accessible carparking space will be available in the future.

Picture 1. Parking area



Entry:

There are two entries to the building, both via ramped walkways. Parking to the south east of the building the path of travel is across gravel surface to a concrete ramp. The ramp continues for 1700mm at 12.7% gradient to two bollards and a level area 3000mm², turning to the right the ramp continues for another 7000mm at 4.9% gradient then level to the door. The ramp width is approximately 2000mm. There are double doors and single door width is 770mm, inward opening, self door closure and hook handle at 830 – 1060mm high.

Picture 2. South east entry



Parking to the north east of the building the path of travel is across the gravel car park to a concrete ramp and brick wall. The concrete ramp continues for 4800mm at a gradient of 8% and then becomes wooden slats for a further 6000mm at a gradient of 7.3%. This wooden section also has a handrail. Right hand side ascending is 930mm high. Left hand side ascending is 850mm. The ramp width is a minimum of 2100mm. There is a large landing

Alpine Discovery Centre

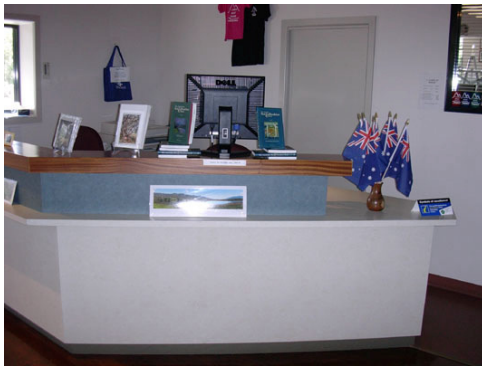
area directly in front of the door way with ample circulation space. There are double doors with a single opening of 770mm clear. The door is outward opening, the hook D handle is 830 – 1060mm high and it has a self door closure.

Picture 3. North east entry



Reception:

There are two counters. At the northern entry where the cash register is located the counter is mostly 1220mm and the end portion is 900mm high. There is knee depth clearance of 230mm. The eastern entry counter is 700mm high with knee depth clearance of 250mm.



Picture 4 & 5. Information Counters

Bathroom:

The accessible bathroom is situated to the right of the information counter. The wooden floor turns to lino and there is a 10mm threshold lip at the join. The hallway turns to the left and entry to the accessible toilet is on the left hand side. Whilst the hallway is 1150mm wide, entry to it is limited by display stands leaving 760mm clear. The toilet entry is via a cavity sliding door with clearance of 790mm. The handle is recessed and approximately 900mm high. There is adequate circulation and the flooring is lino. There is a mirror 840 – 1840mm high and the light switch is at 1100mm. The washbasin is 800mm high, 380mm deep, and 600mm knee clearance. The tap is a single lever mixer at height of 940mm. The toilet has clearance for a right hand transfer. The seat height is 460mm, centerline to nearest object 460mm and front of seat to rear 820mm. There is a side grab rail with horizontal portion 750mm at 800mm high. The oblique portion is also 750mm long. The rear grab rail is 300mm long at 800mm from floor.

Picture 6. Path of travel to accessible toilet

Picture 7. Accessible toilet

