

Buttercup Cottage

271 Buttercup Road
Merrijig VIC 3723

Buttercup Cottage is a self contained unit that sleeps 4, with 1 double and 2 single beds, located in a rural setting. The unit is quite spacious with good clearances and circulation space. Accessibility has been well provided for throughout the building with the bathroom, shower and toilet facilities in particular provide very good accessibility.



Picture 1. Buttercup Cottage

Reservations:

Phone: 03 5777 5591
Fax: 03 5777 5905
Email: buttercup@mansfield.net.au
Web: www.buttercup.com.au
TTY: n/a

Transport:

Transport is available via private car. There is a bus service to Mansfield. Buttercup Cottage is approximately 15km from Mansfield. There is a local taxi service.

Parking:

Parking is available at either reception or next to the cottage, however reception is not accessible. Reception is at the owners' house. There is a gravel parking area with a path (including two platform steps) to the front door of reception.



Picture 2. Parking

The owners are happy to meet guests at the cottage to complete check-in and assist with baggage if needed. Please call ahead to make arrangements. There is mobile phone reception at Buttercup Cottage.

The carport at the cottage is concrete, although a little narrow at 3m wide. There are plans to widen this area. At present vehicle exit on one side is onto a slightly uneven gravel surface while the other exits onto concrete adjacent to the ramp.



Picture 3. Entrance

Buttercup Cottage

Accommodation

Entry:

From the carport there is a 3.3 metre long ramp (at 6.1%) to a wide veranda. The threshold has a 25mm lip. Inside is a flat polished floorboard surface. The doorway is 825mm wide. There is an outward opening fly screen door with D handles. The main door is not heavy, inward opening and has hooked lever handles 1000mm high.

Kitchen/ Dining/ Lounge Area

The living area is quite spacious and uncluttered with good circulation space between furniture. It has a lounge area at one end and a kitchen at the other. The floors are polished floor boards. All switches are of the big button type and are at around 1100mm high and are easily reached. There is a remote control for the TV which is 800mm high and for the heating/airconditioning unit. There is a wall mounted phone at 1000mm high.

The seat height of the lounge chairs is 490mm. The dining table is a standard four legged table 800mm high with knee clearance of 680mm and seats four.

The kitchen benches are at 960mm high. The microwave is under the bench at 700mm high. There is an under-bench electric stove and bench top hotplates with the first hot plate being 100 mm from the front. There is a dishwasher at floor level.

The sink tap is 485mm back from the front of the bench and 100mm higher than the bench.



Picture 4. Kitchen/Dining



Picture 5. Lounge Area

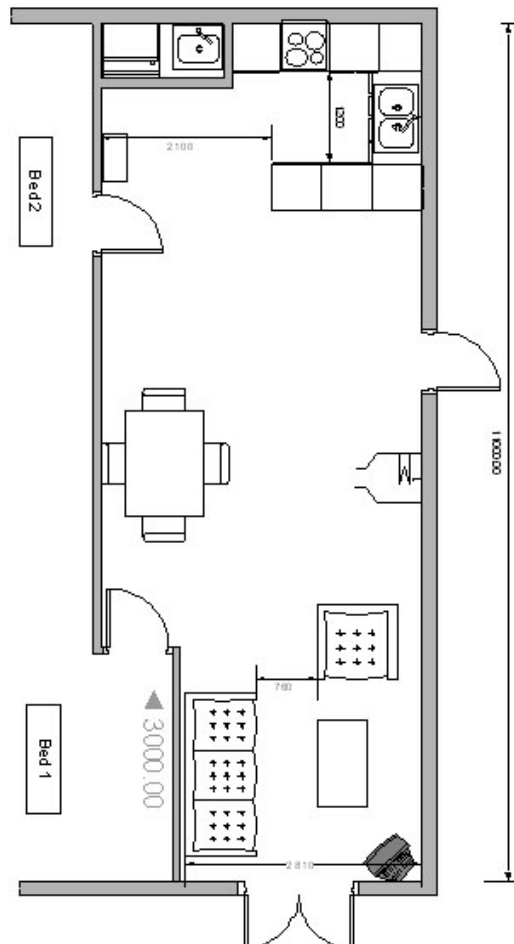


Figure 1. Kitchen/Dining/Lounge Area

Buttercup Cottage

Emergency:

In addition to the front door there is an exit door opening through a flat threshold onto the veranda at the west end of the living area which could provide an alternative exit in an emergency.

Exit from the site would be via the driveway and there is another gated exit from the property on the northern boundary next to the house.